

Intentionally Designing Health and Well-Being in Virginia:

How Virginia is working toward becoming the
Healthiest State in the Nation

Marissa J. Levine, MD, MPH, FAAFP
State Health Commissioner
The Virginia Department of Health



Goal:

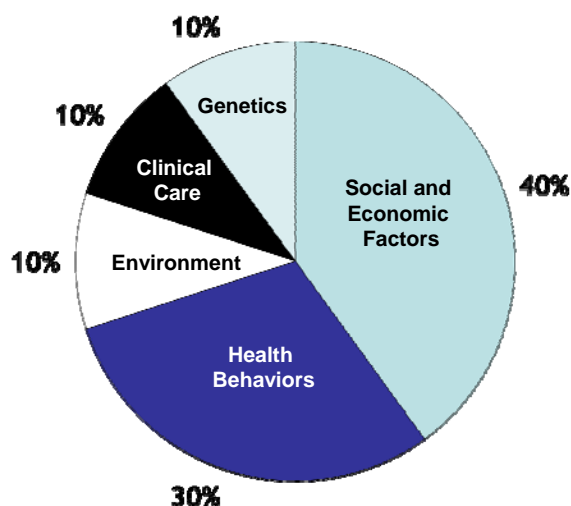
Describe the leadership
necessary to advance the
public's health now and in
the coming decades



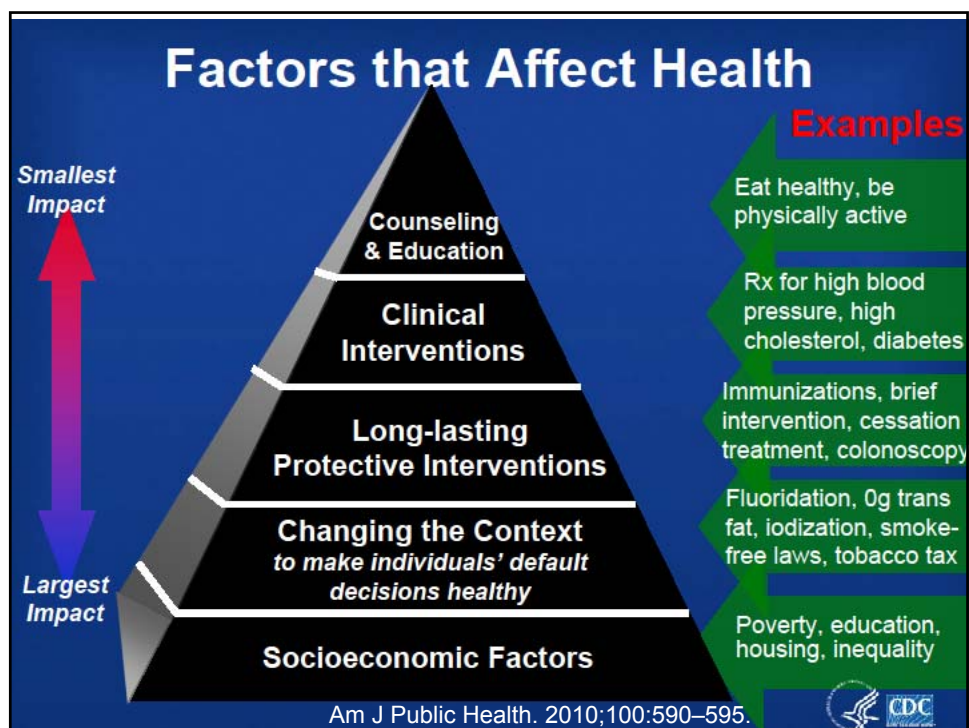
Objectives

- Review factors that affect health and well-being
- Describe Virginia's health status
- Outline an Approach to Population Health Improvement with a focus on necessary leadership
- Identify the Virginia State Health Improvement Plan Framework ([*Virginia Plan for Well-Being*](#))
- Discuss opportunities for intentional and aligned improvements in health and well-being

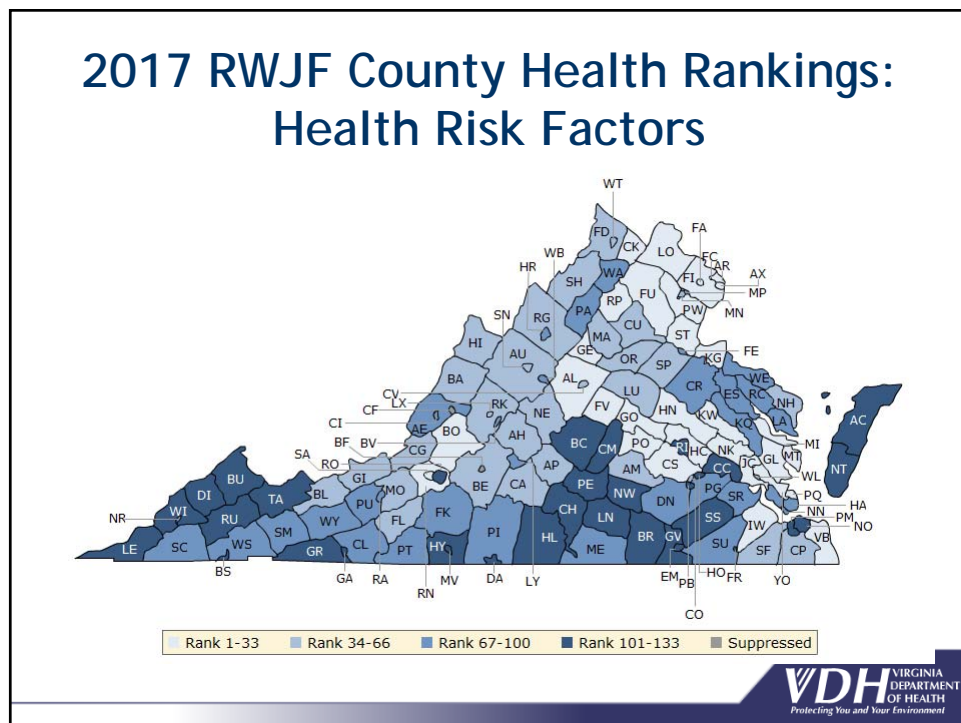
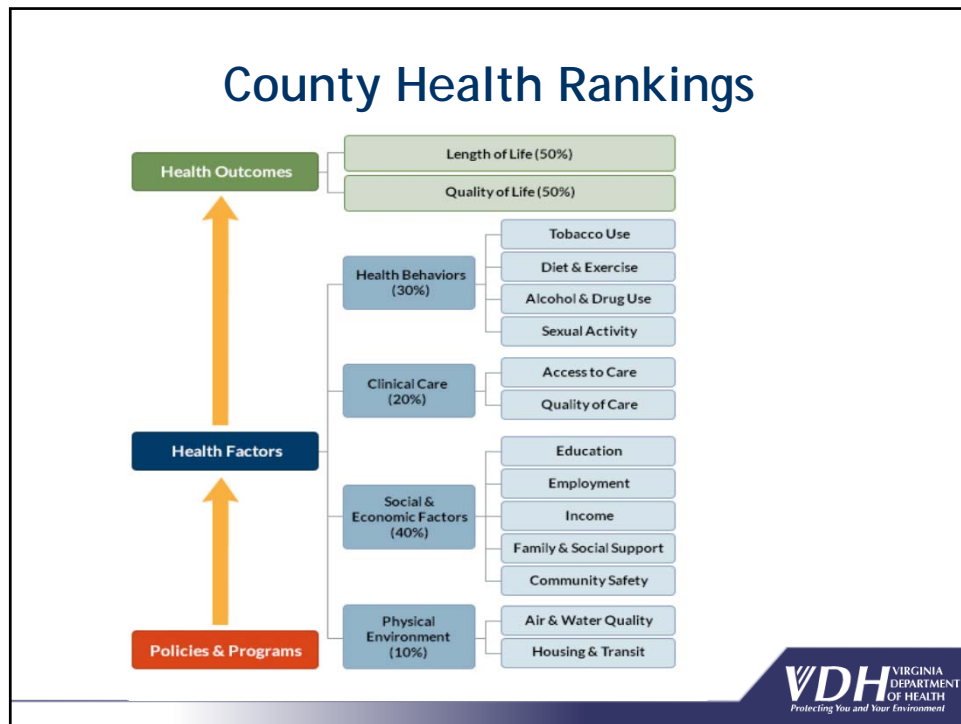
Relative Contribution of Factors that Affect Health



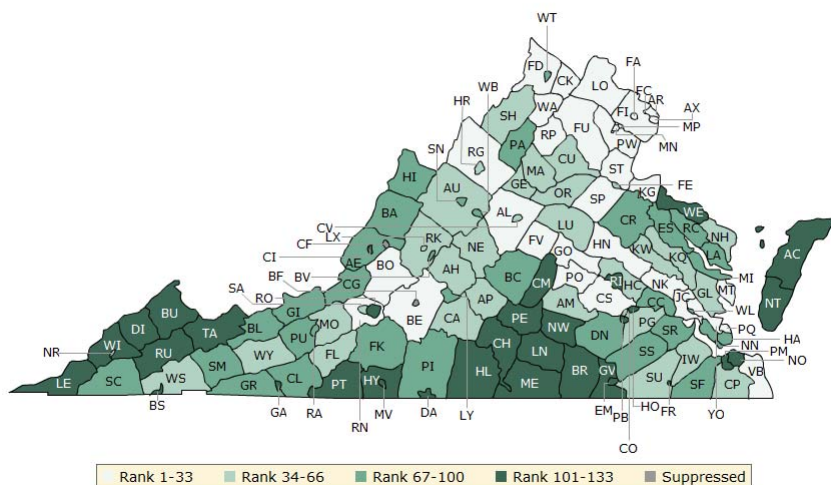
Source: McGinnis et al., *The Case for More active Policy Attention to Health Promotion*, *Health Affairs*, 21, no. 2 (2002): 78-93



The Case for Actionable Data

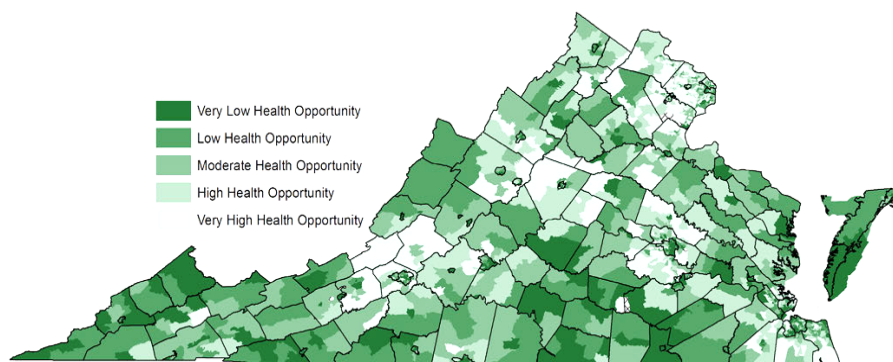


2017 RWJF County Health Rankings: Health Outcomes



VDH VIRGINIA
DEPARTMENT
OF HEALTH
Protecting You and Your Environment

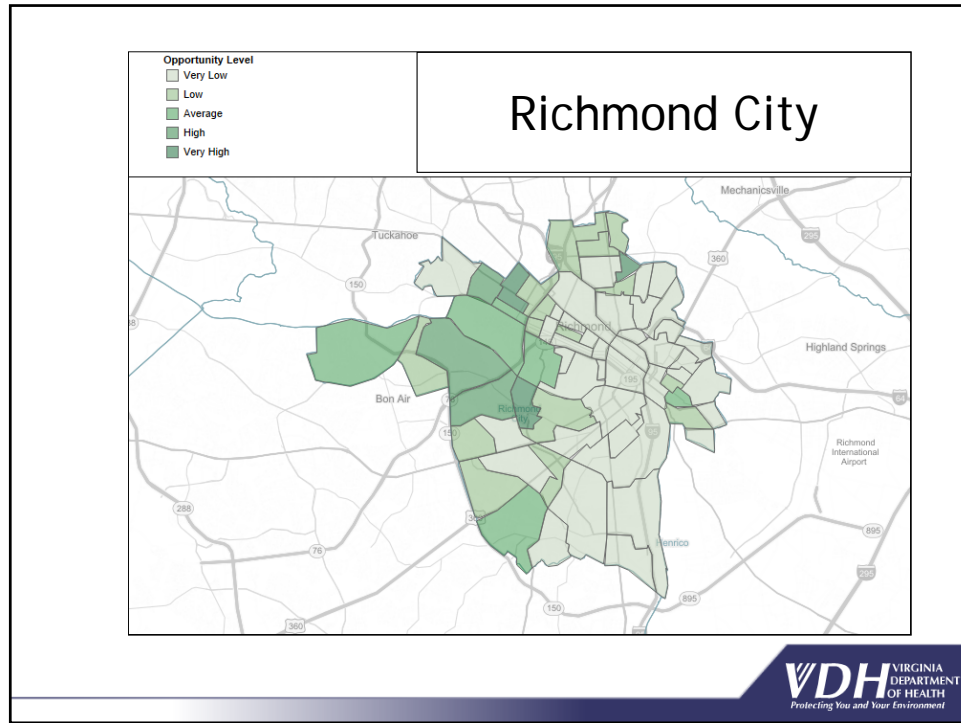
Virginia Health Opportunity Index



**A composite measure comprised of 13 indices that reflect a
broad array of social determinants of health**

Air Quality • Population Density • Population Churning • Walkability • Affordability • Education • Food Access • Material Deprivation • Employment • Income Inequality • Job Participation • Segregation • Access to Health Care

<https://www.vdh.virginia.gov/omhhe/hoi/>



Virginia Youth Well-Being Index

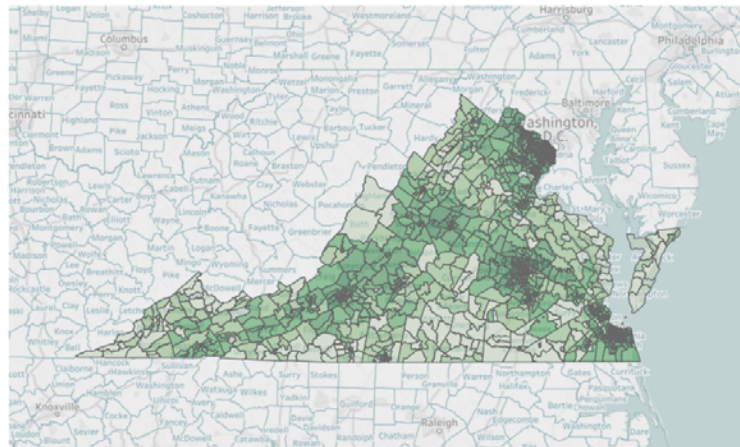
- Indices & Indicators**
- ☒ Youth Well Being Index
 - ☐ Education Index
 - ☐ Crime Indicator
 - ☐ Family Stability Indicator
 - ☐ Housing Indicator
 - ☐ Population Density Indicator
 - ☐ Poverty Indicator
 - ☐ Pre-K Enrollment Indicator
 - ☐ Primary Care Access Indicator
 - ☐ Psychiatrist Access Indicator

- Local Health District**
- ☒ Null
 - ☐ Alexandria
 - ☐ Alleghany
 - ☐ Arlington
 - ☐ Central Shenandoah
 - ☐ Central Virginia
 - ☐ Chesapeake
 - ☐ Chesterfield
 - ☐ Chickominy
 - ☐ Crater
 - ☐ Cumberland Plateau
 - ☐ Danville
 - ☐ Eastern Shore
 - ☐ Fairfax
 - ☐ Hampton
 - ☐ Henrico
 - ☐ Loudoun
 - ☐ Loudoun
 - ☐ Mount Rogers
 - ☐ New River
 - ☐ Norfolk

- Opportunity Level**
- ☒ Very High
 - ☐ High
 - ☐ Average
 - ☐ Low
 - ☐ Very Low

VDH VIRGINIA
DEPARTMENT
OF HEALTH
Promoting & Protecting the Health of All Virginians
www.vdh.virginia.gov

Office of Health Equity
Health equity for all Virginians



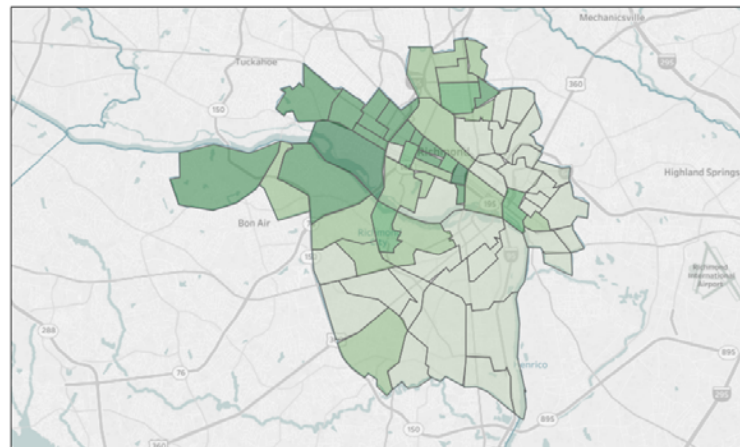
- Indices & Indicators**
- ☒ Youth Well Being Index
 - ☐ Education Index
 - ☐ Crime Indicator
 - ☐ Family Stability Indicator
 - ☐ Housing Indicator
 - ☐ Population Density Indicator
 - ☐ Poverty Indicator
 - ☐ Pre-K Enrollment Indicator
 - ☐ Primary Care Access Indicator
 - ☐ Psychiatrist Access Indicator

- Local Health District**
- ☐ Null
 - ☐ Alexandria
 - ☐ Alleghany
 - ☐ Arlington
 - ☐ Central Shenandoah
 - ☐ Central Virginia
 - ☐ Chesapeake
 - ☐ Chesterfield
 - ☐ Chickominy
 - ☐ Crater
 - ☐ Cumberland Plateau
 - ☐ Danville
 - ☐ Eastern Shore
 - ☐ Fairfax
 - ☐ Hampton
 - ☐ Henrico
 - ☐ Loudoun
 - ☐ Loudoun
 - ☐ Mount Rogers
 - ☐ New River
 - ☐ Norfolk

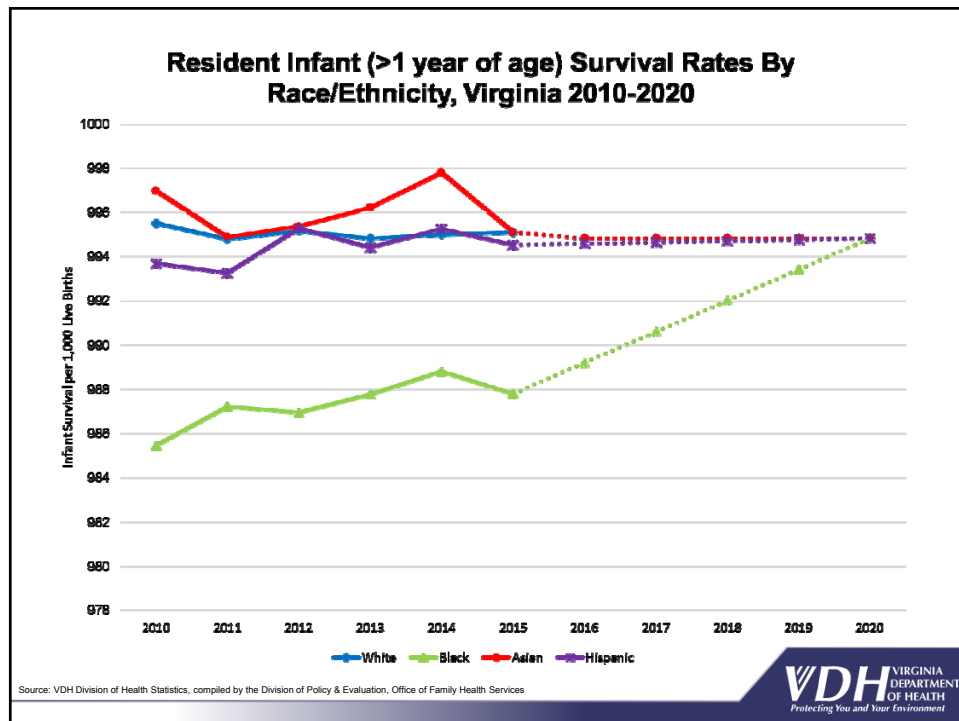
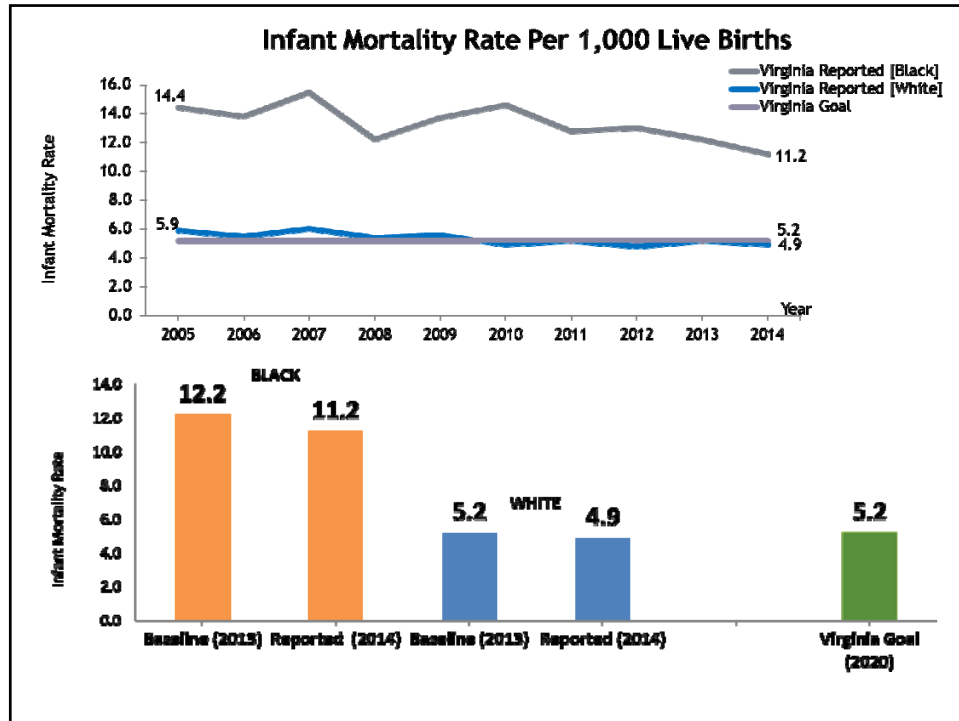
- Opportunity Level**
- ☒ Very High
 - ☐ High
 - ☐ Average
 - ☐ Low
 - ☐ Very Low

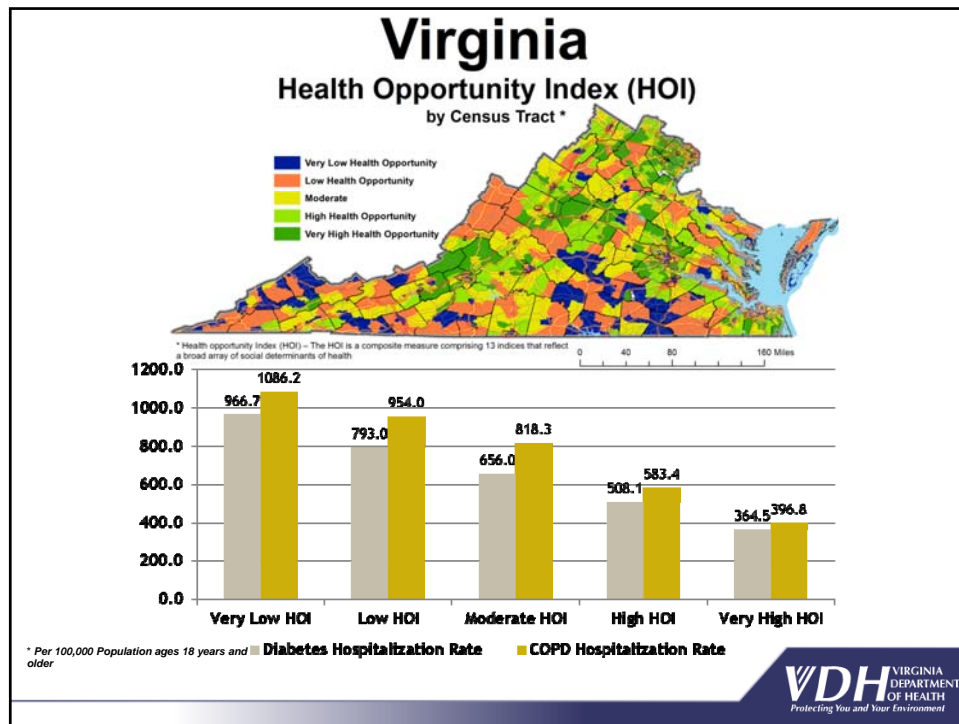
VDH VIRGINIA
DEPARTMENT
OF HEALTH
Promoting & Protecting the Health of All Virginians
www.vdh.virginia.gov

Office of Health Equity
Health equity for all Virginians



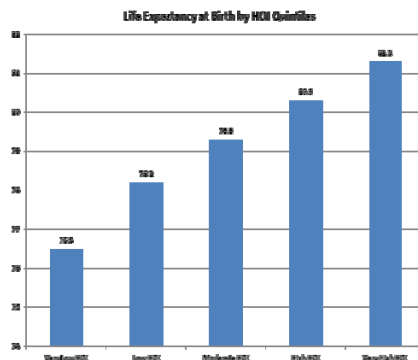
VDH VIRGINIA
DEPARTMENT
OF HEALTH
Protecting You and Your Environment



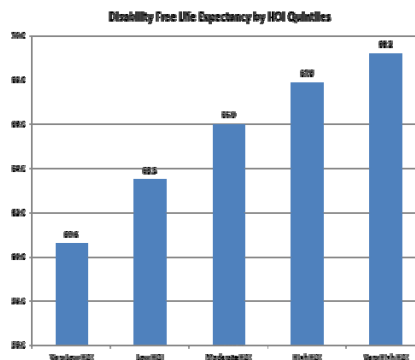


Monotonicity of HOI

Life Expectancy at Birth

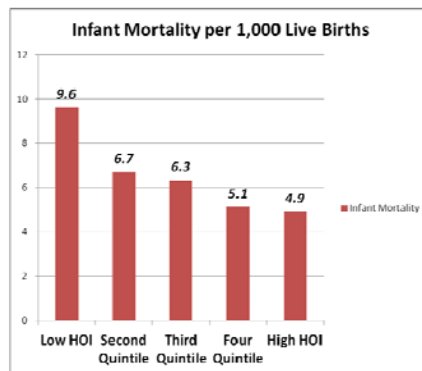


Disability Free Life Expectancy

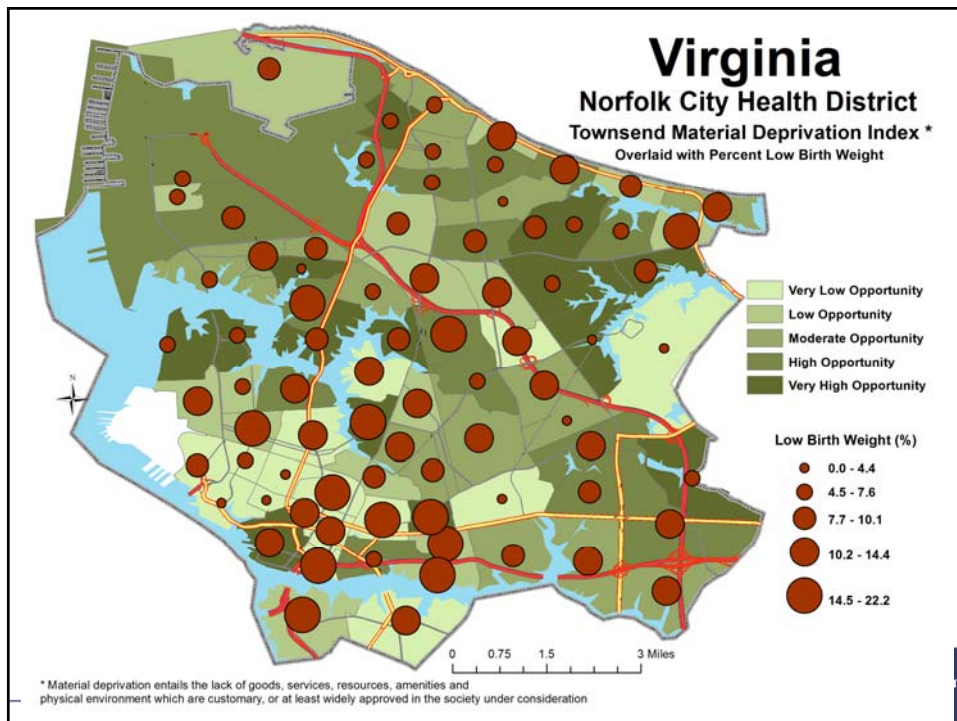
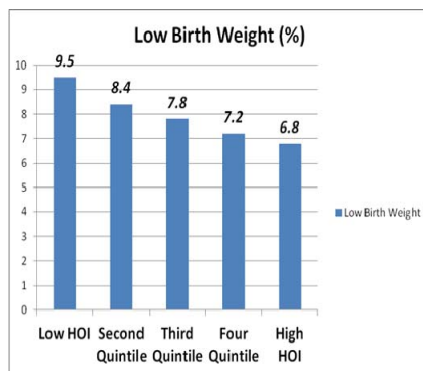


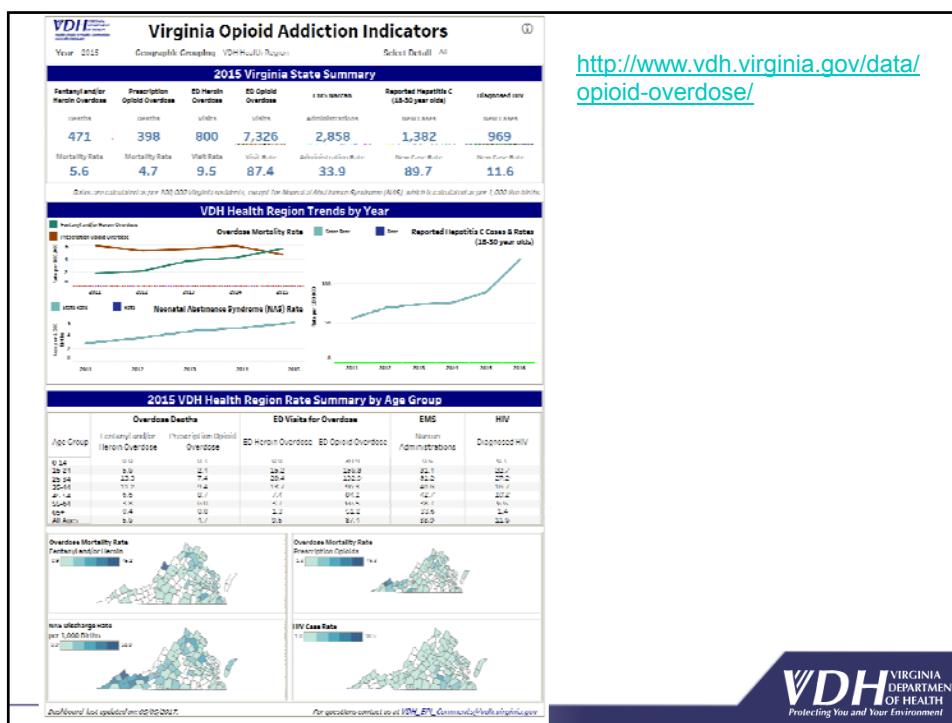
Monotonicity of HOI

Infant Mortality



Low Birth Weight





Creating the Conditions for
Intentional and Aligned Focus on
Health and Well-Being

Patients With Undiagnosed Hypertension: *Hiding in Plain Sight*

JAMA November 19, 2014 Volume 312, No 19

Key Components for Success*

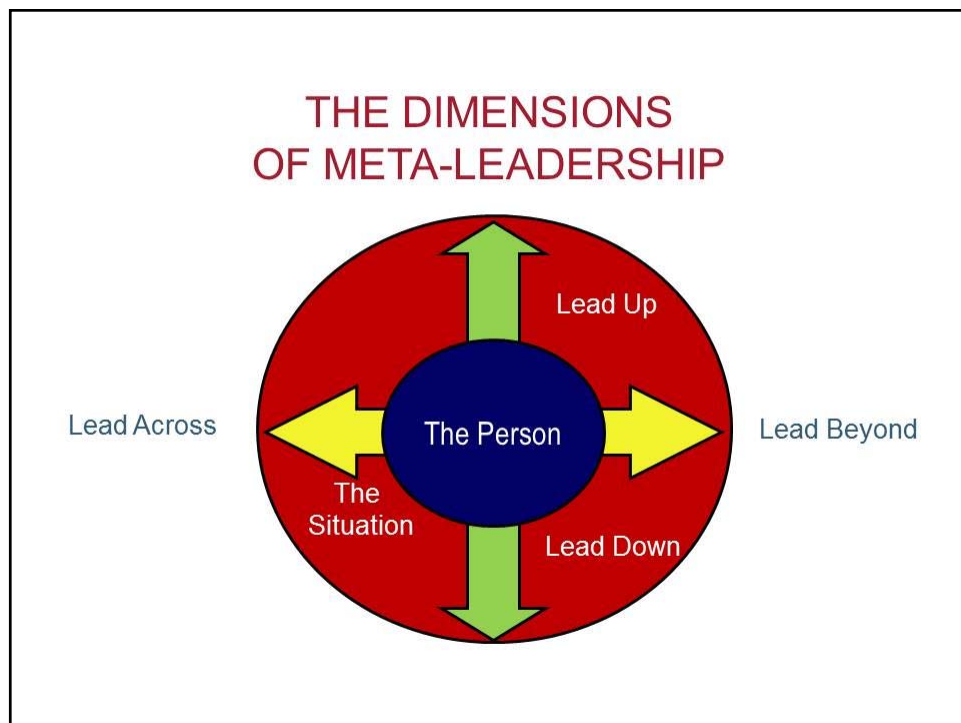
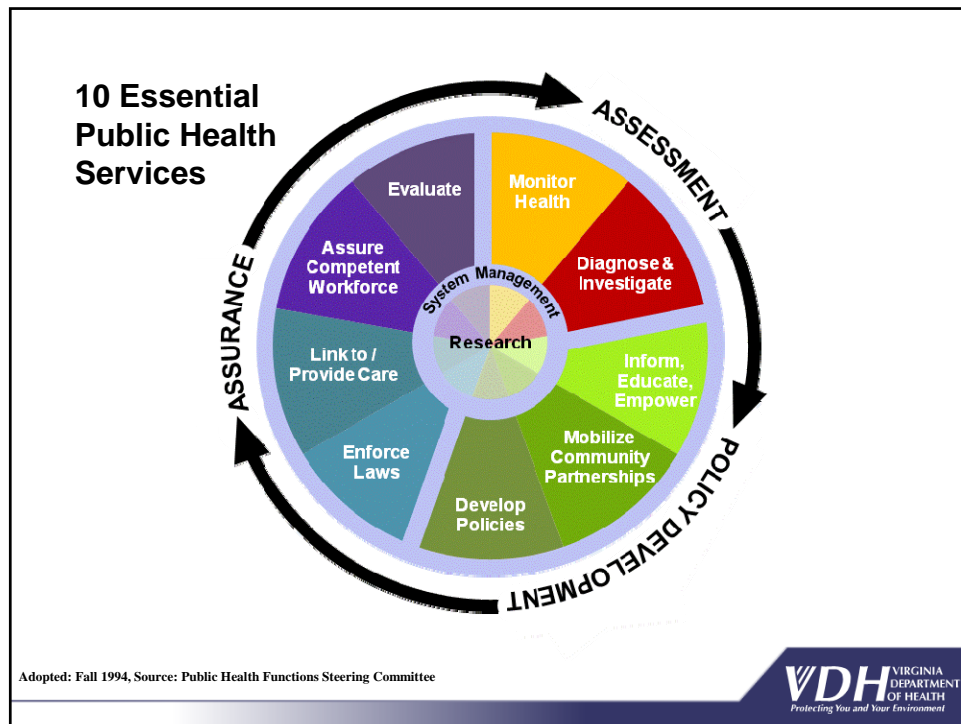
Cross-Sector Collaboration Drives Population Health Improvement

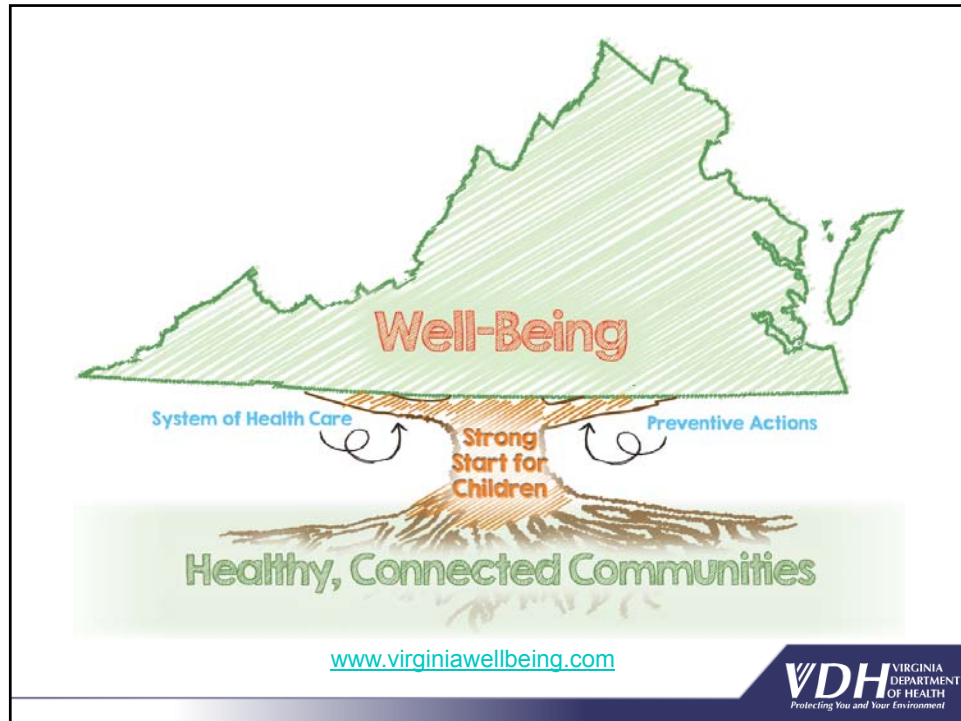
Shared Measurement and Joint Accountability

Five Prerequisites:

- Shared Understanding
- Goal Alignment
- Leadership Support
- External Stakeholder Engagement
- Clear Decision-making process among policymakers

*Hargunani, D. RWJF Issue Brief Jan 12, 2017







Summary and Thank You

References

Virginia's Plan for Well-Being

- <http://virginiawellbeing.com/>

Virginia Health Opportunity Index

- <https://www.vdh.virginia.gov/omhhe/hoi/>

Health in All Policies - NCSL

- <http://www.ncsl.org/research/environment-and-natural-resources/health-in-all-policies.aspx>



References (continued)

Meta-Leadership: A Primer

- https://cdn2.sph.harvard.edu/wp-content/uploads/sites/8/2013/04/meta-leadership_primer.pdf

Self- Healing Communities:

- <https://www.rwjf.org/content/dam/farm/reports/reports/2016/rwjf430225>

Public Health 3.0

- "Public Health 3.0: Time for an Upgrade." AJPH, 106(4), pp. 621-622
- <https://www.healthypeople.gov/sites/default/files/Public-Health-3.0-White-Paper.pdf>

