



Community Development: Public Health Policy and practice

Robert Ogilvie, PhD

Public Health Law & Policy

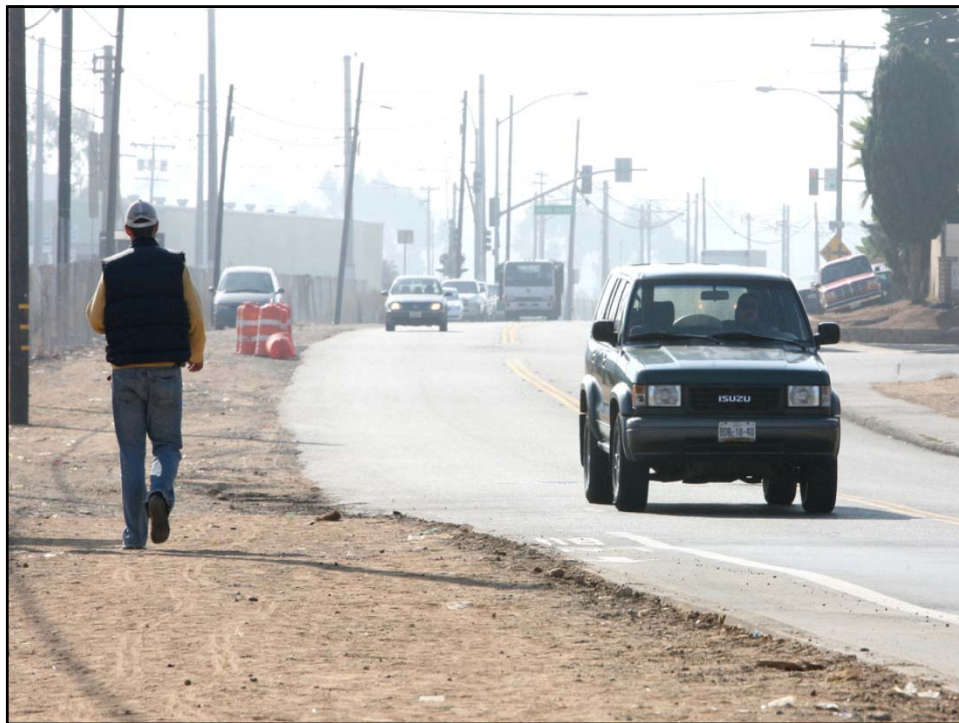
We partner with state and local leaders to improve health in all communities, especially the underserved.

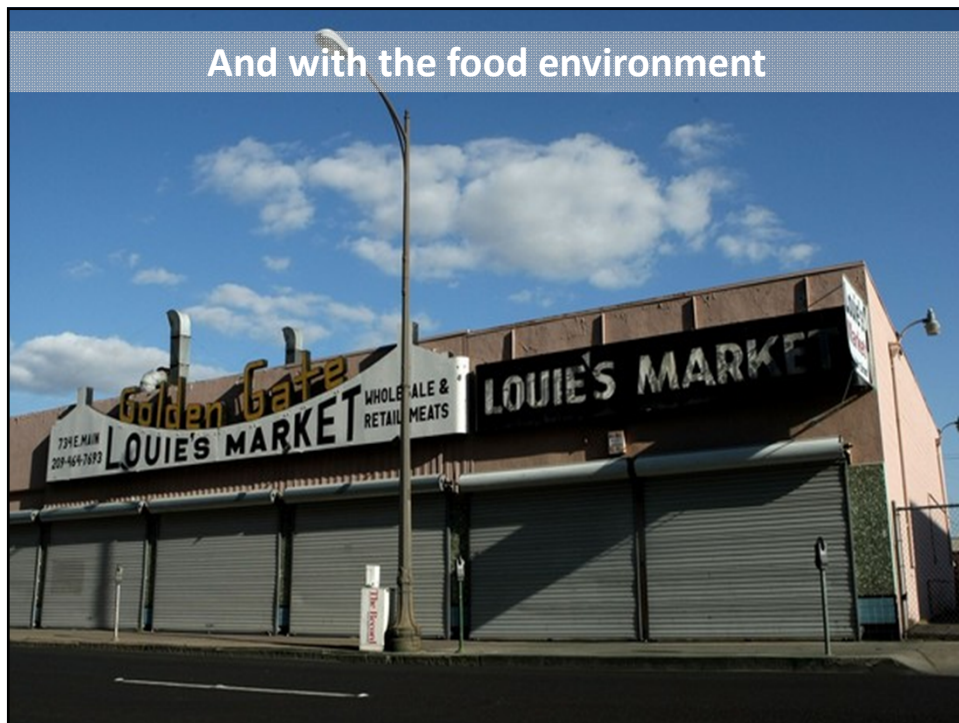
We do this by researching legal and policy questions, drafting policy language, and training community leaders to put these ideas to work.

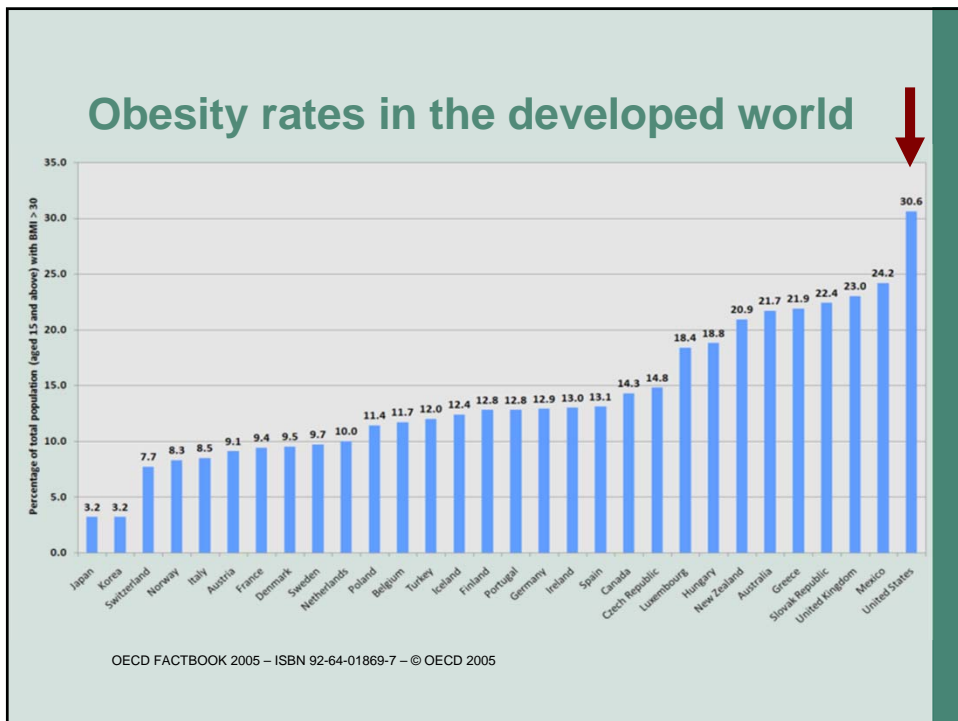


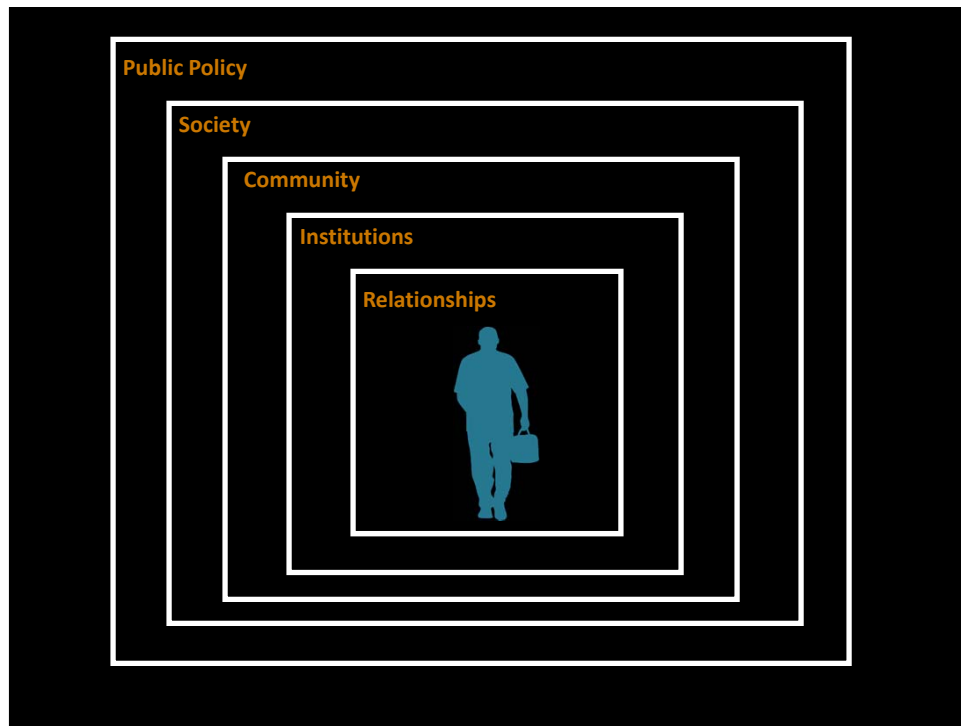
Then . . .





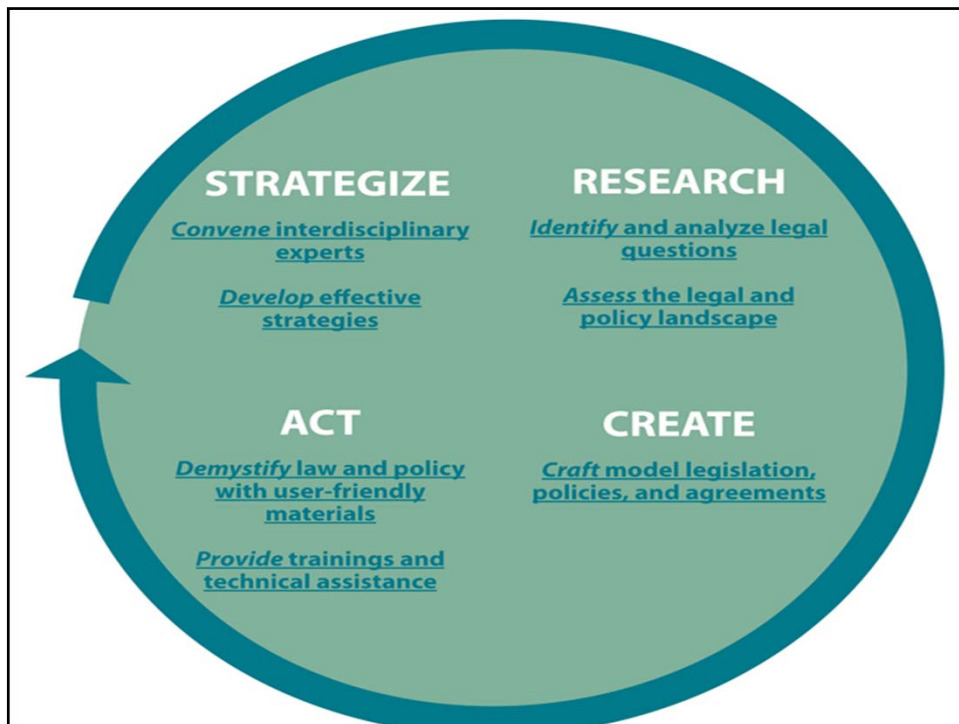


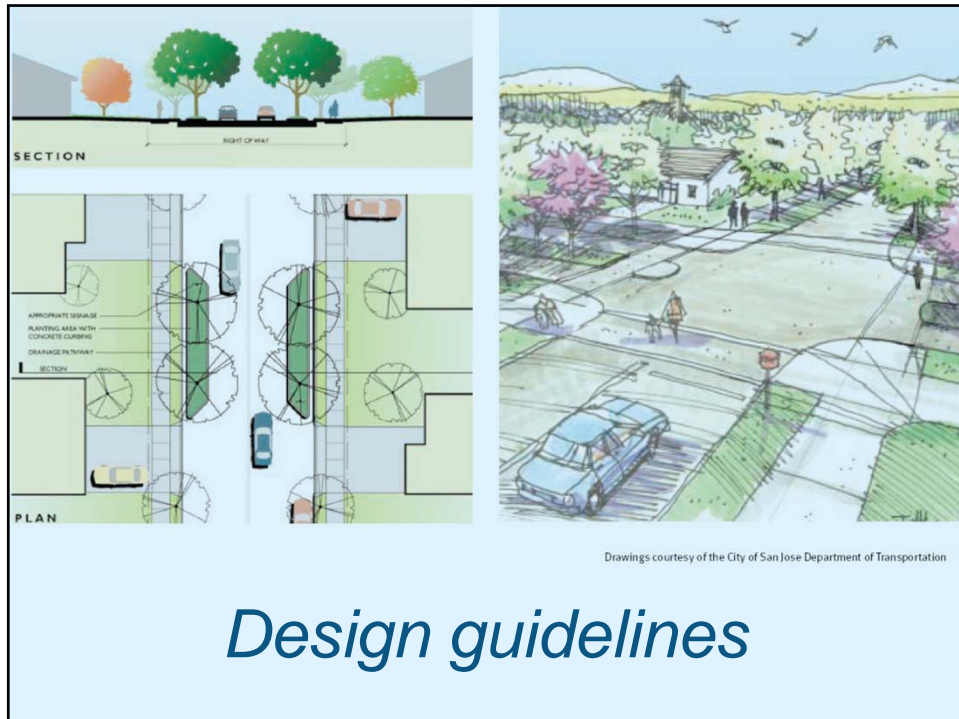




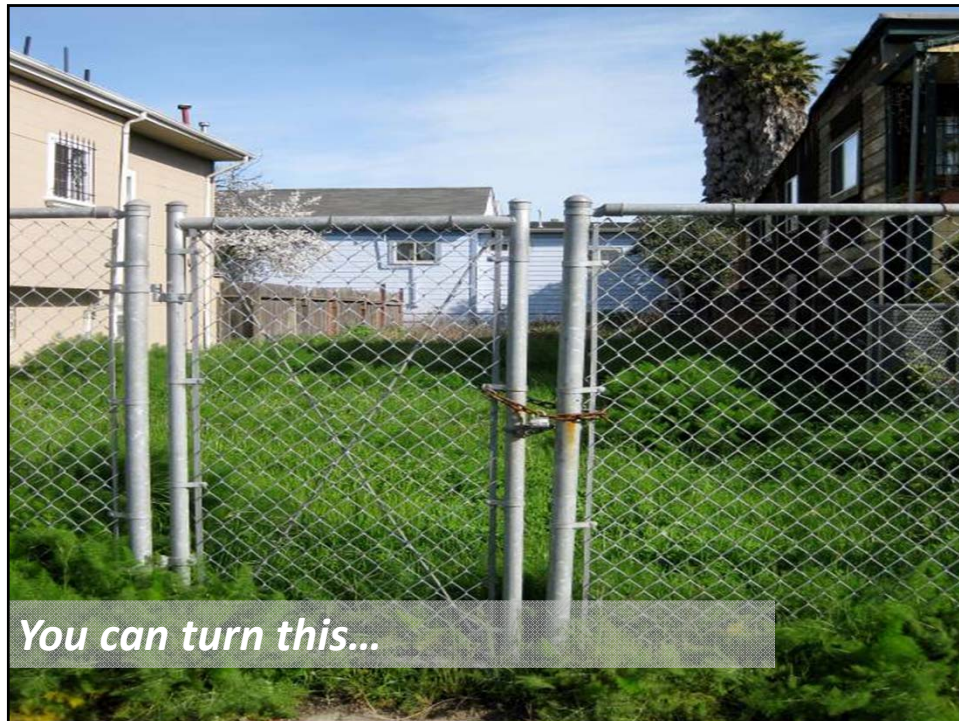
Policy decisions that affect health

- How can we increase access to healthy food?
- What should that new **road** look like?
- Should the **school yard** be closed in the evening and on the weekends?
- Should we **develop** on greenfields or should we infill?
- How can we pay for changes to our built environment?









Redevelopment (Mississippi, Nevada, California)
Urban Renewal (Colorado, Texas)
Community Renewal (Oregon)
Slum Clearance (Arizona)



Or you can replace this ...



Vith this



You can replace this ...





Public Processes

State laws require public participation

in planning processes



CONSIDER potential motivators

Tax revenue
Job creation
Quality of life
Business development
Blight removal




Mobilize & share data

Health data
Consumer spending
Competition
Leakage
Unmet demand



Elements of a strong obesity prevention policy

- 
1. It is a policy, not a program.
 2. It is legally feasible.
 3. It is financially feasible.
 4. Its implementation is clear and feasible.
 5. It accounts for disparities.
 6. It is data and context driven.
 7. It changes the conversation.
 8. It is part of a bigger plan.

Disclaimer

The information provided in this seminar is for informational purposes only, and does not constitute legal advice. Public Health Law & Policy does not enter into attorney-client relationships.

The primary purpose of this training is to address legal and/or policy options to improve public health. There is no intent to reflect a view on specific legislation. PHLP incorporates objective non-partisan analysis, study, and research in all our work.

<http://www.phlpnet.org/healthy-planning>

