

# Florida Perinatal Quality Collaborative



Partnering to Improve Health Care Quality  
for Mothers and Babies

## FPQC Perinatal Indicator System

**Hospital Code: Example**

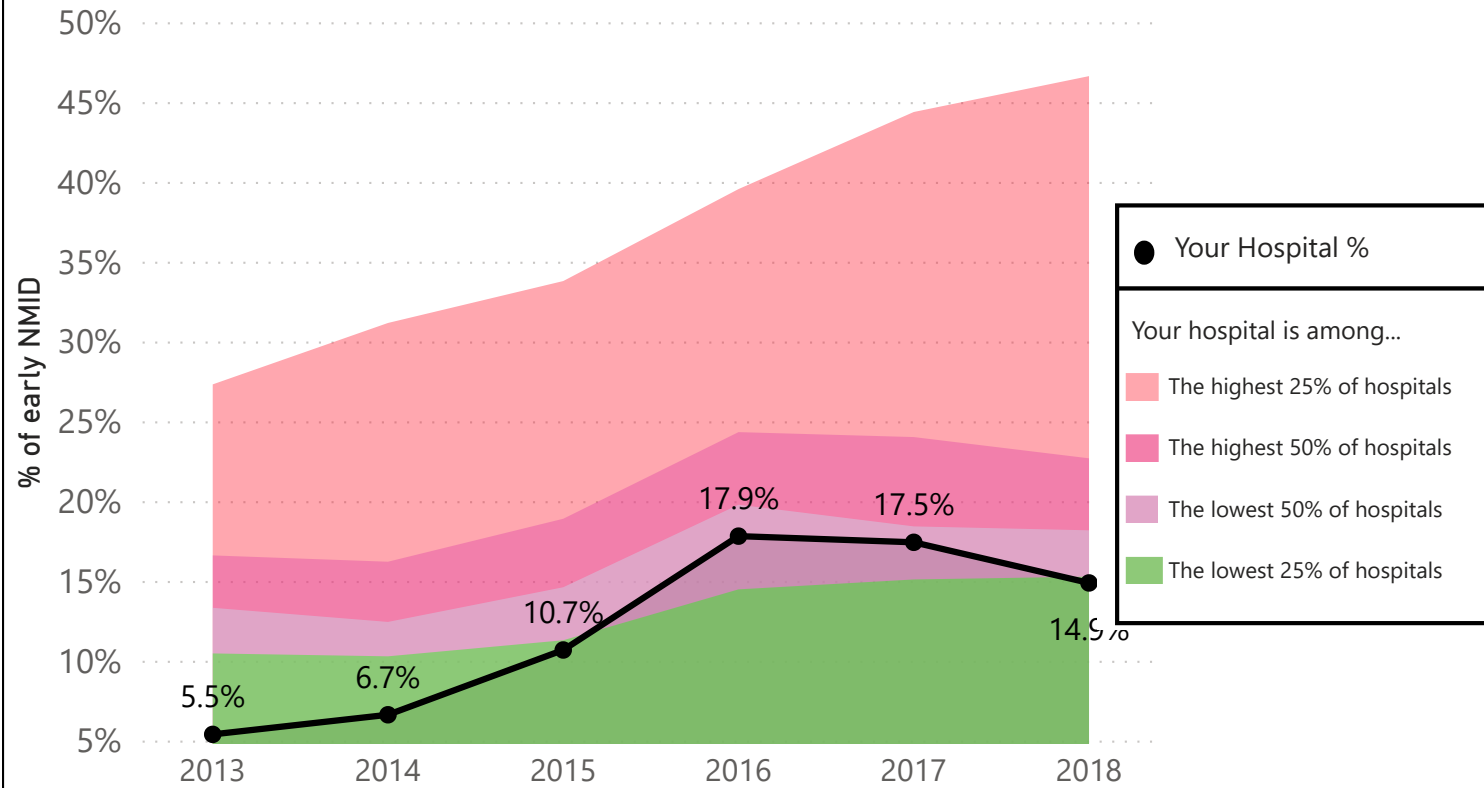
# A. Table of Contents

A. Non-medically Indicated (Elective) Early-term Deliveries	P#
Percentage of Non-medically Indicated Early-term Deliveries	4
Percentage of Early-term Deliveries (Hospital Specific)	4
Percentage of Non-Medically Indicated Early-term Deliveries by Delivery Type	5
B1. Low-Risk Cesarean Deliveries - QUARTERLY	
Percentage of Cesarean Deliveries Among All NTSV Births	6
Percentage of Inductions Among All NTSV Births	7
Percentage of Cesarean Deliveries Among All NTSV Inductions	7
B2. Low-Risk Cesarean Deliveries - YEARLY	
Percentage of Cesarean Deliveries Among All NTSV Births	8
Percentage of Inductions Among All NTSV Births	9
Percentage of Cesarean Deliveries Among All NTSV Inductions	9
C. Induction of Labor and Failed Inductions of Labor	
% Non-Medically Indicated Induction of Labor Among Singleton, Vertex Births at 39-40 Weeks of Gestation in Multiparous Women	10
% Cesarean Deliveries Among Singleton, Vertex, Non-Medically Indicated Inductions at 39-40 Weeks of Gestation in Multiparous Women	10
% Non-Medically Indicated Induction of Labor Among Singleton, Vertex Births at 39-40 Weeks of Gestation in Nulliparous Women	11
% Cesarean Deliveries Among Singleton, Vertex, Non-Medically Indicated Inductions at 39-40 Weeks of Gestation in Nulliparous Women	11
D. Antenatal Corticosteroid	
Percentage of Antenatal Corticosteroid Use Among Infants Born at 23-33 Weeks of Gestation	12
Percentage of Antenatal Corticosteroid Use Among Infants Born at 24-31 Weeks of Gestation	12

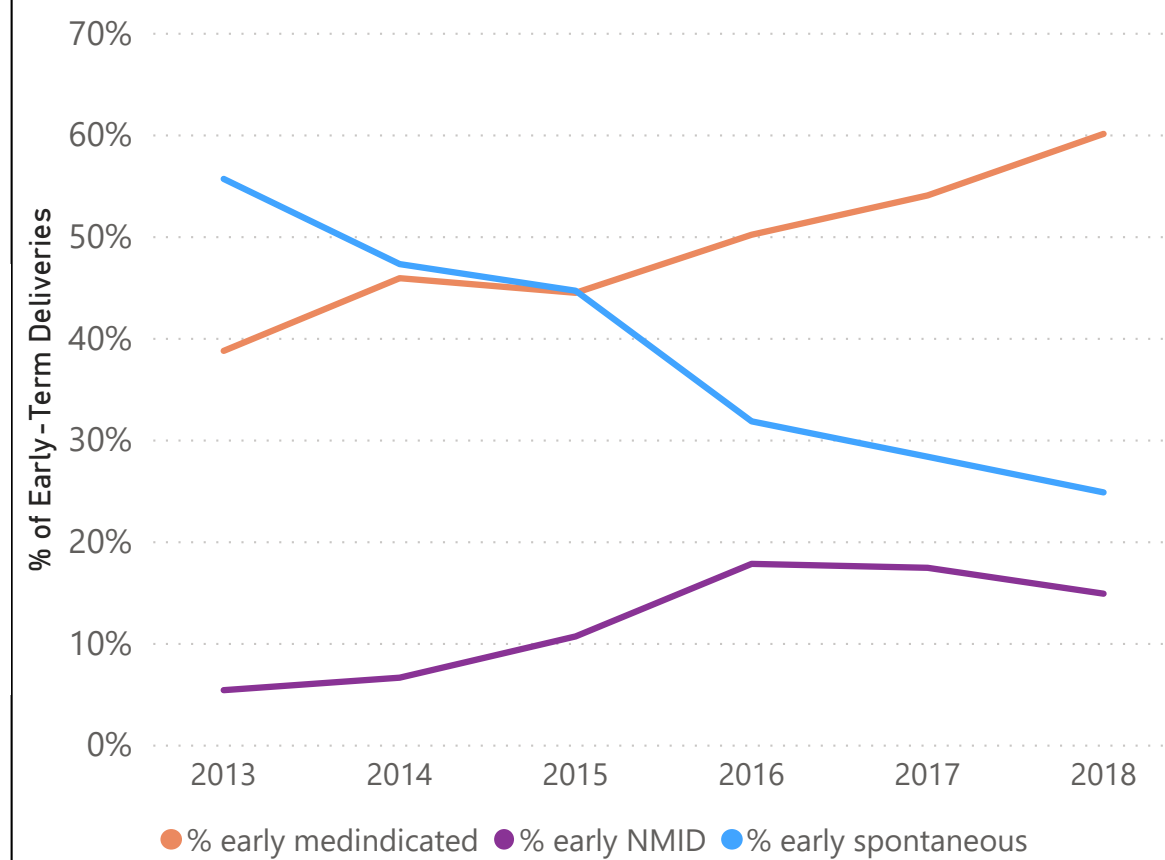
# B. Table of Contents

<b>E. Severe Maternal Morbidity</b>	
Percentage of Severe Maternal Morbidity	<b>13</b>
Percentage of Severe Maternal Morbidity (Not Including Blood Transfusions)	<b>13</b>
Percentage of Leading Types of Severe Maternal Morbidity	<b>14</b>
<b>F. Severe Hypertension/Preeclampsia</b>	
Percentage of Severe Hypertension/Preeclampsia	<b>15</b>
Percentage of Severe Maternal Morbidity Among Women With Severe Hypertension/Preeclampsia	<b>16</b>
Percentage of Severe Maternal Morbidity (Excluding Blood Transfusions) Among Women With Severe Hypertension/Preeclampsia	<b>16</b>
Percentage of Leading Types of Severe Maternal Morbidity Among Women With Severe Hypertension/Preeclampsia	<b>17</b>
<b>G. Obstetric Hemorrhage</b>	
Percentage of Obstetric Hemorrhage	<b>18</b>
Percentage of Severe Maternal Morbidity Among Women With Obstetric Hemorrhage	<b>19</b>
Percentage of Severe Maternal Morbidity (Excluding Blood Transfusions) Among Women With Obstetric Hemorrhage	<b>19</b>
Percentage of Leading Types of Severe Maternal Morbidity Among Women With Obstetric Hemorrhage	<b>20</b>
<b>H. Unexpected Complications of the Newborn</b>	
Percentage of Severe Unexpected Complications of the Newborn	<b>21</b>
Percentage of Leading Types Severe Unexpected Complications of the Newborn	<b>22</b>
Percentage of Moderate Unexpected Complications of the Newborn	<b>21</b>
Percentage of Leading Types Moderate Unexpected Complications of the Newborn	<b>23</b>

## % Non-medically Indicated Early-term Deliveries For All Delivery Hospitals in Florida



## Your Hospital % of Early-term Deliveries



### Your Hospital

	2013	2014	2015	2016	2017	2018
Percent	5.5%	6.7%	10.7%	17.9%	17.5%	14.9%
Numerator	60	82	158	264	277	192
Denominator	1100	1227	1471	1477	1584	1285

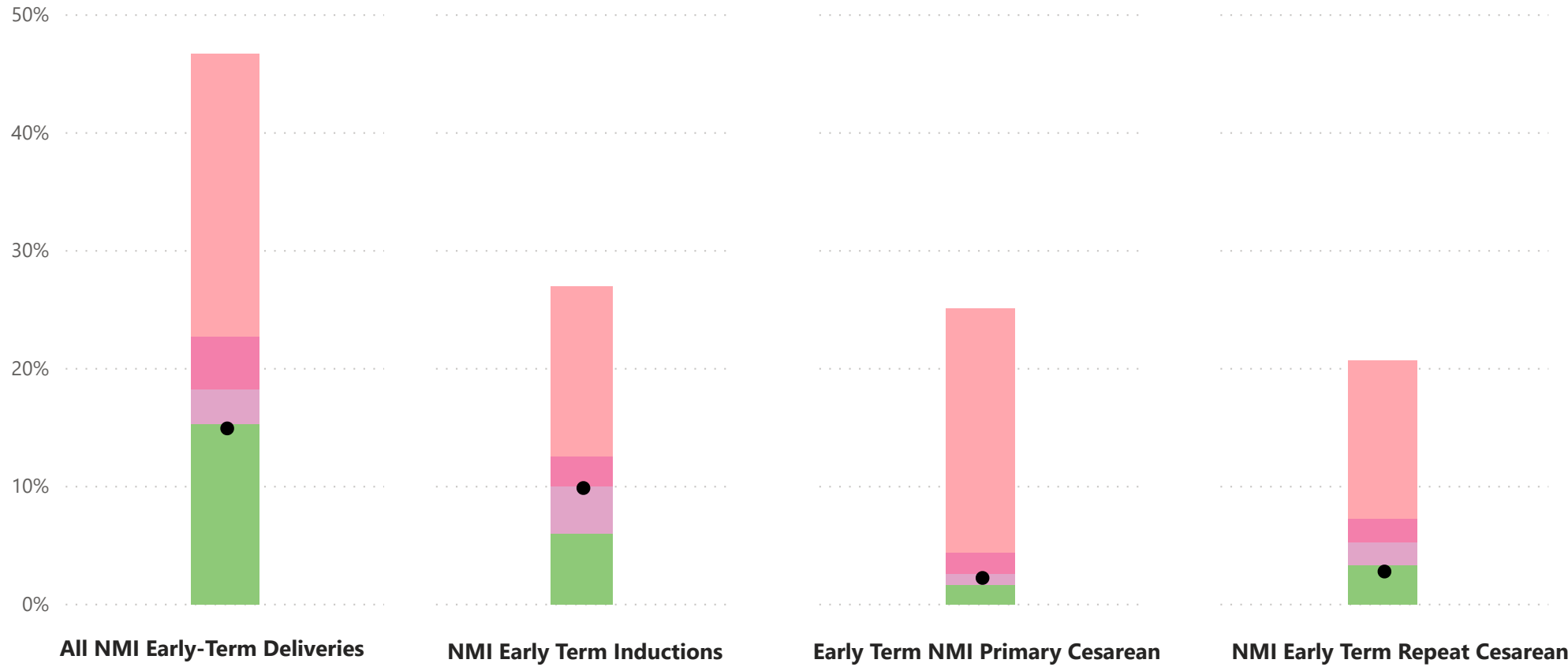
### All delivery Hospitals

	2013	2014	2015	2016	2017	2018
Percent	13.6%	13.0%	15.4%	19.5%	18.8%	17.8%
Numerator	7013	6625	8578	11138	10878	7827
Denominator	51456	50973	55626	57097	57971	43935

### Your Hospital

	2013	2014	2015	2016	2017	2018
# Early term deliveries	1100	1227	1471	1477	1584	1285
Early NMID	5.5%	6.7%	10.7%	17.9%	17.5%	14.9%
Early spontaneous	55.7%	47.4%	44.7%	31.9%	28.4%	24.9%
Early medindicated	38.8%	46.0%	44.5%	50.2%	54.1%	60.2%

# Non-Medically Indicated (NMI) Early-Term Deliveries by Type

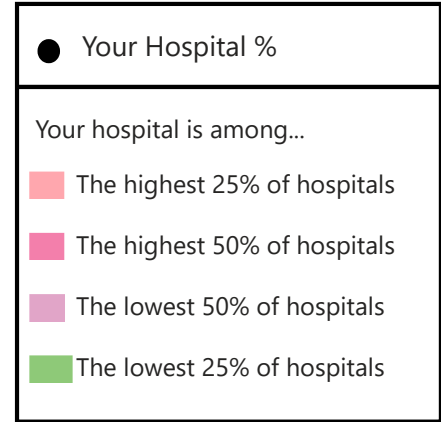
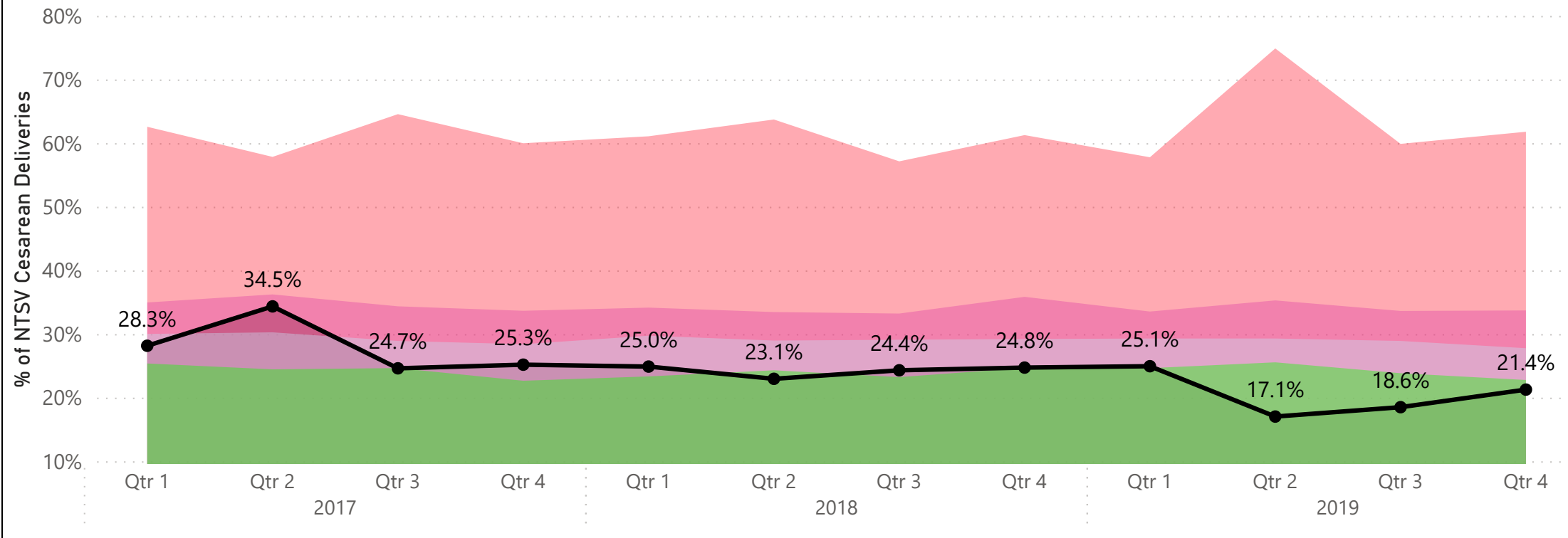


Your Hospital	
All NMI-Early Term Deliveries	NMI Early-term Induction
2018	2018
Percent: 14.9%	Percent: 9.88%
Numerator: 192	Numerator: 127
Denominator: 1285	Denominator: 1285
NMI Early-term Primary cs	NMID repeat cesarean
2018	2018
Percent: 2.26%	Percent: 2.80%
Numerator: 29	Numerator: 36
Denominator: 1285	Denominator: 1285

All Delivery Hospitals - Non-Medically Indicated Early-term Delivery by Delivery Type				
Year	% NMI Early Term D.	% NMI Early Term Inductions	% NMI Early Term Primary Cesarean	% NMI Early Term Repeat Cesarean
2018	17.8%	8.95%	3.52%	5.34%

Total Early Term Deliveries (State-wide Denominator)
43935

# Percentage of Cesarean Deliveries Among All NTSV Births For All Delivery Hospitals in Florida QUARTERLY



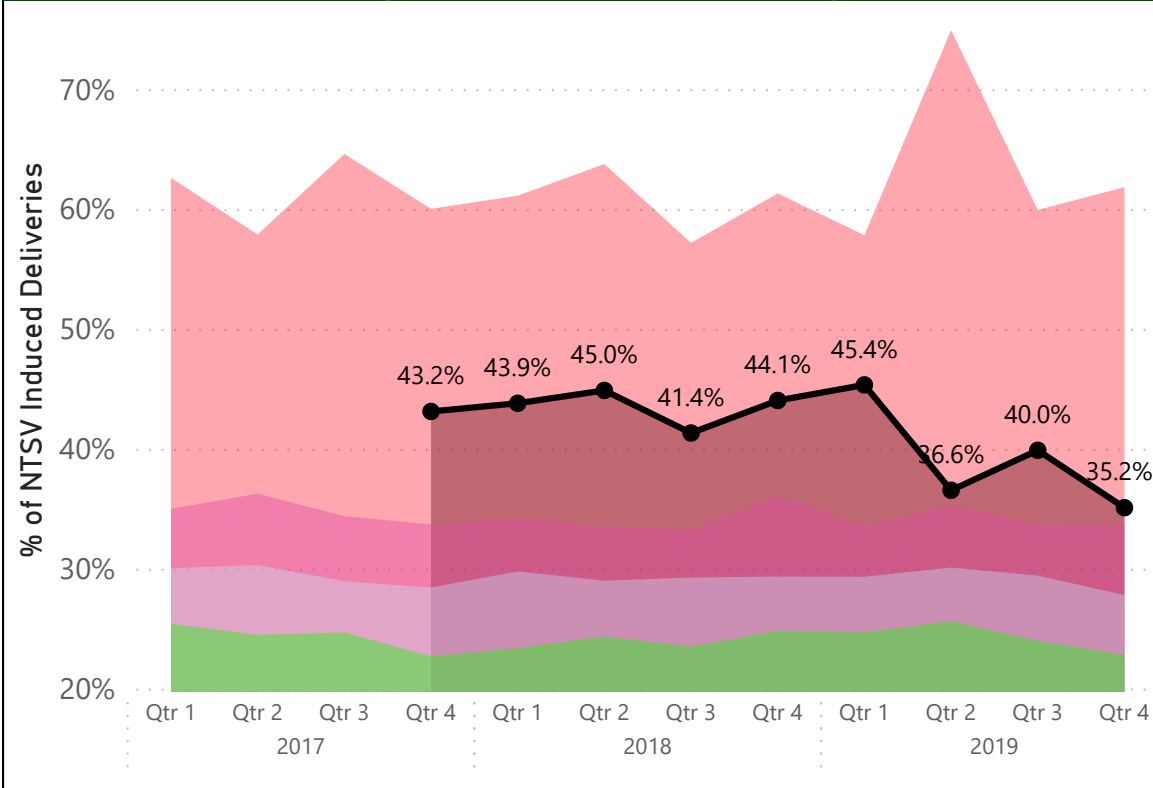
## Your Hospital Report

Year	2017				2018				2019			
	Qtr 1	Qtr 2	Qtr 3	Qtr 4	Qtr 1	Qtr 2	Qtr 3	Qtr 4	Qtr 1	Qtr 2	Qtr 3	Qtr 4
Percentage	28.3%	34.5%	24.7%	25.3%	25.0%	23.1%	24.4%	24.8%	25.1%	17.1%	18.6%	21.4%
Numerator	121	143	112	106	94	96	115	116	112	66	89	31
Denominator	428	415	453	419	376	416	471	467	447	385	478	145

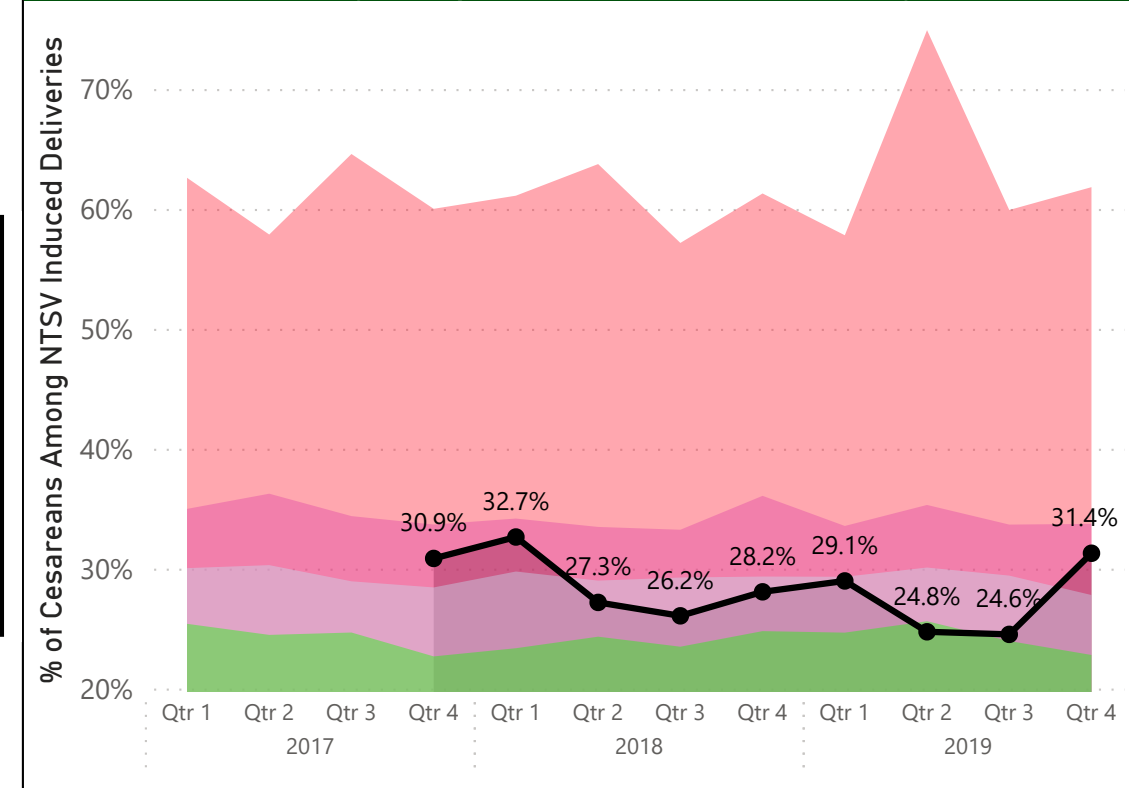
## All delivery Hospitals

Year	2017				2018				2019			
	Qtr 1	Qtr 2	Qtr 3	Qtr 4	Qtr 1	Qtr 2	Qtr 3	Qtr 4	Qtr 1	Qtr 2	Qtr 3	Qtr 4
Percentage	32.4%	32.7%	31.3%	30.5%	31.0%	31.2%	30.8%	31.6%	30.6%	31.0%	30.4%	29.6%
Numerator	5737	5533	6031	5938	5533	5320	5824	5985	5341	5273	5794	1878
Denominator	17691	16901	19272	19439	17844	17068	18933	18913	17431	16990	19047	6348

## % of Inductions Among All NTSV Births For All Delivery Hospitals in Florida (Quarterly)



## % of Cesarean Deliveries Among All NTSV Inductions For All Delivery Hospitals in Florida (Quarterly)



### Your Hospital Report

Year	2017				2018				2019			
	Qtr 1	Qtr 2	Qtr 3	Qtr 4	Qtr 1	Qtr 2	Qtr 3	Qtr 4	Qtr 1	Qtr 2	Qtr 3	Qtr 4
Percentage				43.2%	43.9%	45.0%	41.4%	44.1%	45.4%	36.6%	40.0%	35.2%
Numerator				181	165	187	195	206	203	141	191	51
Denominator	428	415	453	419	376	416	471	467	447	385	478	145

### All delivery Hospitals

Year	2017				2018				2019			
	Qtr 1	Qtr 2	Qtr 3	Qtr 4	Qtr 1	Qtr 2	Qtr 3	Qtr 4	Qtr 1	Qtr 2	Qtr 3	Qtr 4
Percentage	28.7%	28.5%	28.6%	28.7%	30.0%	30.2%	30.1%	31.1%	32.4%	32.7%	31.9%	33.7%
Numerator	5070	4818	5515	5587	5345	5154	5691	5891	5656	5551	6067	2139
Denominator	17691	16901	19272	19439	17844	17068	18933	18913	17431	16990	19047	6348

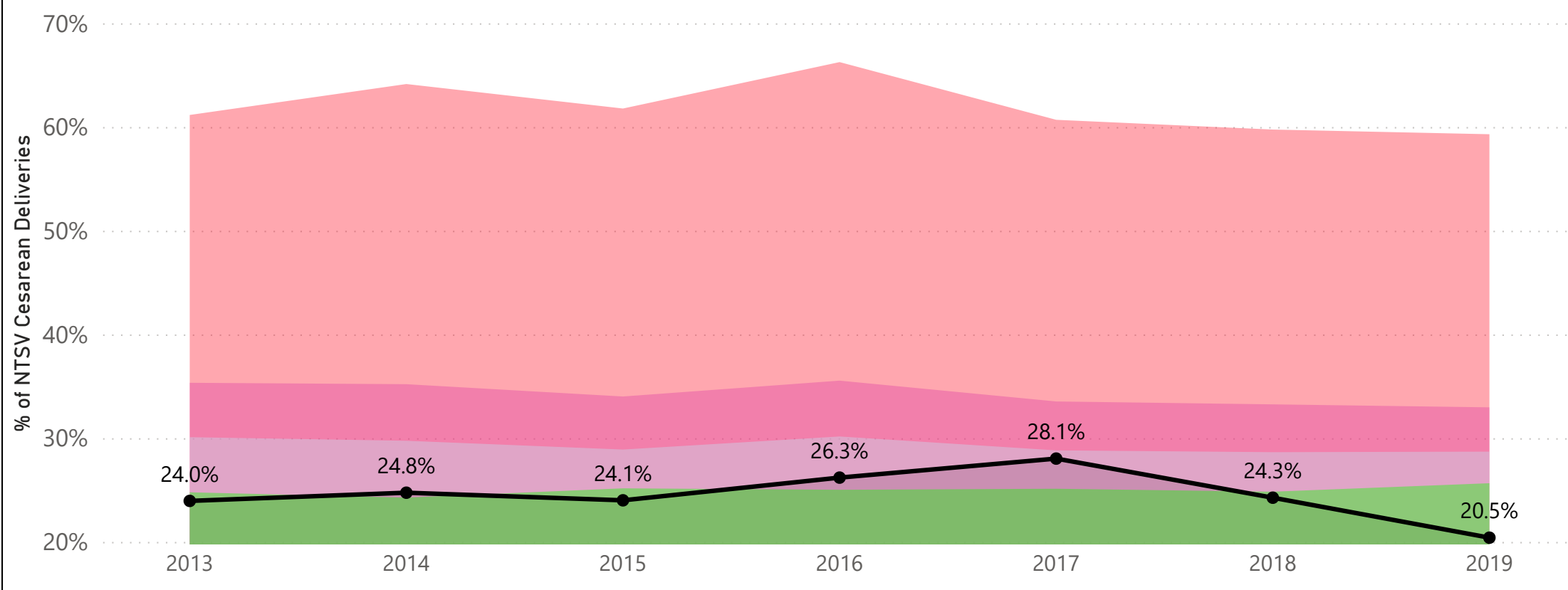
### Your Hospital Report

Year	2017				2018				2019				
	Qtr 4	Qtr 1	Qtr 2	Qtr 3	Qtr 4	Qtr 1	Qtr 2	Qtr 3	Qtr 4	Qtr 1	Qtr 2	Qtr 3	Qtr 4
Percentage	30.9%	32.7%	27.3%	26.2%	28.2%	29.1%	24.8%	24.6%	31.4%				
Numerator	56	54	51	51	58	59	35	47	16				
Denominator	181	165	187	195	206	203	141	191	51				

### All delivery Hospitals

Year	2017				2018				2019			
	Qtr 1	Qtr 2	Qtr 3	Qtr 4	Qtr 1	Qtr 2	Qtr 3	Qtr 4	Qtr 1	Qtr 2	Qtr 3	Qtr 4
Percentage	34.1%	34.1%	34.0%	33.7%	33.1%	32.9%	32.2%	33.6%	31.8%	31.7%	32.3%	31.3%
Numerator	1727	1641	1874	1883	1768	1698	1834	1979	1796	1762	1957	670
Denominator	5070	4818	5515	5587	5345	5154	5691	5891	5656	5551	6067	2139

# Percentage of Cesarean Deliveries Among All NTSV Births For All Delivery Hospitals in Florida



● Your Hospital %

Your hospital is among...

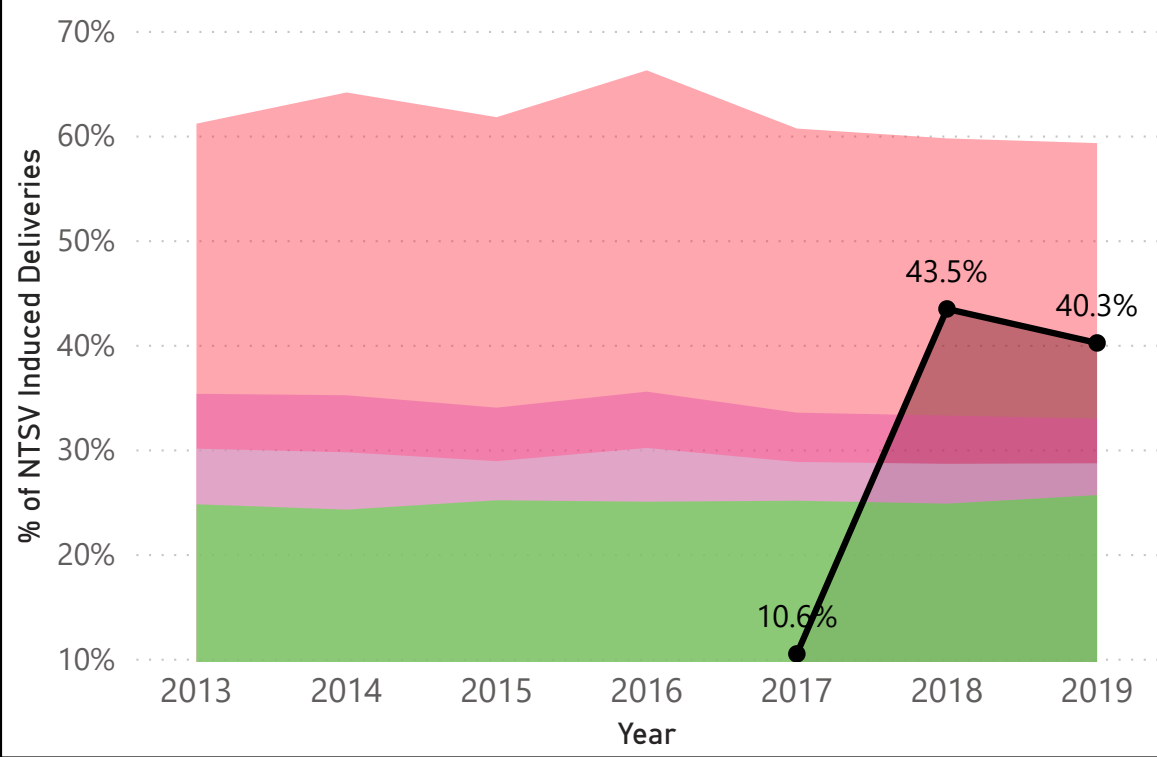
- The highest 25% of hospitals
- The highest 50% of hospitals
- The lowest 50% of hospitals
- The lowest 25% of hospitals

Your Hospital Report							
	2013	2014	2015	2016	2017	2018	2019
Percentage	24.0%	24.8%	24.1%	26.3%	28.1%	24.3%	20.5%
Numerator	382	407	446	475	482	421	298
Denominator	1590	1640	1852	1808	1715	1730	1455

All delivery Hospitals							
	2013	2014	2015	2016	2017	2018	2019
Percentage	32.8%	31.9%	31.9%	32.1%	31.7%	31.1%	30.6%
Numerator	23755	23463	23607	23652	23239	22662	18286
Denominator	72341	73551	73990	73591	73303	72758	59816



### % of Inductions Among All NTSV Births For All Delivery Hospitals in Florida

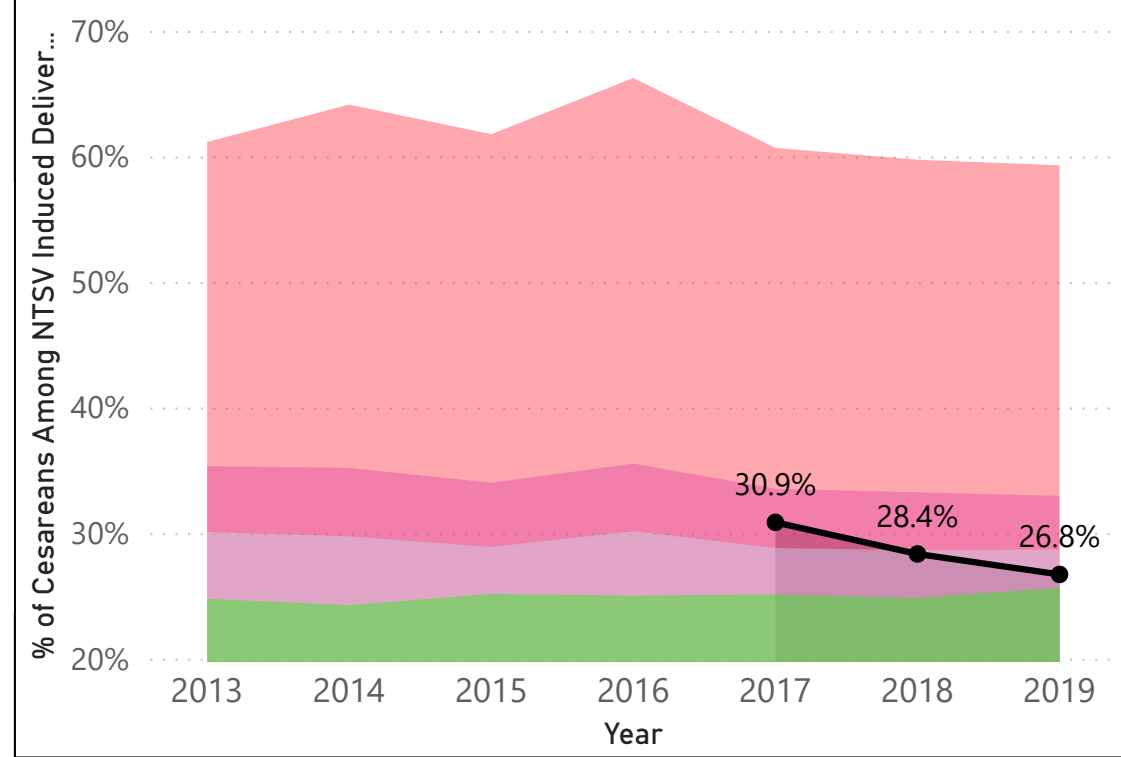


● Your Hospital %

Your hospital is among...

- The highest 25% of hospitals
- The highest 50% of hospitals
- The lowest 50% of hospitals
- The lowest 25% of hospitals

### % of Cesarean Deliveries Among All NTSV Inductions For All Delivery Hospitals in Florida



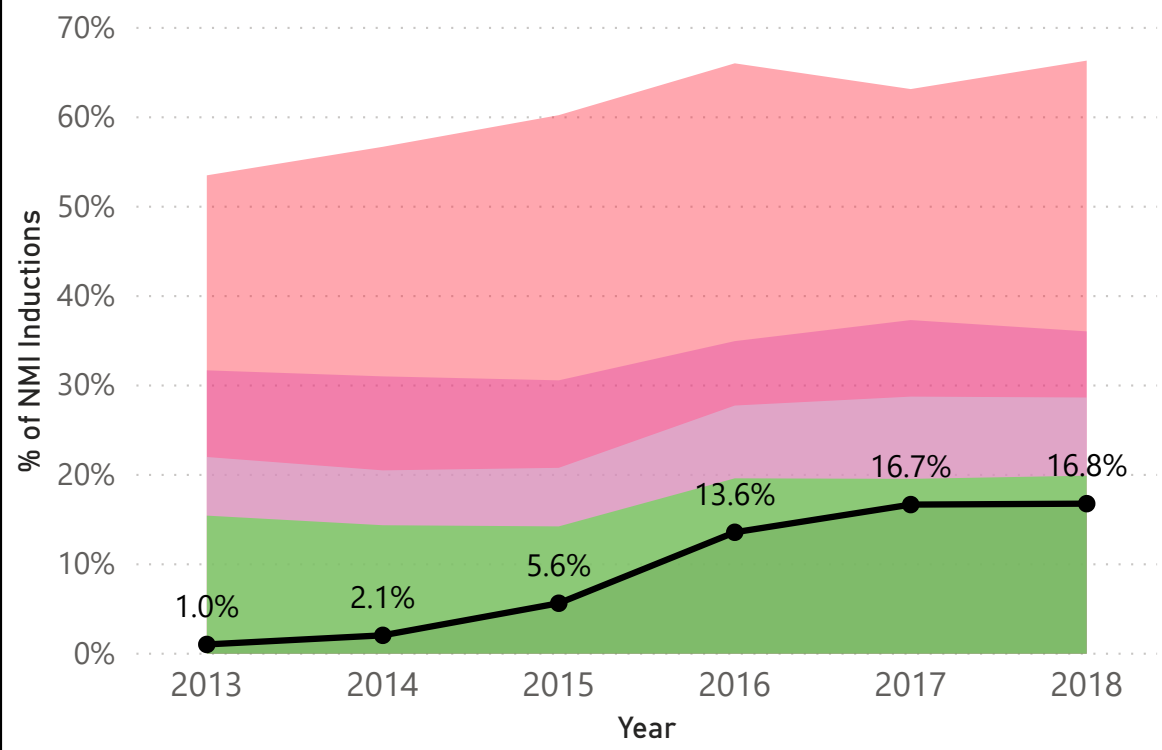
Your Hospital Report							
	2013	2014	2015	2016	2017	2018	2019
Percentage					10.6%	43.5%	40.3%
Numerator					181	753	586
Denominator	1590	1640	1852	1808	1715	1730	1455

Your Hospital Report			
	2017	2018	2019
Percentage	30.9%	28.4%	26.8%
Numerator	56	214	157
Denominator	181	753	586

All delivery Hospitals							
	2013	2014	2015	2016	2017	2018	2019
Percentage	29.3%	28.2%	27.0%	28.2%	28.6%	30.3%	32.5%
Numerator	21178	20764	20008	20724	20990	22081	19413
Denominator	72341	73551	73990	73591	73303	72758	59816

All delivery Hospitals							
	2013	2014	2015	2016	2017	2018	2019
Percentage	34.5%	33.1%	33.4%	34.3%	33.9%	33.0%	31.9%
Numerator	7302	6873	6685	7104	7125	7279	6185
Denominator	21178	20764	20008	20724	20990	22081	19413

### % Non-Medically Indicated Induction of Labor Among Singleton, Vertex Births at 39-40 Weeks of Gestation in Multiparous Women For All Delivery Hospitals in Florida

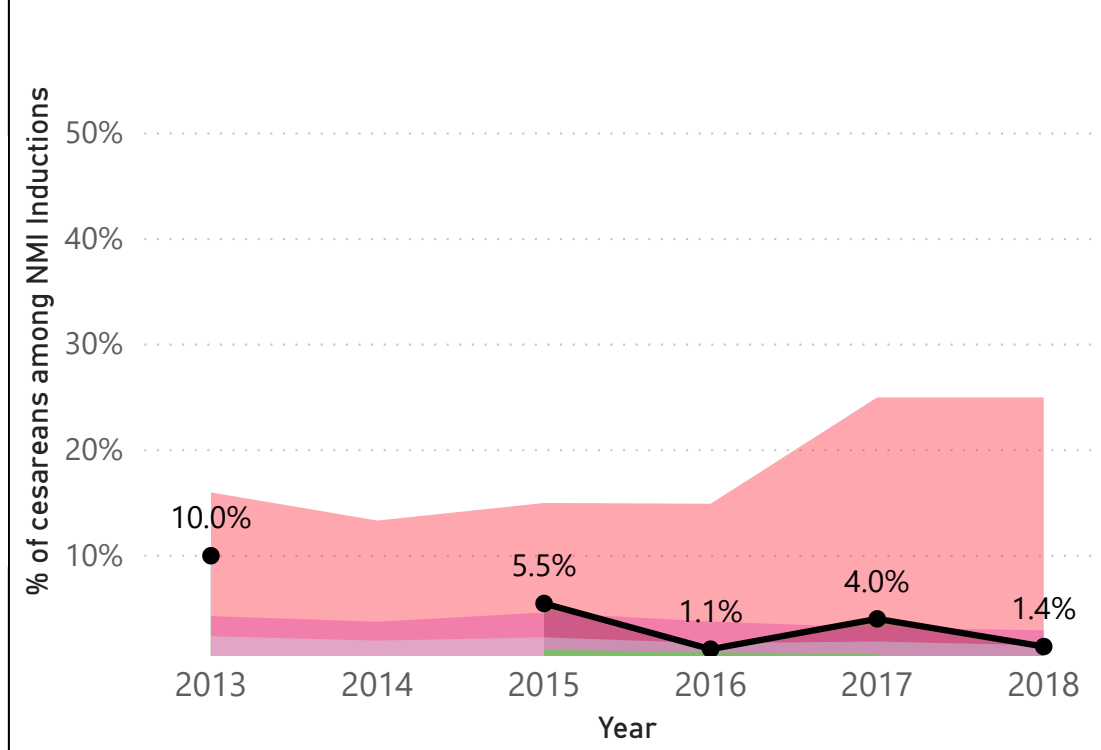


● Your Hospital %

Your hospital is among...

- The highest 25% of hospitals
- The highest 50% of hospitals
- The lowest 50% of hospitals
- The lowest 25% of hospitals

### % Cesareans Among Singleton, Vertex, Non-Medically Indicated Inductions at 39-40 Weeks of Gestation in Multiparous Women For All Delivery Hospitals in Florida



#### Your Hospital Report

	2013	2014	2015	2016	2017	2018
Percent	1.04%	2.06%	5.65%	13.58%	16.68%	16.78%
Numerator	10	21	73	174	199	143
Denominator	964	1021	1293	1281	1193	852

#### All Delivery Hospitals

	2013	2014	2015	2016	2017	2018
Percent	21.26%	19.17%	19.25%	25.40%	25.89%	25.74%
Numerator	8951	8312	9461	12526	12574	9270
Denominator	42112	43352	49156	49322	48572	36015

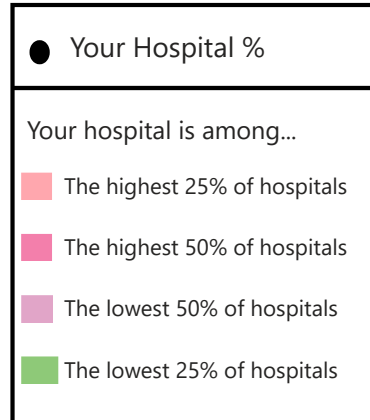
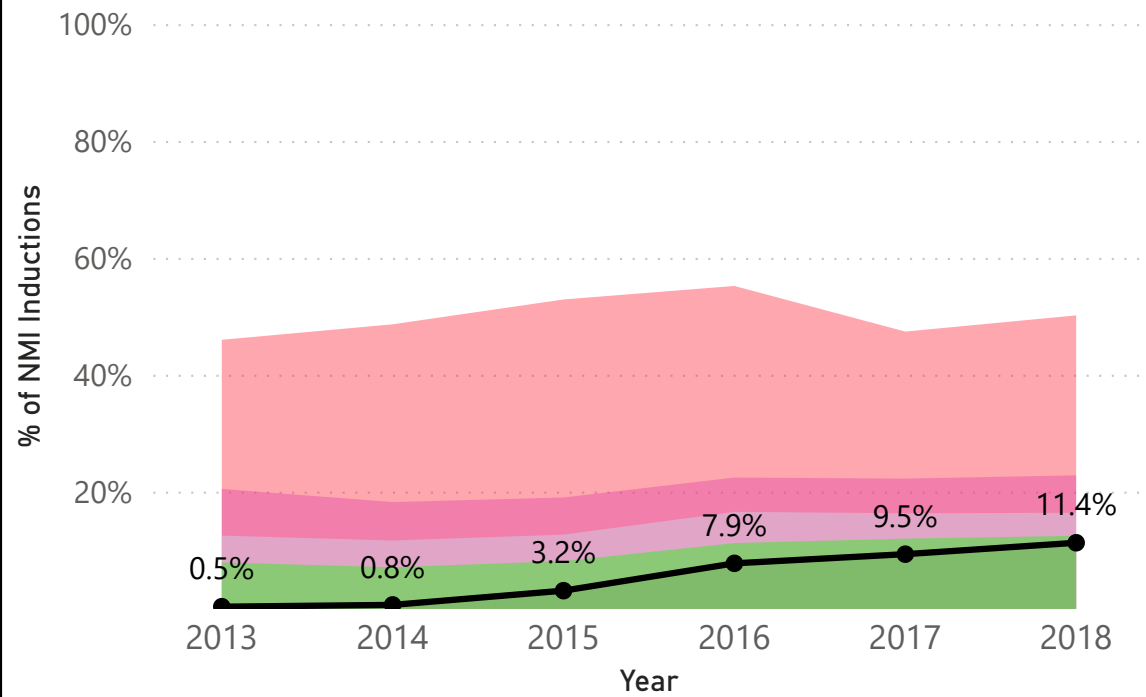
#### Your Hospital Report

	2013	2014	2015	2016	2017	2018
Percent	10.00%		5.48%	1.15%	4.02%	1.40%
Numerator	1		4	2	8	2
Denominator	10	21	73	174	199	143

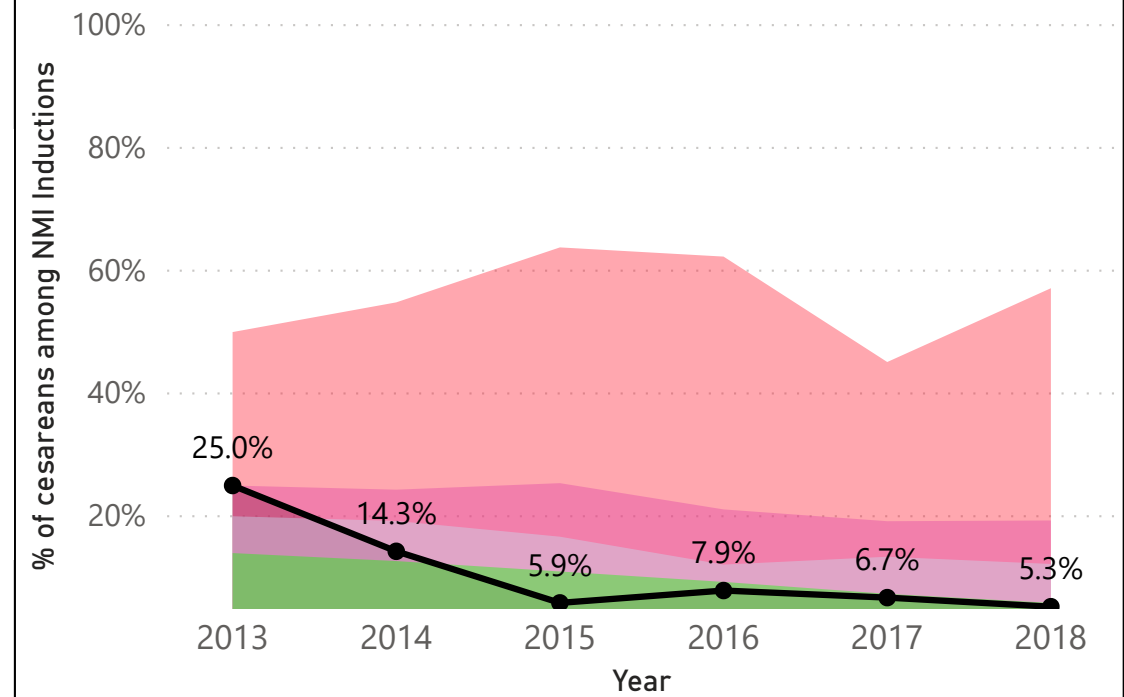
#### All Delivery Hospitals

	2013	2014	2015	2016	2017	2018
Percent	2.74%	2.65%	3.04%	2.55%	2.43%	2.17%
Numerator	245	220	288	320	306	201
Denominator	8951	8312	9461	12526	12574	9270

### % Non-Medically Indicated Induction of Labor Among Singleton, Vertex Births at 39-40 Weeks of Gestation in Nulliparous Women For All Delivery Hospitals in Florida



### % Cesarean Among Singleton, Vertex, Non-Medically Indicated Inductions at 39-40 Weeks of Gestation in Nulliparous Women For All Delivery Hospitals in Florida



#### Your Hospital Report

	2013	2014	2015	2016	2017	2018
Percent	0.49%	0.80%	3.23%	7.91%	9.48%	11.43%
Numerator	4	7	34	76	89	76
Denominator	817	877	1052	961	939	665

#### All Delivery Hospitals

	2013	2014	2015	2016	2017	2018
Percent	12.45%	11.29%	12.43%	15.68%	15.97%	15.99%
Numerator	5506	5018	5871	7313	7348	5328
Denominator	44231	44464	47234	46650	46010	33322

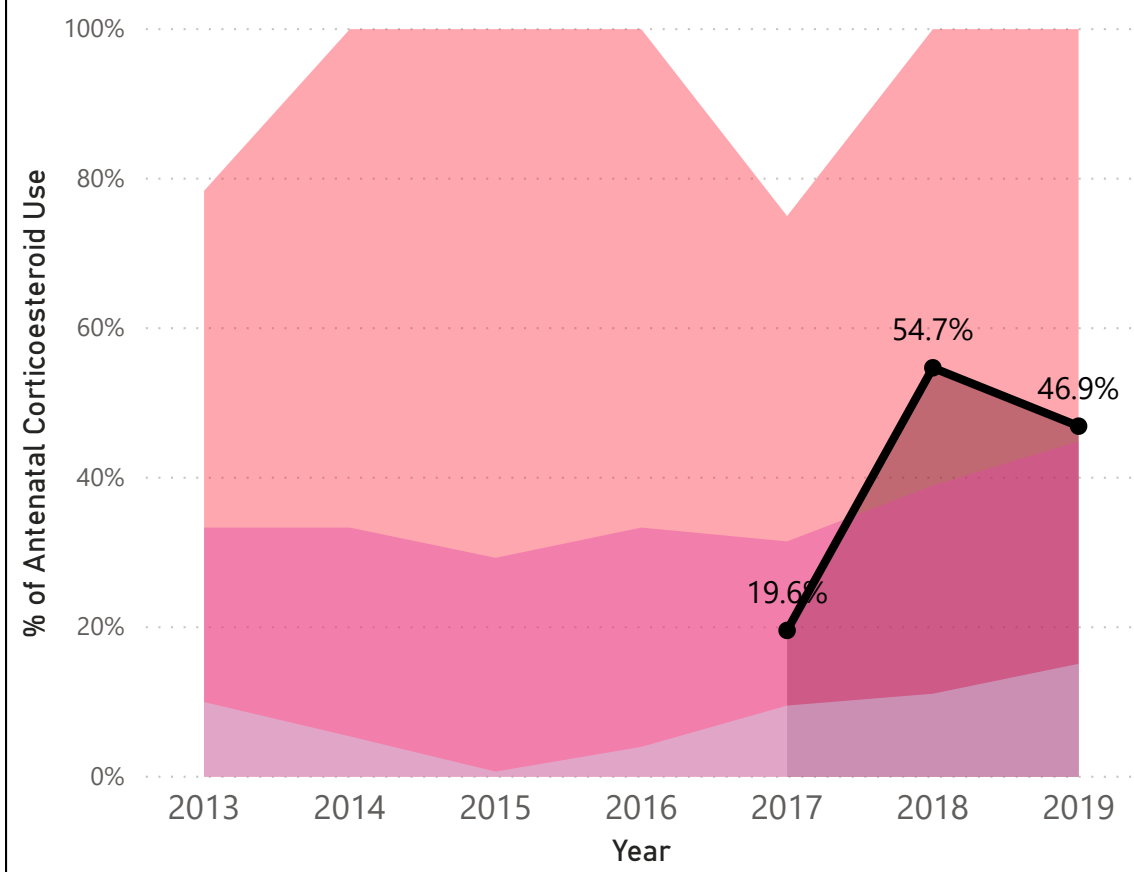
#### Your Hospital Report

	2013	2014	2015	2016	2017	2018
Percent	25.00%	14.29%	5.88%	7.89%	6.74%	5.26%
Numerator	1	1	2	6	6	4
Denominator	4	7	34	76	89	76

#### All Delivery Hospitals

	2013	2014	2015	2016	2017	2018
Percent	20.56%	19.85%	19.96%	16.72%	15.36%	14.96%
Numerator	1132	996	1172	1223	1129	797
Denominator	5506	5018	5871	7313	7348	5328

### % Antenatal Corticosteroid Use Among Infants Born at 23-33 Weeks of Gestation For All Level III NICU Hospitals in FL

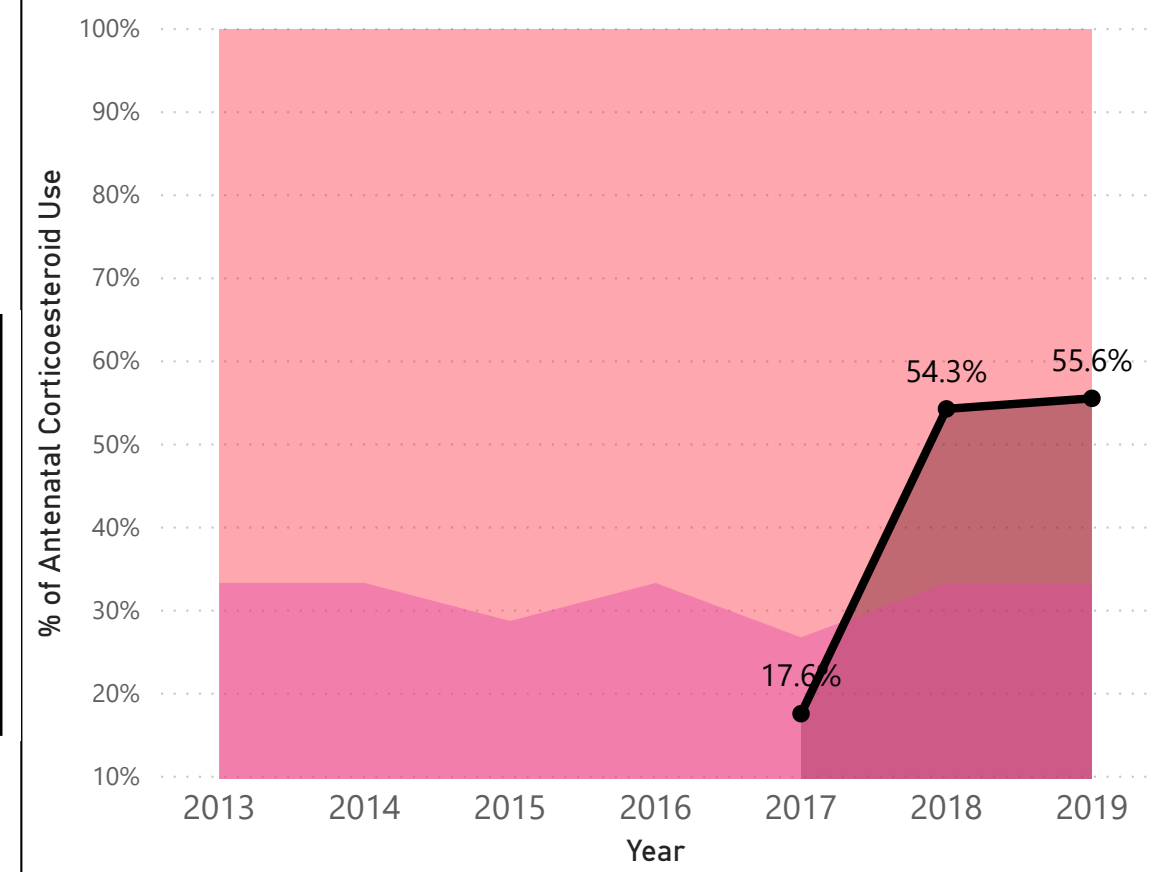


● Your Hospital %

Your hospital is among...

- The highest 25% of hospitals
- The highest 50% of hospitals
- The lowest 50% of hospitals
- The lowest 25% of hospitals

### % Antenatal Corticosteroid Use Among Infants Born at 24-31 Weeks of Gestation For All Level III NICU Hospitals in FL



#### Your hospital

	2013	2014	2015	2016	2017	2018	2019
Percent					19.6%	54.7%	46.9%
Numerator					37	93	68
Denominator	164	155	159	194	189	170	145

#### All delivery hospitals in the state

	2013	2014	2015	2016	2017	2018	2019
Percent	16.8%	19.2%	16.4%	19.0%	17.6%	24.7%	29.5%
Numerator	745	884	770	877	829	1151	1169
Denominator	4445	4602	4707	4610	4721	4664	3958

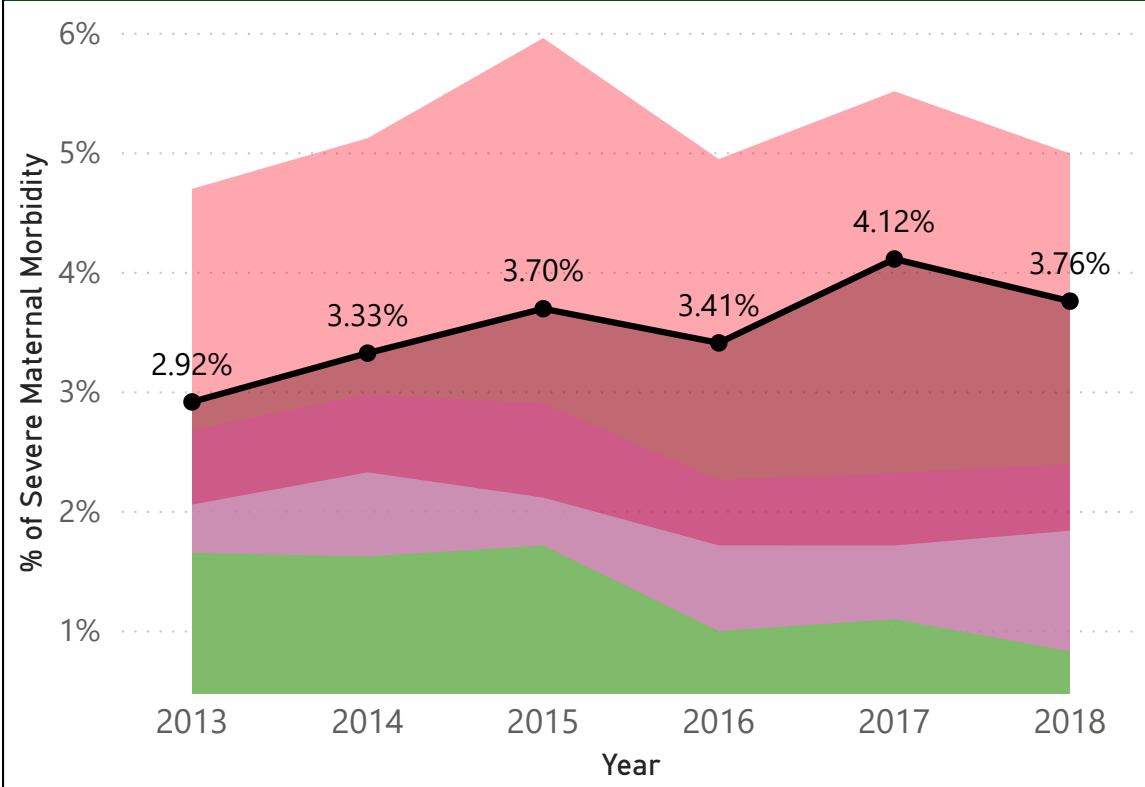
#### Your hospital

	2013	2014	2015	2016	2017	2018	2019
Percent					17.6%	54.3%	55.6%
Numerator					19	57	45
Denominator	73	86	89	112	108	105	81

#### All delivery hospitals in the state

	2013	2014	2015	2016	2017	2018	2019
Percent	17.9%	19.9%	17.7%	19.1%	17.1%	25.1%	30.5%
Numerator	431	500	449	478	446	644	651
Denominator	2405	2509	2534	2502	2611	2568	2132

## % of Severe Maternal Morbidity For All Level III NICU Hospitals in Florida



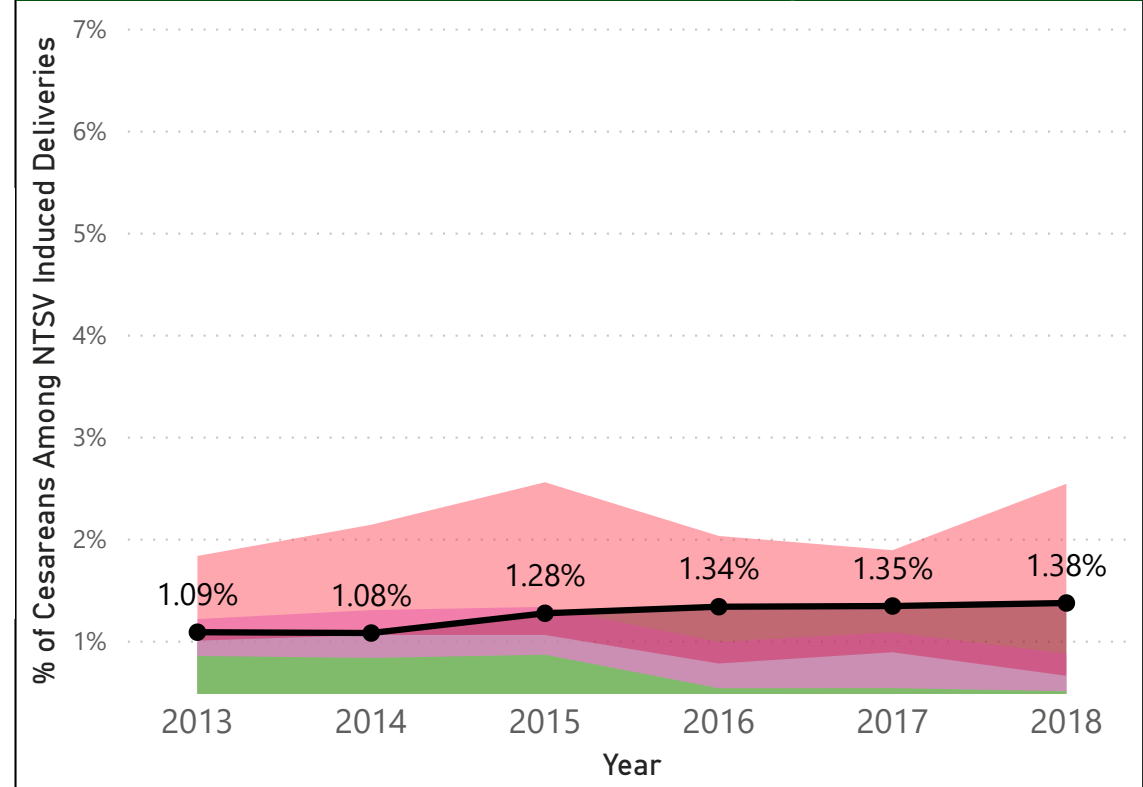
### Your Hospital Report

	2013	2014	2015	2016	2017	2018
Percent	2.92%	3.33%	3.70%	3.41%	4.12%	3.76%
Numerator	147	178	220	206	241	232
Denominator	5034	5348	5946	6034	5855	6165

### All delivery Hospitals

	2013	2014	2015	2016	2017	2018
Percent	2.17%	2.39%	2.51%	1.99%	2.19%	2.01%
Numerator	2261	2542	2741	2199	2410	2193
Denominator	104136	106336	109180	110246	110109	108943

## % of Severe Maternal Morbidity, Not Including Blood Transfusions For All Level III NICU Hospitals in Florida



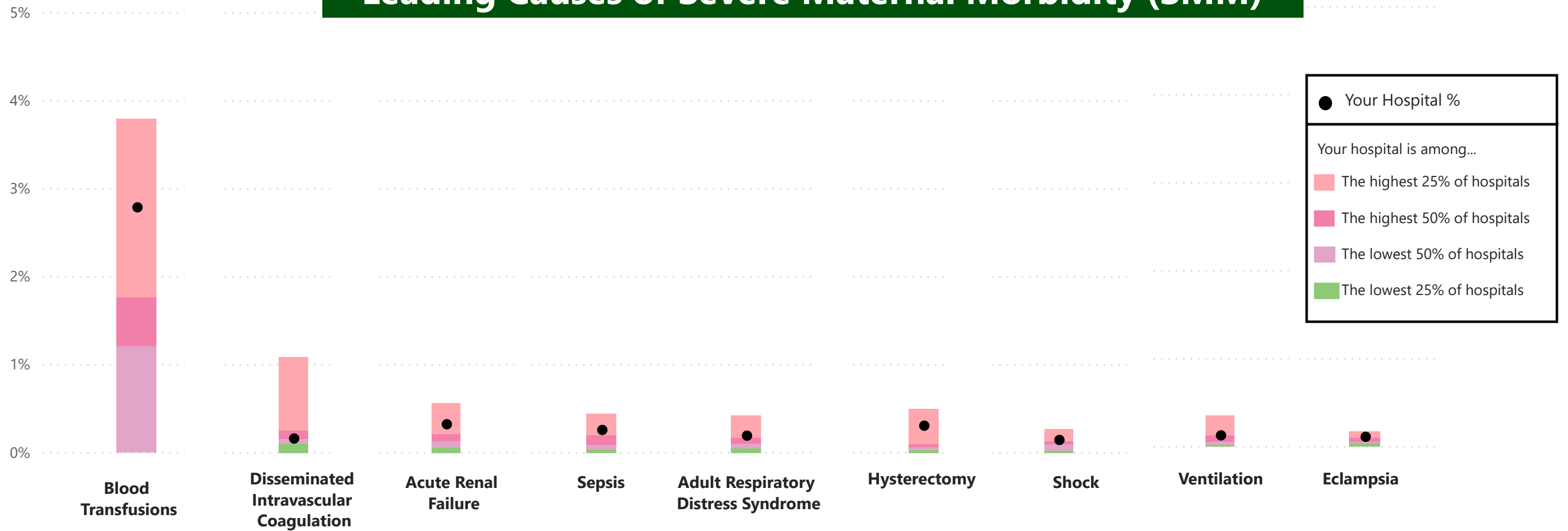
### Your Hospital Report

	2013	2014	2015	2016	2017	2018
Percent	1.09%	1.08%	1.28%	1.34%	1.35%	1.38%
Numerator	55	58	76	81	79	85
Denominator	5034	5348	5946	6034	5855	6165

### All delivery Hospitals

	2013	2014	2015	2016	2017	2018
Percent	0.98%	1.08%	1.11%	0.87%	0.94%	0.87%
Numerator	1023	1145	1214	964	1035	945
Denominator	104136	106336	109180	110246	110109	108943

# Leading Causes of Severe Maternal Morbidity (SMM)



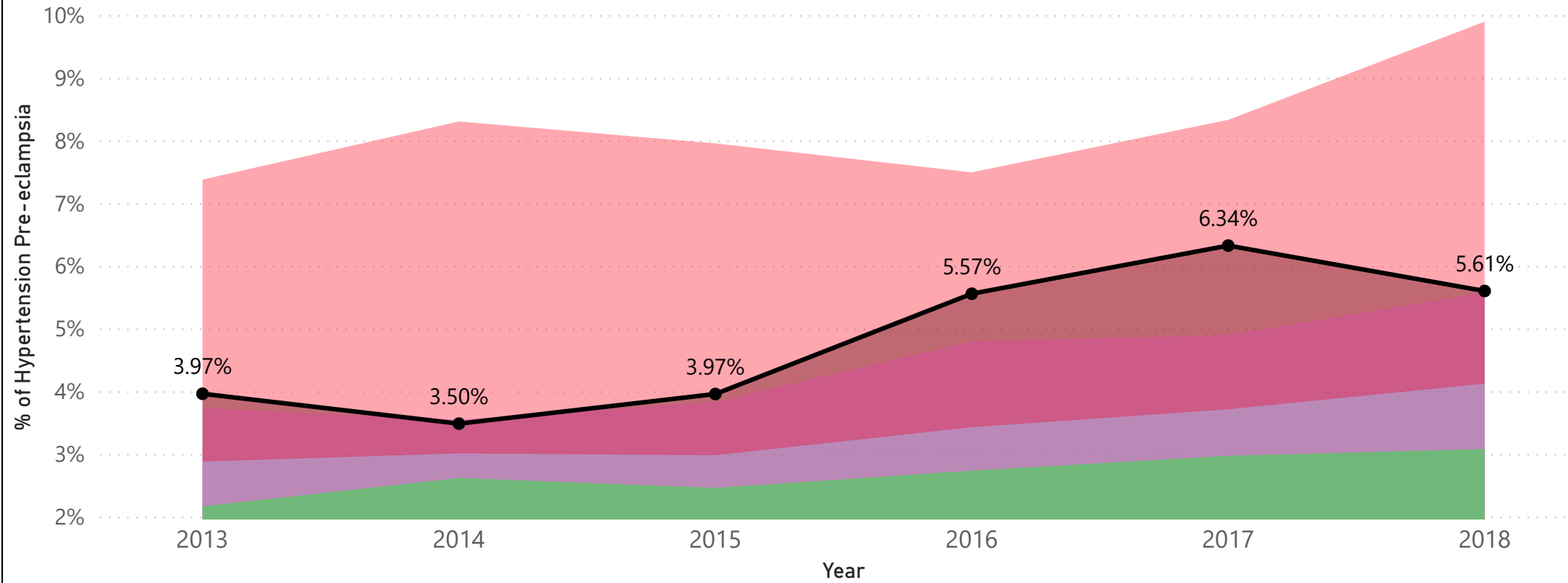
Your Hospital	
<b>Blood Transfusions</b>	<b>DIC</b>
2018	2018
% BT: 2.79%	%: 0.16%
BT numerator: 172	N: 10
BT denominator: 6165	D: 6165
<b>Renal</b>	<b>Sepsis</b>
2018	2018
%: 0.32%	%: 0.26%
N: 20	N: 16
D: 6165	D: 6165
<b>ARDS</b>	<b>Hysterectomy</b>
2018	2018
%: 0.19%	%: 0.31%
N: 12	N: 19
D: 6165	D: 6165
<b>Shock</b>	<b>Ventilation</b>
2018	2018
%: 0.15%	%: 0.13%
N: 9	N: 8
D: 6165	D: 6165
<b>Eclampsia</b>	
2018	
%: 0.11%	
N: 7	
D: 6165	

All Delivery Hospitals SMM by Type									
% Blood Transfusions	% DIC	% Renal	% Sepsis	% ARDS	% Hysterectomy	% Shock	% Ventilation	% Eclampsia	
1.32%	0.19%	0.17%	0.15%	0.12%	0.11%	0.10%	0.08%	0.07%	

**# of Women with SMM (all hospitals denominator)**

**108943**

## % of Hypertension Preeclampsia For All Level III NICU Hospitals in Florida



● Your Hospital %

---

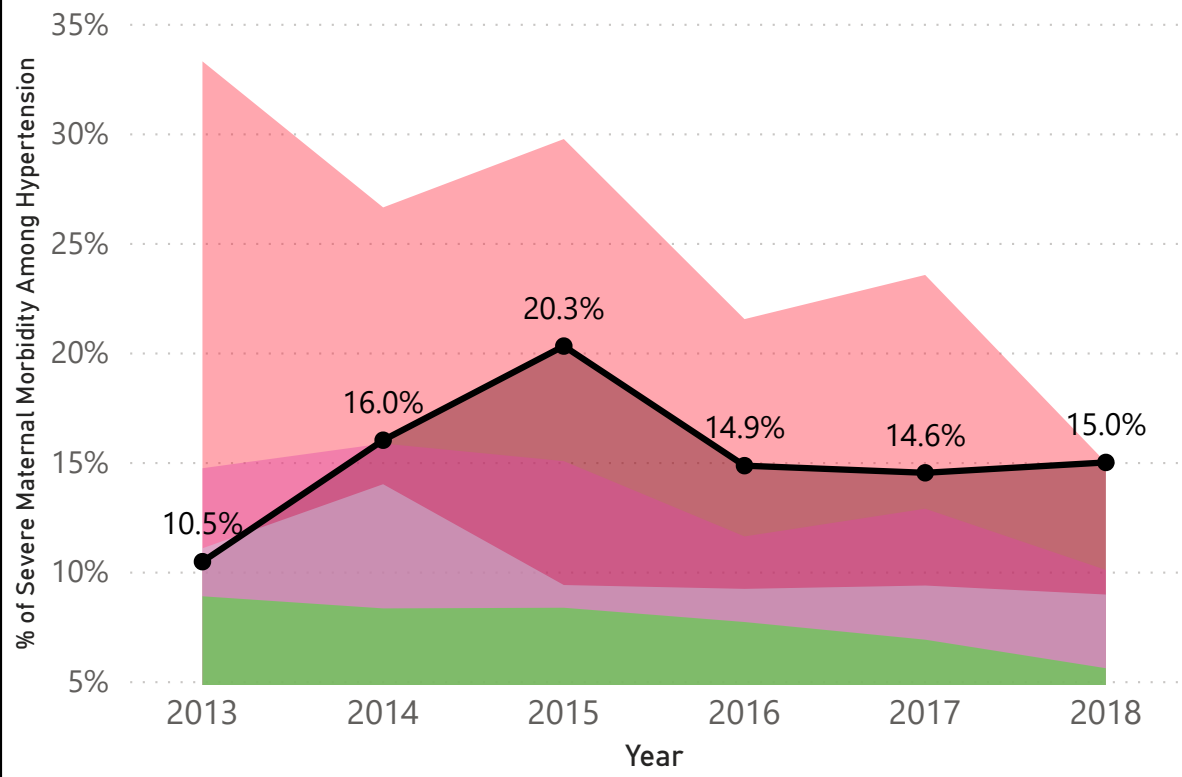
Your hospital is among...

- The highest 25% of hospitals
- The highest 50% of hospitals
- The lowest 50% of hospitals
- The lowest 25% of hospitals

Your Hospital Report						
	2013	2014	2015	2016	2017	2018
Percent	3.97%	3.50%	3.97%	5.57%	6.34%	5.61%
Numerator	200	187	236	336	371	346
Denominator	5034	5348	5946	6034	5855	6165

All delivery Hospitals						
	2013	2014	2015	2016	2017	2018
Percent	3.27%	3.45%	3.64%	3.94%	4.34%	4.74%
Numerator	3401	3669	3976	4340	4777	5163
Denominator	104136	106336	109180	110246	110109	108943

### % of Severe Maternal Morbidity Among Severe Hypertension/Preeclampsia For All Level III NICU Hospitals in FL

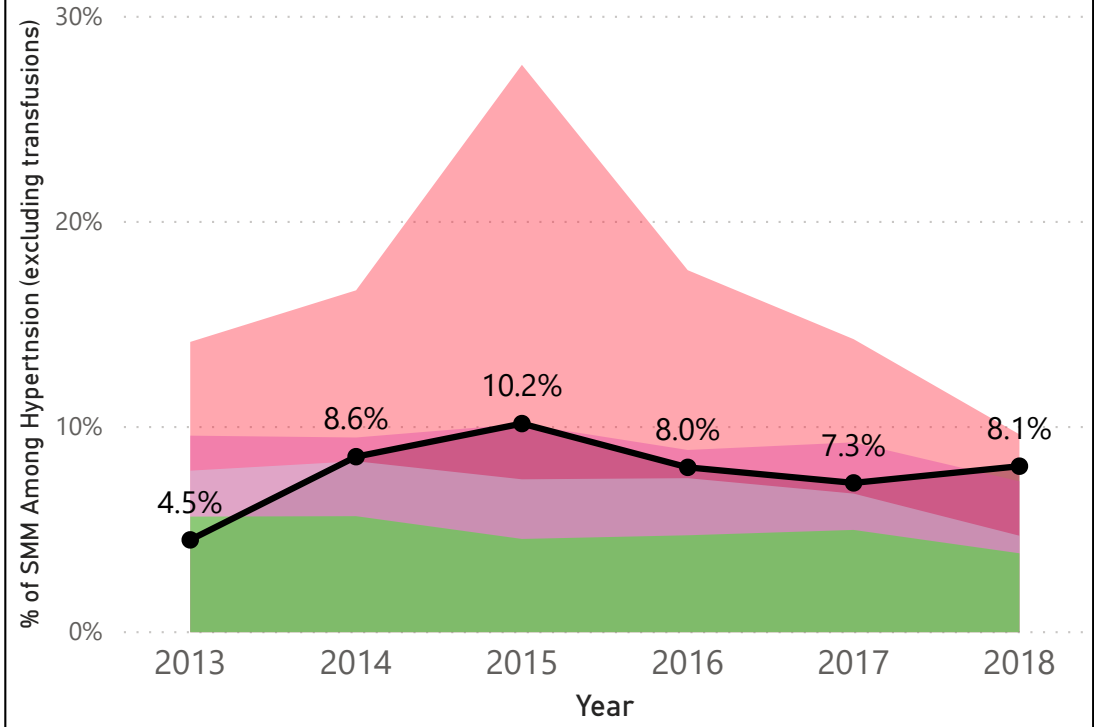


● Your Hospital %

Your hospital is among...

- The highest 25% of hospitals
- The highest 50% of hospitals
- The lowest 50% of hospitals
- The lowest 25% of hospitals

### % of Severe Maternal Morbidity Among Severe Hypertension, Not Including Blood Transfusions For All Level III NICU Hospitals in Florida



#### Your Hospital Report

	2013	2014	2015	2016	2017	2018
Percent	10.50%	16.04%	20.34%	14.88%	14.56%	15.03%
Numerator	21	30	48	50	54	52
Denominator	200	187	236	336	371	346

#### Your Hospital Report

	2013	2014	2015	2016	2017	2018
Percent	4.50%	8.56%	10.17%	8.04%	7.28%	8.09%
Numerator	9	16	24	27	27	28
Denominator	200	187	236	336	371	346

#### All delivery Hospitals

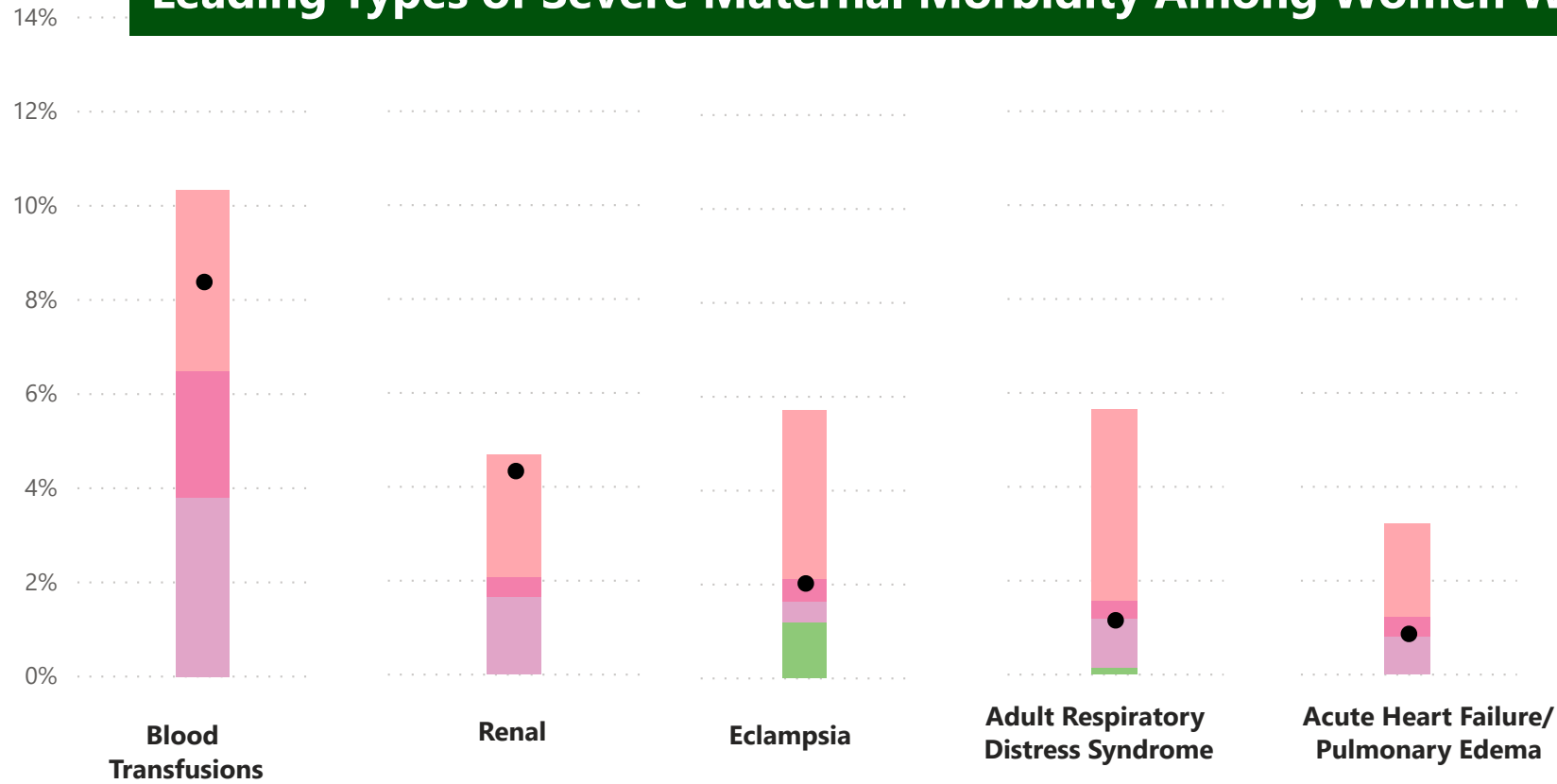
	2013	2014	2015	2016	2017	2018
Percent	11.29%	12.02%	10.64%	10.23%	10.59%	8.87%
Numerator	384	441	423	444	506	458
Denominator	3401	3669	3976	4340	4777	5163

#### All delivery Hospitals

	2013	2014	2015	2016	2017	2018
Percent	7.00%	7.03%	6.99%	6.87%	6.95%	5.60%
Numerator	238	258	278	298	332	289
Denominator	3401	3669	3976	4340	4777	5163



# Leading Types of Severe Maternal Morbidity Among Women With Severe Hypertension/Preeclampsia



● Your Hospital %

Your hospital is among...

- The highest 25% of hospitals
- The highest 50% of hospitals
- The lowest 50% of hospitals
- The lowest 25% of hospitals

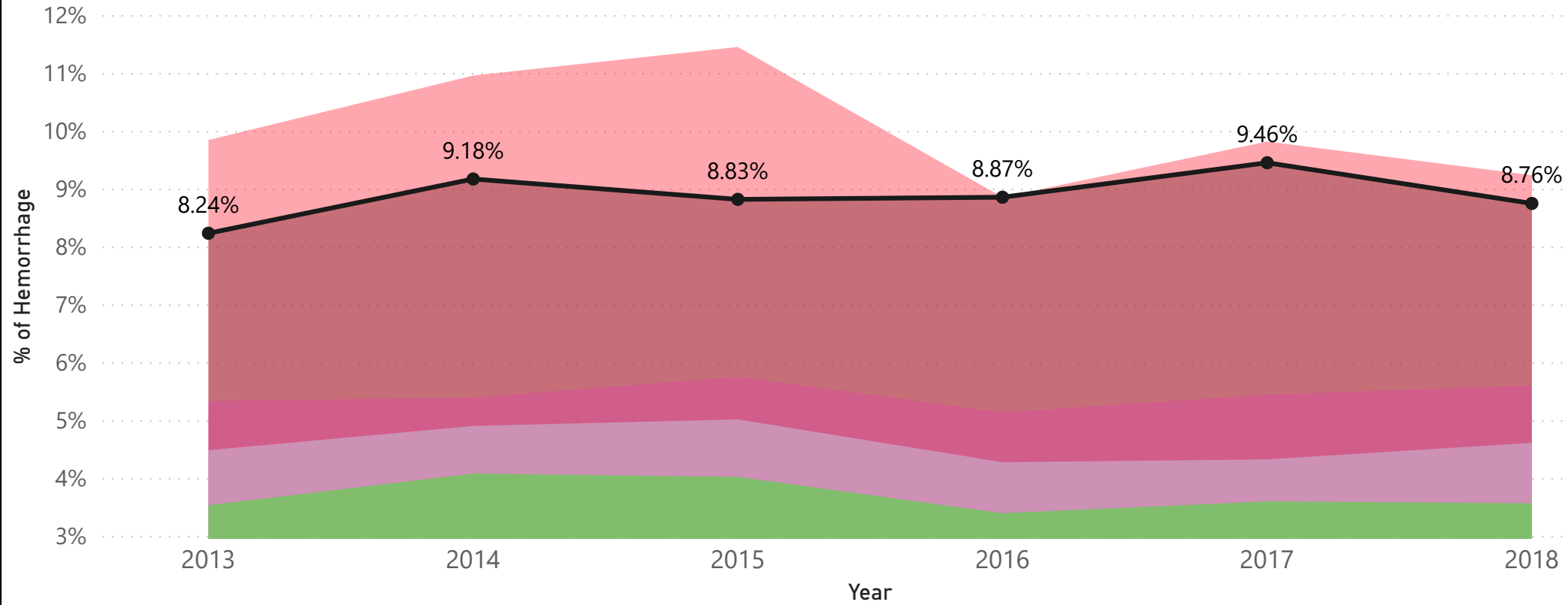
Your Hospital	
Blood Transfusions	2018
% BT	8.38%
BT numerator	29
BT denominator	346
Renal	2018
%	4.34%
N	15
D	346
Eclampsia	2018
%	2.02%
N	7
D	346
ARDS	2018
%	1.16%
N	4
D	346
Acute Heart Fail	2018
%	0.87%
N	3
D	346

All Delivery Hospitals SMM Among Severe Hypertension by type					
	% Blood Transfusions	% Eclampsia	% Renal	% ARDS	% Acute Heart Failure
	4.14%	1.49%	0.17%	1.10%	1.01%

Women with Severe Hypertension  
(all hospitals denominator)

**5163**

## % of Obstetric Hemorrhage For All Level III NICU Hospitals in Florida



● Your Hospital %

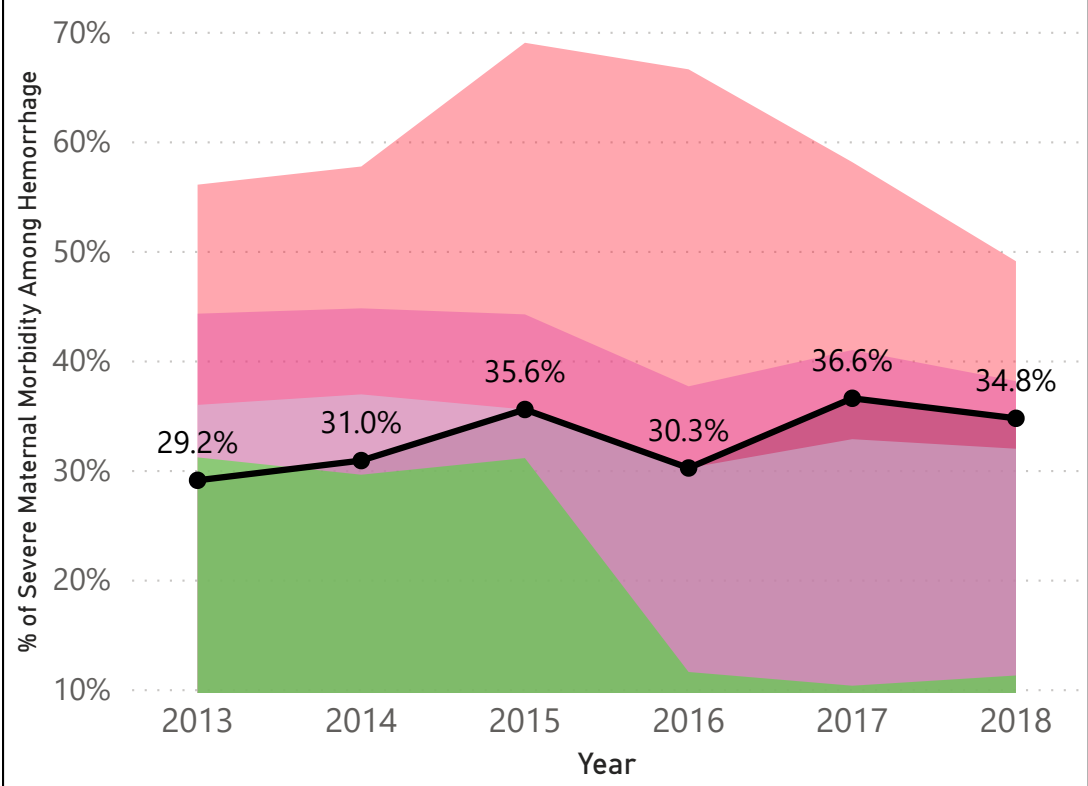
Your hospital is among...

- The highest 25% of hospitals
- The highest 50% of hospitals
- The lowest 50% of hospitals
- The lowest 25% of hospitals

Your Hospital Report						
	2013	2014	2015	2016	2017	2018
Percent	8.24%	9.18%	8.83%	8.87%	9.46%	8.76%
Numerator	415	491	525	535	554	540
Denominator	5034	5348	5946	6034	5855	6165

All delivery Hospitals						
	2013	2014	2015	2016	2017	2018
Percent	4.92%	5.30%	5.53%	4.90%	5.19%	5.26%
Numerator	5126	5641	6040	5406	5715	5729
Denominator	104136	106336	109180	110246	110109	108943

### % of Severe Maternal Morbidity Among Obstetric Hemorrhage For All Level III NICU Hospitals in Florida

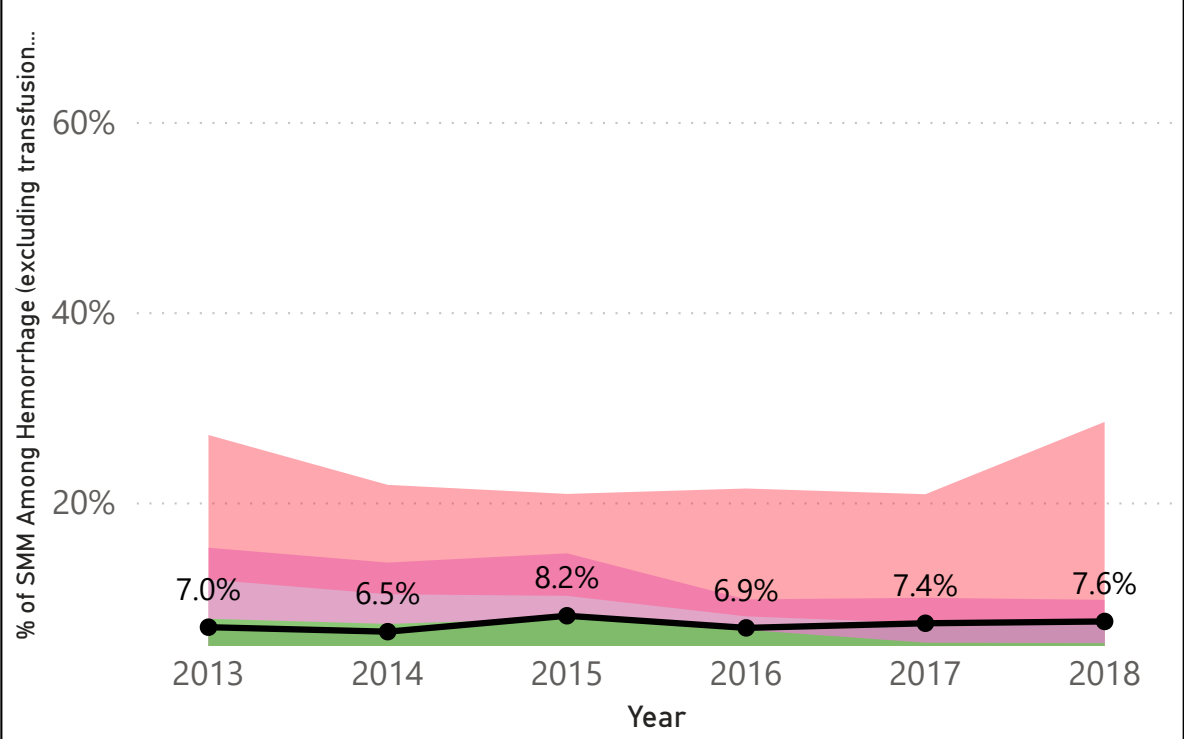


● Your Hospital %

Your hospital is among...

- The highest 25% of hospitals
- The highest 50% of hospitals
- The lowest 50% of hospitals
- The lowest 25% of hospitals

### % of Severe Maternal Morbidity Among Obstetric Hemorrhage, Not Including Blood Transfusions For All Level III NICU Hospitals in Florida



#### Your Hospital data

	2013	2014	2015	2016	2017	2018
Percent	29.2%	31.0%	35.6%	30.3%	36.6%	34.8%
Numerator	121	152	187	162	203	188
Denominator	415	491	525	535	554	540

#### All delivery Hospitals

	2013	2014	2015	2016	2017	2018
Percent	34.6%	34.6%	35.7%	31.7%	32.2%	29.5%
Numerator	1773	1949	2154	1712	1840	1689
Denominator	5126	5641	6040	5406	5715	5729

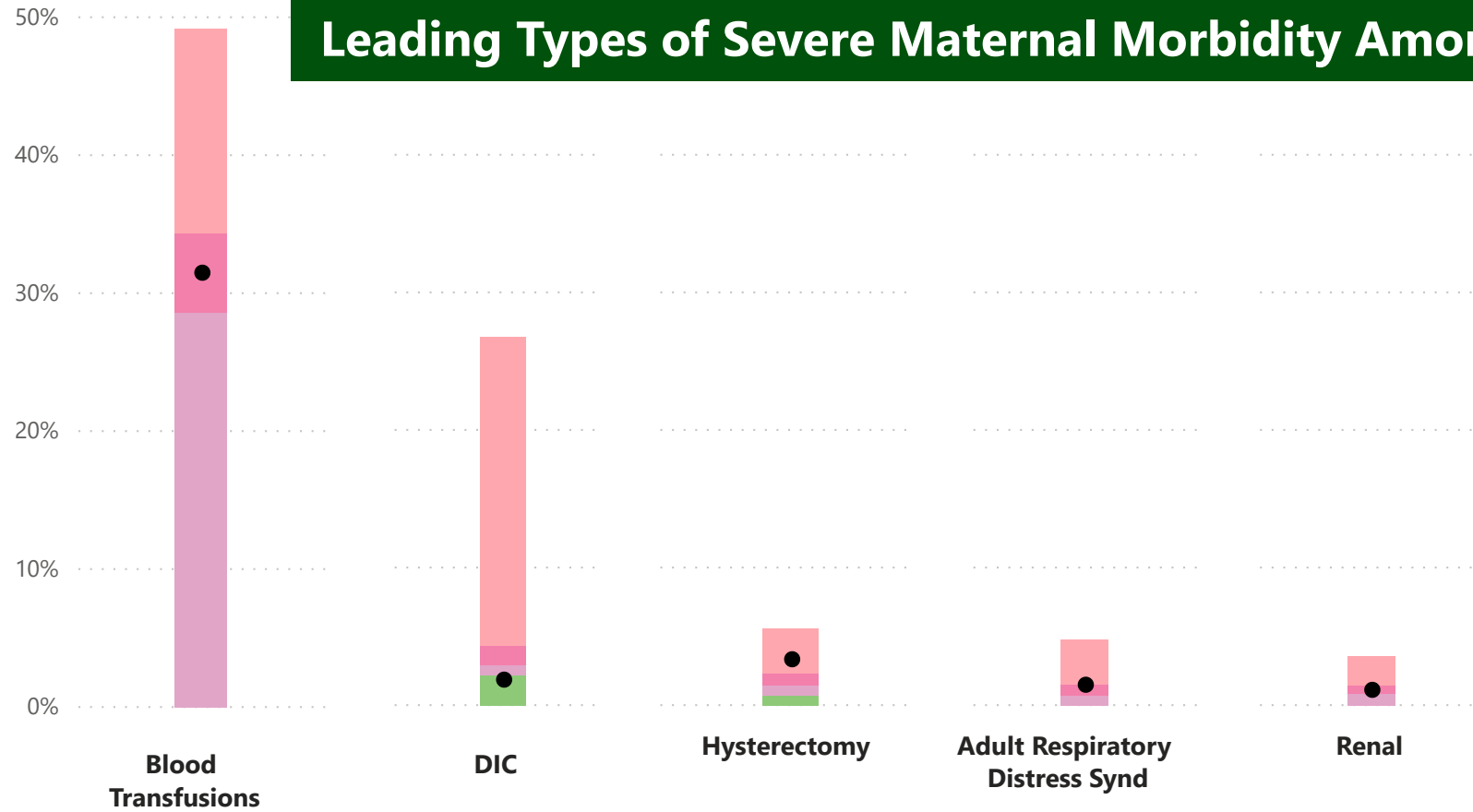
#### Your Hospital Data

	2013	2014	2015	2016	2017	2018
Percent	7.0%	6.5%	8.2%	6.9%	7.4%	7.6%
Numerator	29	32	43	37	41	41
Denominator	415	491	525	535	554	540

#### All delivery Hospitals

	2013	2014	2015	2016	2017	2018
Percent	10.4%	9.8%	10.4%	8.8%	8.1%	7.7%
Numerator	535	552	627	477	465	441
Denominator	5126	5641	6040	5406	5715	5729

# Leading Types of Severe Maternal Morbidity Among Women With Obstetric Hemorrhage



● Your Hospital %

Your hospital is among...

- The highest 25% of hospitals
- The highest 50% of hospitals
- The lowest 50% of hospitals
- The lowest 25% of hospitals

## Your Hospital

Blood Transfusions		DIC		Hysterectomy		ARDS		Renal	
	2018		2018		2018		2018		2018
% BT	31.48%	%	1.85%	%	3.33%	%	1.48%	%	1.11%
BT numerator	170	N	10	N	18	N	8	N	6
BT denominator	540	D	540	D	540	D	540	D	540

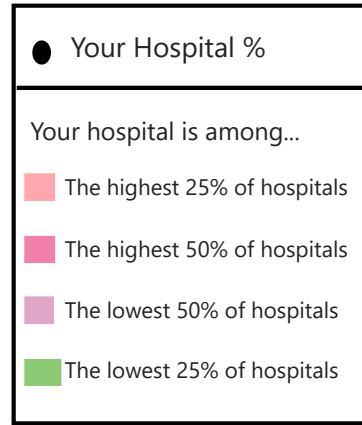
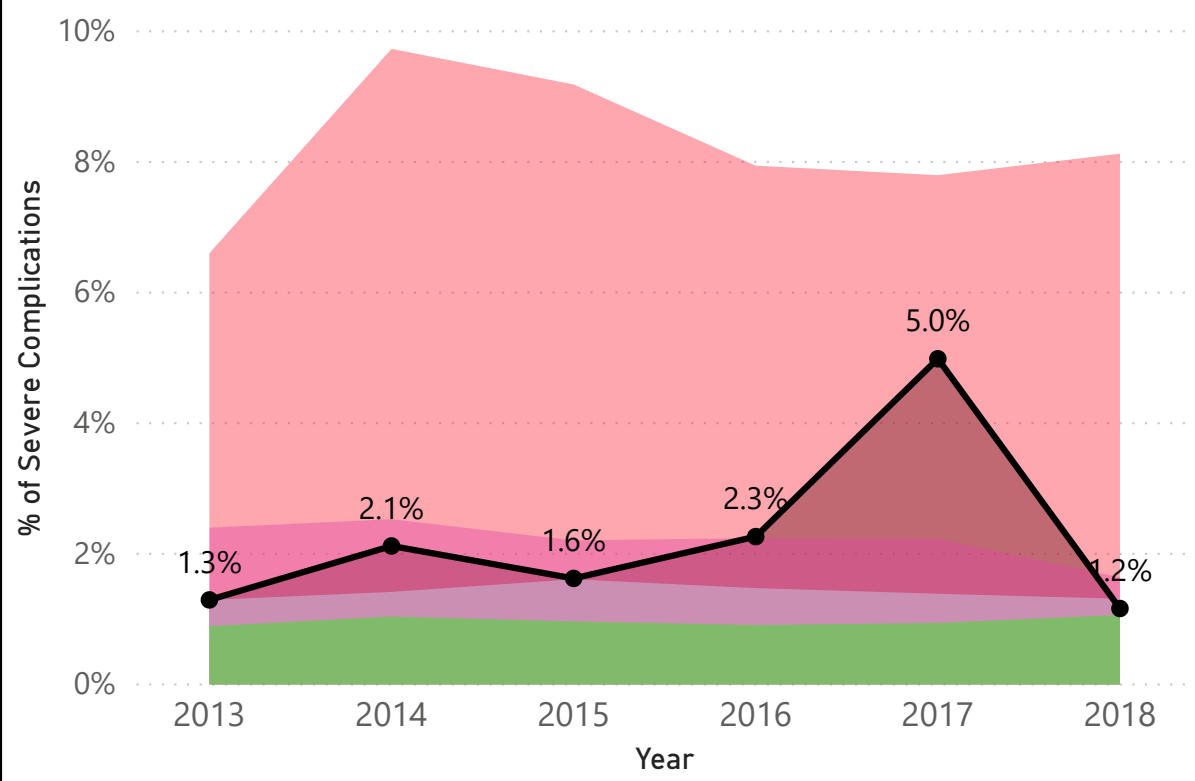
## All Delivery Hospitals SMM by Type

% SMM Hem BT	% DIC	% Hysterectomy	% ARDS	% Renal Fail
24.98%	3.33%	1.95%	1.06%	1.10%

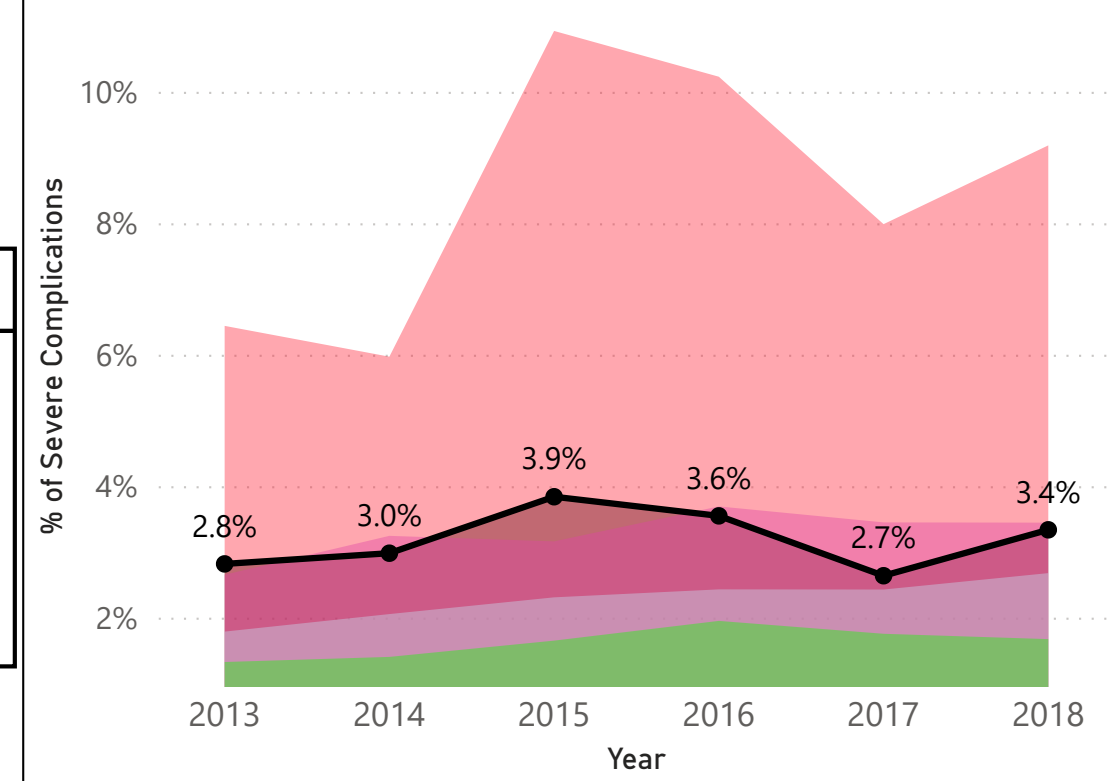
# Women with Hemorrhage  
(all hospitals denominator)

5729

### % Severe Unexpected Complications of the Newborn For All Level III NICU Hospitals



### % Moderate Unexpected Complications of the Newborn For All Level III NICU Hospitals



#### Your Hospital Report

	2013	2014	2015	2016	2017	2018
Percent	1.29%	2.12%	1.62%	2.26%	4.99%	1.16%
Numerator	37	75	64	87	186	34
Denominator	2858	3537	3942	3843	3730	2923

#### All Delivery Hospitals

	2013	2014	2015	2016	2017	2018
Percent	1.81%	1.94%	1.80%	1.79%	1.95%	1.68%
Numerator	1357	1471	1342	1235	1304	808
Denominator	75021	75668	74663	68953	66912	48025

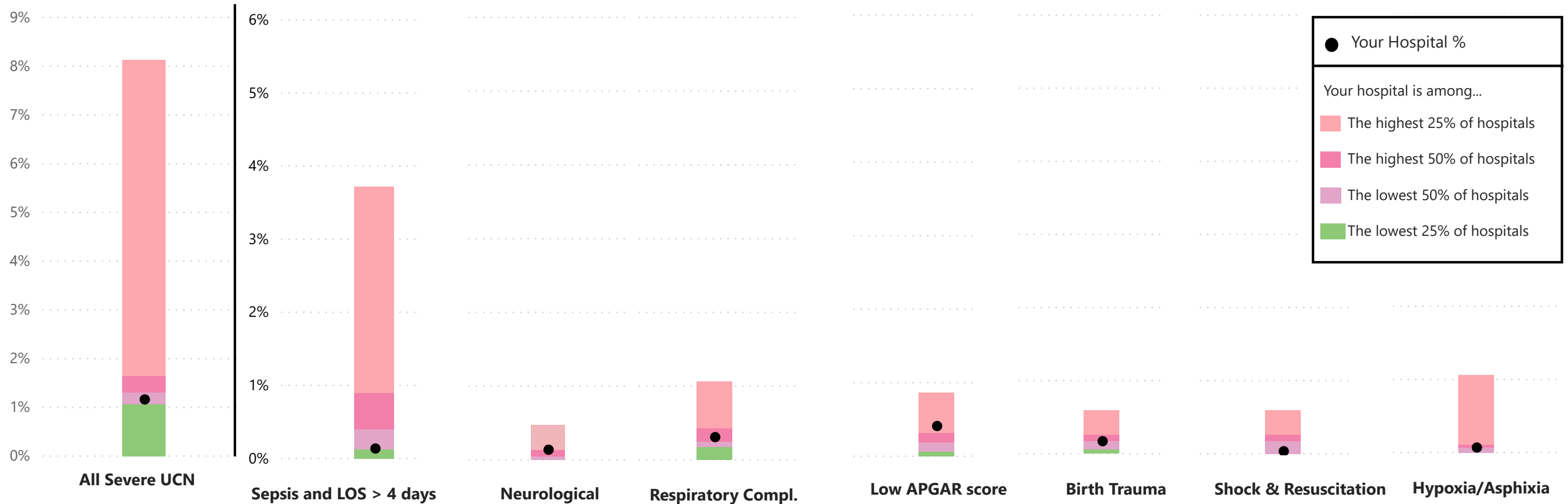
#### Your Hospital Report

	2013	2014	2015	2016	2017	2018
Percent	2.83%	3.00%	3.86%	3.56%	2.65%	3.35%
Numerator	81	106	152	137	99	98
Denominator	2858	3537	3942	3843	3730	2923

#### Your Hospital Report

	2013	2014	2015	2016	2017	2018
Percent	2.15%	2.22%	2.60%	2.88%	2.78%	2.99%
Numerator	1610	1677	1938	1986	1860	1434
Denominator	75021	75668	74663	68953	66912	48025

# Leading Types of Severe Unexpected Newborn Complications (UNC)

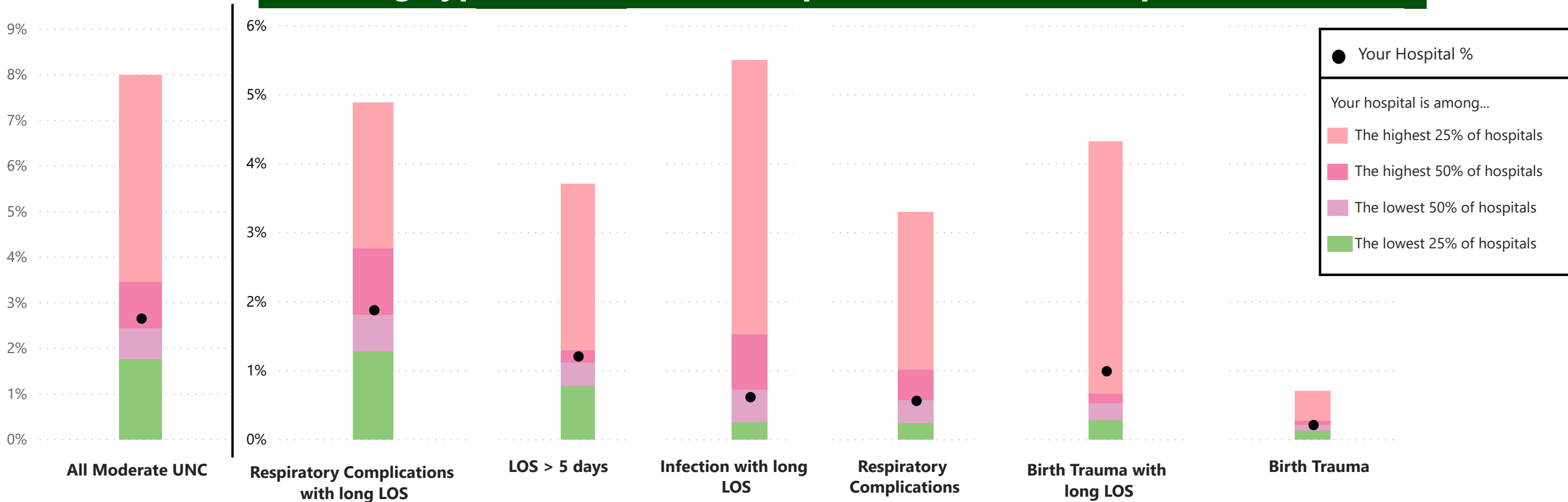


Your Hospital	
All Severe UNC	2018
Percent	1.16%
Numerator	34
Denominator	2923
Sepsis and LOS > 4d	2018
Percent	0.14%
Numerator	4
Denominator	2923
Neurological	2018
Percent	0.14%
Numerator	4
Denominator	2923
Respiratory Compl.	2018
Percent	0.31%
Numerator	9
Denominator	2923
Low APGAR score	2018
Percent	0.41%
Numerator	12
Denominator	2923
Birth Trauma	2018
Percent	0.17%
Numerator	5
Denominator	2923
Shock & R.	2018
Percent	0.03%
Numerator	1
Denominator	2923
Hypoxia/Asphixia	2018
Percent	0.07%
Numerator	2
Denominator	2923

All Delivery Hospitals SMM by Type							
Year	% Severe UNC	% Sepsis	% Neurological	% Resp. Complications	% Low APGAR	% Birth Trauma	% Hypoxia
2018	1.68%	0.58%	0.10%	0.32%	0.22%	0.18%	0.11%

Total term Newborns* (UNC state-wide denominator)
48025
22

# Leading Types of Moderate Unexpected Newborn Complications (UNC)



## Your Hospital

All Moderate UNC		Respiratory Complication w/ long LOS		Long LOS (>5days)		Infection with Long LOS		Respiratory Complication		Birth Trauma with Long LOS		Birth Trauma	
Percent	2.65%	Percent	1.9%	Percent	1.21%	Percent	0.62%	Percent	0.56%	Percent	0.99%	Percent	0.21%
Numerator	99	Numerator	70	Numerator	45	Numerator	23	Numerator	21	Numerator	37	Numerator	8
Denominator	3730	Denominator	3730	Denominator	3730	Denominator	3730	Denominator	3730	Denominator	3730	Denominator	3730

## All Delivery Hospitals SMM by Type

Year	% Moderate UCN	% Respiratory LLOS	% Long LOS	% Infection LLOS	% Respiratory	% Birth Trauma LLOS	% Birth Trauma
2017	2.78%	2.1%	1.13%	0.90%	0.76%	0.52%	0.21%

**Total term Newborns\*  
(UNC state-wide denominator)**

**66912**

# Data Sources

## 1. Birth Certificate

- B. Low-Risk Cesarean Deliveries - Quarterly and Yearly
- D. Antenatal Corticosteroid

## 2. Inpatient Hospital Discharge

- E. Severe Maternal Morbidity
- F. Severe Hypertension/Preeclampsia
- G. Obstetric Hemorrhage

## 3. Linked Birth Certificate and Inpatient Hospital Discharge

- A. Non-medically Indicated (Elective) Early-term Deliveries
- C. Induction of Labor and Failed Inductions of Labor
- H. Unexpected Complications of the Newborn

Questions? email us at [fpqc@usf.edu](mailto:fpqc@usf.edu)