



USF College of Medicine
 Center for Hospice, Palliative Care & End-of-Life Studies
 12901 Bruce B Downs Blvd. MDC19
 Tampa, FL 33612
 Tel. (813) 974-2460 * Fax (813) 974-2580
<http://www.eolcenter.usf.edu>



2012 ANNUAL REPORT





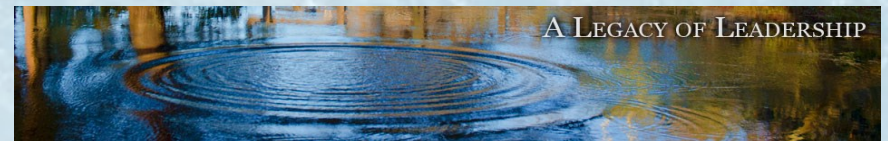
HOWARD TUCH, M.D., M.S.

Co-Chair, Practice Review Course

**Assistant Professor, USF Division of Palliative Medicine,
Medical Director, Hospice and Palliative Medicine,
Tampa General Hospital**

Dr. Tuch is Board Certified in Internal Medicine, Geriatric Medicine and in Hospice and Palliative Medicine. He earned his medical degree from the University of North Carolina. His Internal Medicine Residency was completed at the Johns Hopkins School of Medicine, as well as, his Geriatric Fellowship.

Dr. Tuch's professional experience includes more than twenty years of clinical/administrative experience with an earlier focus on research. Dr. Tuch is also currently an *Expert Medical Consultant*, quality of care in nursing home, *Network Project Member*, Memorial Sloan Kettering Cancer Center, *Member*, Florida Health Care Association Council on Ethics, *Member*, Speaker's Bureau Purdue-Frederick Corporation, *Member*, Institutional Innovation Task Force, Last Acts, The Robert Wood Johnson Foundation, *Physician Consultant*, Florida Health Care Association, American Academy of Hospice and Palliative Medicine, *Medical Consultant* National Hospice and Palliative Care Organization, *Physician Advocate*, American Academy of Hospice and Palliative Medicine.



Mary J. Labyak, died on February 4, 2012. She was president and CEO of Pinellas County's community hospice, Suncoast Hospice, nearly from the time it was founded 35 years ago. Known nationally and internationally as a visionary in hospice and palliative care, Mary was one of the social architects credited for shaping compassionate end-of-life care in the United States. She was recognized in hospice and legislative circles as a staunch advocate on behalf of dying persons and their families, always encouraging advances and innovations in end-of-life care. She, along with other hospice pioneers, convinced Congress to adopt the hospice Medicare benefit.

She was a founder of Suncoast Solutions, a software company that has enhanced her vision of quality hospice care and serves one in four hospice patients throughout our 50 states. She was called upon for countless leadership roles, served as chair of the National Hospice & Palliative Care Organization (NHPCO) and Florida Hospices & Palliative Care Organization (FHPCO). At the time of her death, she was chair of the National Hospice Foundation (NHF) and co-chair of the capital campaign for the National Center for Care at the End of Life. She was appointed to the Florida Panel on End-of-life Care, established by the state legislature and active on the boards and committees of many local and national organizations, such as Duke University End of Life Institute and the American Academy of Medical Administrators. She was the recipient of numerous awards, including NHF's prestigious Healthcare Architect award in 2011.

Mary was well known for her wisdom, wit and down-to-earth approach in all aspects of her life. She leaves a rich legacy in her body of work and will be greatly missed.



Tuch, H. (September, 2012) *Discontinuation of Technological Support*. Presented at the Hospice & Palliative Medicine Practice Review Course, Center for Hospice, Palliative Care, & End-of-Life Studies. Tampa, FL..

Tuch, H. (September, 2012) *Palliative Sedation*. Presented at the Hospice & Palliative Medicine Practice Review Course, Center for Hospice, Palliative Care, & End-of-Life Studies. Tampa, FL..

Volicer, L. (March, 2012) *Depression in advanced dementia AND AMDA tool kit for starting and maintaining ethics committees in long-term care*. Presented at American Medical Directors Association Long-Term Care Medicine, San Antonio, TX.

Volicer, L. (November, 2012) *Behavioral symptoms of dementia and end-of-life care*. Presented at Care for the Caregivers Symposium, Sun City Center, FL.

Volicer, L. (October, 2012) *Management of advanced dementia*. Presented by 19th International Congress on Palliative Care, Montreal, Canada.

Wang, H., Kroenke, K., Wu, J., Tu, W., Theobald, D., Rawl, S. M. (September, 2012) *Predictors of cancer-related pain improvement over 12 Months*. Paper presented at the National State of the Science Congress in Nursing Research, Washington, D.C.

Wang, H., Skinner, C. S., Champion, V. L., Springston, J., Perkins, S. M., Tong, Y., Krier, C., Gebregziabher, N, Christy, S., Rawl, S. M. (September, 2012) *Factors predicting stage of adoption for fecal occult blood testing and colonoscopy among non-adherent African Americans*. Paper presented at the National State of the Science Congress in Nursing Research, Washington, D.C.

Wang, H., Skinner, C.S., Champion, V.L., Springston, J., Perkins, S.M., Tong, Y., Krier, C., Gebregziabher, N, Christy, S., Rawl, S. M. (May, 2012) *Colorectal cancer screening in non-adherent Black Americans*. Poster presented at the 8th Biennial Conference - Cancer, Culture and Literacy: Advancing Communications, Clearwater, FL.

Woods, D. R. (November, 2012) *Delirium in hospice care: Recognition and management, an interdisciplinary approach*. Presented at the NHPCO 13th Clinical Team Conference. Lake Buena Vista, FL..

Woods, D. R. (October, 2012) *Best care practices in the geriatrics continuum: The art and science of estimating prognosis*. Florida Medical Directors Association Annual Symposium. Lake Buena Vista, FL.

Woods, D. R. (July, 2012) *Cardiopulmonary anatomy and physiology: Review for ICD-10 coding*. Presented at the 2012 Florida Health Information Management Annual Convention (FHIMA). Lake Buena Vista, FL.



RONALD SCHONWETTER, M.D.
Co-Chair, Practice Review Course
Chief Medical Officer, Chapters Health System
Adjunct Professor, USF Division of Geriatric Medicine

Dr. Schonwetter graduated from the University of South Florida (USF) College of Medicine in 1984. He completed his Internal Medicine residency and Geriatric Medicine fellowship at Baylor College of Medicine from 1984-1989. He is board certified in Internal Medicine and Hospice and Palliative Medicine. He subsequently has had over 20 years of experience working in the hospice and palliative medicine industry, most recently holding the title of Chief Medical Officer at Chapters Health System in Tampa, Florida. Formerly, he was a Professor, Division Director and Fellowship Program Director for Geriatric Medicine at USF. He was the founding Academic Director and currently is the Community Director of USF's Center for Hospice, Palliative Care, and End of Life Studies. Dr. Schonwetter served as Chairman, American Board of Hospice and Palliative Medicine and President, American Academy of Hospice and Palliative Medicine.

Community Director

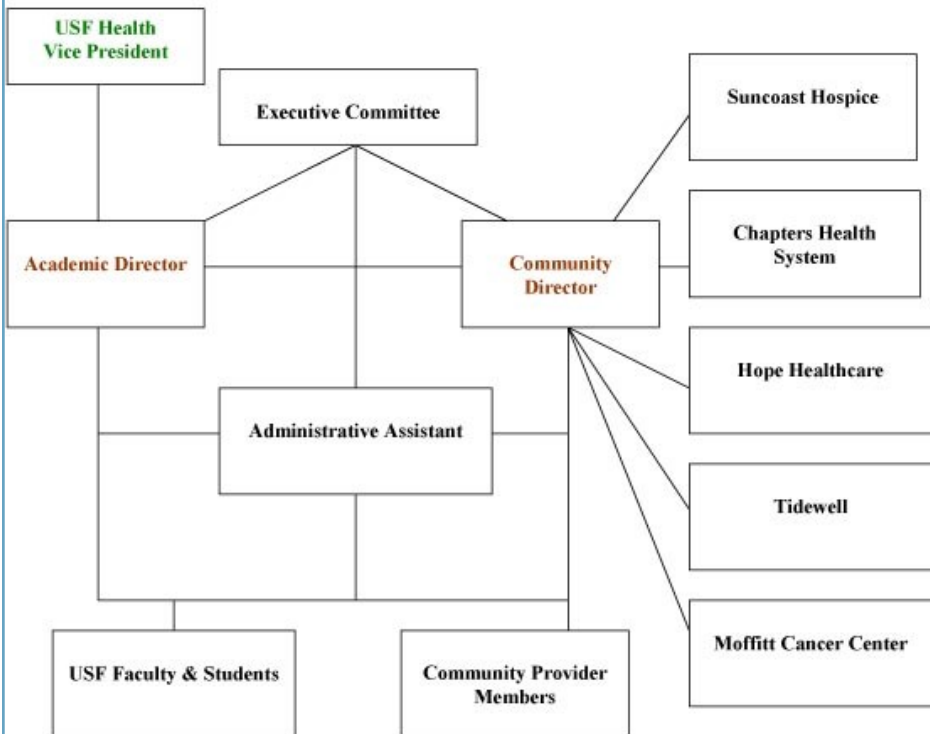


Our Mission

The mission of the Center for Hospice, Palliative Care and End-of-Life Studies at USF is to optimize care and systems of care for patients and families faced with non-curable diseases by:

- ◇ Generating new knowledge through interdisciplinary research;
- ◇ Using that knowledge to educate health and human service professionals, and
- ◇ Influencing public policy that supports quality end-of-life

The USF Center for Hospice, Palliative Care & End-of-Life Studies



Rajasekhara, S. (September, 2012) *Urgent Medical Conditions*. Presented at the Hospice & Palliative Medicine Practice Review Course, Center for Hospice, Palliative Care, & End-of-Life Studies. Tampa, FL.

Schonwetter, R. (September, 2012) *Approach to Care*. Presented at the Hospice & Palliative Medicine Practice Review Course, Center for Hospice, Palliative Care, & End-of-Life Studies. Tampa, FL.

Stellrecht, H., Bergstrom, J. (November, 2012) *Fostering exceptional team performance through best practice care steps*. Presented at the National Hospice and Palliative Care Organization (NHPCO), 13th Clinical Team Conference and Pediatric Intensive. Lake Buena Vista, FL.

Stellrecht, H., Bergstrom, J. (December, 2012) *Fostering exceptional team performance through best practice care steps*. Presented at the Suncoast Solutions Users Conference, Clearwater, FL..

Stellrecht, H., Lascoux, S. (October, 2012) *Providing hospice services in nursing homes*. Presented at the National Conference Leading Age Annual Meeting & Exposition. Denver, CO.

Stewart J. T., Sheyner I., Lewis D.C., George L. V., Mattox K. M., Stover K. T. (May, 2012) *Weight loss associated with switching cholinesterase inhibitors*. American Geriatrics Society Annual Meeting, Seattle, WA.

Stewart J. T. (June, 2012) *Sex in the elderly*. Presented at the University of South Florida Geriatric Education Center, Tampa, FL..

Stewart, J. T. (June, 2012) *Palliative care in dementia*. Presented at the Florida Geriatrics Society annual meeting, Tampa, FL.

Stewart, J. T. (January, 2012) *Dementia*. Presented at the VA Outpatient Clinic, Bradenton, FL..

Stewart, J. T. (February, 2012) *Frontal/subcortical dementia*. Presented at the Gainesville VA Medical Center, Gainesville, FL.

Stewart J. T. (October, 2012) *Psychiatric care at the end-of-life*, Presented at the St. Petersburg College Geriatric Workshop, Clearwater, FL..

Dilling T. J., Extermann M., Kim, J., **Thompson L. M.**, et al., (June, 2012). Phase II study of concurrent cetuximab (C225) plus definitive thoracic radiotherapy (XRT) followed by adjuvant docetaxel in poor prognosis patients with locally advanced non-small cell lung cancer (LA-NSCLC). Abstract accepted for presentation at the American Society of Clinical Oncology Annual Meeting 2012. Chicago, IL.



Jones, S. (March, 2012) *The Shining star program Part II: Evolution of change.* National Hospice and Palliative Care Organization's (NHPCO) Management & Leadership Conference, National Harbor, MD.

Lubrano-DiCiccione, B. (September, 2012) *Psychiatry & Neurological Problems at the end-of-life.* Presented at the Hospice & Palliative Medicine Practice Review Course, Center for Hospice, Palliative Care, & End-of-Life Studies. Tampa, FL..

McMillan, S. (March, 2012) *Interventions for caregivers in hospice care.* Presented at Pre-Congress Conference in Newcastle-on-Tyne, London, England.

McMillan, S. (March, 2012) *Symptom management in palliative care: Findings from research.* Presented at 9th Palliative Care Conference, Newcastle-on-Tyne, London, England.

McMillan, S. (November, 2012) *Trajectory of opioid-induced constipation in cancer.* Presented at Oncology Nursing Society Connections Conference, Phoenix, AZ..

Meng, H., Dobbs, D., Wang, S., Hyer, K. (June, 2012) *Impact of hospice use on health care expenditures among assisted living residents.* Poster presented at Academy Health annual meeting, Orlando, FL.

Meng H., Dobbs D., Hyer K. (May, 2012) *Impact of hospice enrollment status on health care expenditures at the end-of-life among assisted living residents.* Presented at Aging and Social Security International Conference, Hangzhou, China.

Orloff, S. (November, 2012) *Pediatric concurrent care. Putting theory into practice.* Presented at the 13th NHPCO's Clinical Team Conference. Lake Buena Vista, FL..

Poonkasem, K. J. (November, 2012) *Medical acupuncture: A non-pharmacologic approach to symptom management at the end-of-Life.* Presented at the National Hospice and Palliative Care Organization (NHPCO), 13th Clinical Team Conference and Pediatric Intensive. Lake Buena Vista, FL.

Poonkasem, K. J. (September, 2012) *Complementary & alternative medicine in hospice & palliative medicine.* Presented at the Hospice & Palliative Medicine Practice Review Course, Center for Hospice, Palliative Care, & End-of-Life Studies. Tampa, FL.

Proch, M. L. (October, 2012) *Do you trust your team? Does your team trust you?"* National Council of Hospice and Palliative Professionals's (NCHPP), Executive Committee Panel Presentation, San Diego, CA.



Who are we?

The Center for Hospice, Palliative Care and End-of-Life Studies at USF is an innovative research and education center in that we are an equal partnership between an academic medical center/research one university and community provider agencies. Our approach to research is collaborative – in many cases university researchers approach community agencies as sites to do research and have access to patient populations; in our work at the Center we conceptualize, conduct and disseminate research findings as partners.

The Center partnership includes founding sponsors: USF Health; Suncoast Hospice; & Chapter's Health System, Inc. The sponsor partners: Moffitt Cancer Center; Hope Healthcare Services; and Tidewell.

The Center is a fully integrated partnership between community organizations and USF in terms of governance, financial support, and leadership. Each of the Center's partners is described briefly and more information can be found by visiting each organization's website.



Goals:

Long-term

Become nationally known as a center for excellence in research and education in palliative and hospice care and end of life studies.

Research

- ◆ Facilitate research aimed at improving quality of care and systems of care for patients and families facing advanced non-curable diseases.
- ◆ Assist researchers to explore and develop projects that may be pursued through intramural or extramural funding.
- ◆ Link researchers from varied disciplines whose research and teaching would be complemented by working together on important research questions related to palliative care and end of life issues.
- ◆ Seek opportunities to develop and test relevant measurement tools.



- ◆ Develop a uniform database at multiple sites to foster multicenter trials.
- ◆ To use research results to influence public policy that is supportive of quality health care at the end of life.

Education

- ◆ Participate in research utilization and dissemination through presentations, publications, and classroom teaching.
- ◆ Involve learners at all levels in the activities of the Center as appropriate.
- ◆ Enhance classroom and continuing education programs related to palliative care and end of life issues.
- ◆ Promote evidence-based practice in the education of students and providers of health care.
- ◆ Provide on-going education for center members utilizing strengths and research outcomes of center members.

Dobbs, D., Frankowski, A. C., Zimmerman, S., Perez, R., Nemeč, M. (November, 2012) *Exercising autonomy at the end of life: Decision-making in assisted living*. Poster presented at the Gerontological Society of America, San Diego, CA.

Black, K., Dobbs, D., Young, T. (November, 2012) *Community-dwelling older adults' perceptions of dignity in the course of everyday living: Meaning, supports, challenges, and opportunities*. Poster presented at the Gerontological Society of America, San Diego, CA.

Ellis, C. (November, 2012) *Death was not the problem: Narrating and analyzing stories of survival in the Warsaw Ghetto*. Presented at George Herbert Mead Lecture Series Featured Speaker at National Communication Association, co-sponsored with Society for the Study of Symbolic Interaction. University of South Florida, Tampa, FL.

Emmett, C. (November, 2012) *Exploring the advance care planning experiences among persons with mild cognitive impairment: Individual and spousal perspectives*. Doctoral presentation at the University of South Florida, Tampa, FL.

Frahm, K. A., Brown, L. M., Gibson, M. (March, 2012) *End-of-life care in nursing home settings during disasters*. Presented at the National Hurricane Conference, Orlando, FL.

Gibson, V. (August, 2012) *Increasing the effectiveness of your volunteer training program*. Virtual Volunteer Conference, NHPCO

Perkins, E. A., **Haley, W. E.** (July, 2012) *Emotional and tangible reciprocity in older caregivers of adults with intellectual disabilities*. Presented at the World Congress, International Association for the Scientific Study of Intellectual Disabilities, Halifax, Nova Scotia, Canada.

Hahn, E., Andel, R., **Haley, W. E.** (November, 2012) *Interpersonal daily stressors and psychological well-being in persons with mild cognitive impairment*. Presented at the Gerontological Society of America meetings, San Diego, CA.

Park, N. S., Jang, Y., Lee, B. S., **Haley, W. E.**, Chiriboga, D. A. November, 2012) *Loneliness, social engagement and depressive symptoms in older Korean Americans: Gender differences*. Presented at the Gerontological Society of America meetings, San Diego, CA.

Perkins, M., Clay, O. J., **Haley, W. E.**, Wadley, V. G., Grant, J. S., Pulley, L., Roth, D., Race, L. (November, 2012) *Stroke, and the CES-D: Caring for adults recovering from the effects of stroke (CARES) study*. Presented at the Gerontological Society of America meetings, San Diego, CA.



Black, K., & Ziemba, N. (March, 2012) *CARES Project: Lessons learned*. Presented at the Annual Meeting for Caregiving Projects funded by the Harry and Jeanette Weinberg Foundation. Washington, D.C.

Bruno, S. (March, 2012) *Keeping quality hospice employees: Educating more with less*. Presented at National Hospice and Palliative Care Organization Management and Leadership Conference, National Harbor, MD.

Bruno, S. (March, 2012) *Improving family satisfaction by meeting the needs of adult daughters*. Presented at the Hospice & Palliative Care Network of Maryland.

Bruno, S. (December, 2012) *Comprehensive assessment*. Webinar presentation at the Suncoast Solutions Users Conference, Clearwater, FL.

Bruno, S. (June, 2012) *Interdisciplinary Team (IDT) – It's more than a meeting*. HospiScript, Inc 2012 Webinar series.

Carrion, I. V., & Nedjat-Haiem, F. R. (November, 2012) *Overcoming qualitative methods challenges with minority older men: Social work research education implications*. Paper presented at Council of Social Work Education Annual Program Meeting, Washington, D.C.

Carrion, I. V., Nedjat-Haiem, F. R., & Marquez, D. X. (November, 2012) *Older Latino men with cancer: A study of their treatment decisions*. Paper presented at The Gerontological Society of America's 65rd Annual Scientific Meeting, San Diego, CA.

Carrion, I. V., Nedjat-Haiem, F. R., Marquez, D. X. (November, 2012) *Understanding disparities in end-of-life and treatment decision making among diverse race groups*. Paper presented at The Gerontological Society of America's 65rd Annual Scientific Meeting, San Diego, CA.

Nedjat-Haiem, F. R., **Carrion, I. V.** (November, 2012) *A Case study: An older Latino immigrant's experience with colorectal cancer*. Paper presented at The Gerontological Society of America's 65rd Annual Scientific Meeting, San Diego, CA.

Nedjat-Haiem, F. R., **Carrion, I. V., Cribbs, K., Lorenz, K.** (January, 2012) *Perceptions of patient advocacy in end-of-life care with vulnerable populations*. Poster presented at The Society for Social Work Research 16th Annual Conference, Washington, D.C.

Holup, A., Dobbs, D., Meng, H., Hyer, K. (November, 2012) *Predictors of electronic health record use in residential care facilities: Evidence from the 2010 National Survey of Residential Care Facilities*. Paper presented at the Gerontological Society of America, San Diego, CA.

Activities:

Research

- ◆ Provide research funds for pilot studies with the potential to improve quality of care and systems of care for patients and families facing advanced non-curable diseases and families experiencing bereavement.
- ◆ Provide research funds for pilot studies with high potential for extramural grant funding in palliative care and end of life issues.
- ◆ Provide funds for doctoral students interested in conducting dissertation research focused on palliative and end of life issues.

Education

- ◆ Provide state of the art educational opportunities for hospice staff, palliative care professionals, students and researchers interested in palliative care and end of life issues.
- ◆ Sponsor lecture series focused on palliative care and end of life issues for faculty, students, hospice and palliative care staff.
- ◆ Increase formal academic course offerings on palliative care and end-of- life issues.
- ◆ Improve communication between faculty members, palliative care professionals, and graduate students interested in palliative care and end of life issues and serve as a forum to assist researchers in exploring and developing studies that may be pursued through intramural or extramural funding.
- ◆ Strengthen collaborative efforts with organizations providing end of life care including hospices and other palliative care programs.
- ◆ Provide educational conferences for health care providers to improve palliative and end-of-life care.



EXECUTIVE COMMITTEE

The Center is governed by an Executive Committee representing interdisciplinary community providers and university faculty from various disciplines that represent the continuum of care utilized in hospice and palliative care.

ACADEMIC PARTNERS

Howard Tuch, MD, MS
Center Academic Director
Director, TGH Palliative Care Services

Iraida Carrion, PhD, MSW, LCSW
School of Social Work
University of South Florida

Susan McMillan, PhD, ARNP, FAAN
College of Nursing
University of South Florida

Hana Osman, PhD
College of Public Health
University of South Florida

Lori A. Roscoe, PhD
College of Arts and Science
University of South Florida

Robert Walker, MD
Division of Medical Ethics, Humanities
and Palliative Care, College of Medicine
University of South Florida

Staff:
Lourdes Rodriguez, BBAM
Center Coordinator
University of South Florida

COMMUNITY PARTNERS

Ronald Schonwetter, MD, FACP, FAAHPM
Center Community Director
Chapters Health System

Robert Arnold, EdD, MA, BCPC, CAC
Suncoast Hospice

Samira Beckwith, MSW, FACHE
Hope Healthcare Service

Sehwan Kim, PhD
Chapters Health System

Stephen Leedy, MD
Tidewell Hospice

Stacy Orloff, EdD., LCSW
Suncoast Hospice

Lora Thompson, MD
Moffitt Cancer Center & Research Institute

annual meeting of the International Federation on Ageing (IFA), Prague, Czech Republic.

Beckwith, S. K. (March, 2012) *Expand your reach to serve your community.* Presented at the MHPCA Midwest Conference on Palliative and End of Life Care. Jefferson City, MO.

Beckwith, S.K. (March, 2012) *Program development in a changing health care system.* Key Note Speaker at the MHPCA Midwest Conference on Palliative and End of Life Care. Jefferson City, MO.

Beckwith, S.K. (May, 2012) *The hope circle of care.* Presented at the Faith Presbyterian Church Community Forum, Fort Myers, FL.

Beckwith, S.K. (June, 2012) *The hope circle of care.* Presented at the Uncommon Friends Foundation, Fort Myers, FL.

Beckwith, S.K. (July, 2012) *Hope PACE: Innovative healthcare for Collier County's elderly.* Presented at the Northern Trust Bank of Florida NA President's Luncheon, Fort Myers, FL.

Black, K. (October, 2012) *Framing the issues. Last will and embezzlement: Protecting yourself and others from exploitation.* Presented at Forum, Sarasota, FL.

O'Neil, K., Concotelli, J. & **Black, K.** (September, 2012) *The road ahead.* Invited speaker at the Optimum Life Caregiver Forum, Brookdale Senior Living, Sarasota, FL.

Black, K. (September, 2012) *Evaluation findings: Sarasota CARES.* Jewish Children and Family Services. Sarasota, FL.

Black, K. (May, 2012) *Planning in advance for future care needs: Considerations for practice with older clients and their families.* Invited speaker. Sarasota County Bar Association, Estate Planning & Probate Section, Sarasota, FL.

Black, K., Dobbs, D.J., & Young, T. (November, 2012) *Community-dwelling older adults' perceptions of dignity: Core meanings, supports, challenges, and opportunities.* Presented at the Gerontological Society of America Annual Meeting. San Diego, CA.

Emmet, C. P., Dobbs, D. J. & Black, K. (November, 2012) *Advance care planning among persons with mild cognitive impairment.* Gerontological Society of America Annual Meeting. San Diego, CA.

Black, K., & Ziemba, N. (March, 2012) *Sarasota CARES: Program implementation and evaluation.* Presented at the American Society on Aging Annual Meeting. Washington, D.C.



Arnold, R. L. (September, 2012) *Psychosocial and spiritual issues in Hospice and Palliative Care: Functional assessment and intervention*. Presented at the AAHPM Hospice and Palliative Care Practice Review Course, the Center for Hospice, Palliative Care and End-of-life Studies, University of South Florida, Tampa, FL.

Arnold, R. L. (October, 2012) *Grief/bereavement with older adults: Many losses to share, many ways to care*. Presented at the Bay Pines V.A. Area Agency on Aging, St. Petersburg College Geriatric Workshop: Exploring Critical Competencies for Geriatric, Hospice and Palliative Care St. Petersburg, FL.

Arsenault, T. (2012) *Whose suffering is it? An ethical reflection of the decline and death of a child*. Living with Grief series. End of Life Ethics: A case study approach. 2012 DVD

Ballesteros, D. (May, 2012) *Drug shortages*. Presented at the FNMT (Florida Nuclear Medicine Technologists) 41st Annual Meeting. Orlando, FL.

Ballesteros, D. (August, 2012) *Patient care management track. Facilitator at the 46th Annual Meeting of the Florida Society of Health-Systems Pharmacists (FSHP)*. Orlando, FL.

Becker, M. A., Boaz, T., & Andel, R. (November, 2012) *Predictors of emergency commitment for nursing home residents: The role of resident and facility characteristics*. Paper presented at the annual meeting of the Gerontological Society of America, San Diego, CA.

Becker, M. A., Boaz, T., & Andel, R. (August, 2012) *Emergency commitment of nursing home residents: An emerging concern*. Paper presented at the annual meeting of the Florida Council on Aging, Orlando, FL.

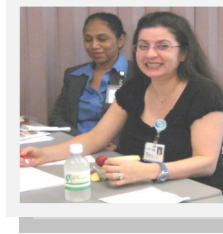
Becker, M. A. (June, 2012) *Health services and pharmacy research: A natural interdisciplinary approach to improve health outcomes*. Paper presented at the annual meeting of the Expand Your Mind Lecture Series (USF Health), Tampa, FL.

Kearns, W. D., Fozard, J., Becker, M., Dion, C., Craighead, J., & Jasiewicz, J. (June, 2012) *Something in the way she moves: Falls and fractal dimension*. Paper presented at the annual meeting of the ISG*ISARC (International Society of Gerontechnology and the International Symposium of Automation and Robotics in Construction) Eindhoven, The Netherlands.

Becker, M. A., & Yegidis, B. (May, 2012). *Understanding the mental health service needs of depressed older adults: A study of age differences in receipt of evidence based practice for major depressive disorder*. Paper presented at the

RESEARCH & TRAINING

Committee



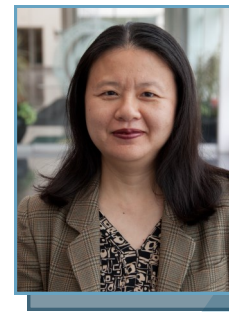
The Center's **Research Committee** is chaired by **Lora Thompson, PhD**, *Clinical Psychologist* at the Moffitt Cancer Center & Research Institute.

Research Committee members include:

- **Kathryn Hyer, PhD**, School of Aging Studies at USF
- **Sehwan Kim, PhD**, Chapters Health System
- **Lori Roscoe, PhD**, Department of Communication, USF
- **Ladislav Volicer, MD, PhD**, School of Aging Studies, USF
- **Kristine Donovan, PhD**, Clinical Psychologist, Moffitt Cancer Center

The Research Committee reviews and makes recommendations to the Executive Committee about applications submitted to the Center for Pilot Research Grant funding and for the Graduate Research Assistantship.

2012 Pilot Grant Recipient



Hsiao-Lan Wang, RN, PhD, College of Nursing was the recipient of the 2012-13 Pilot Grant. The title of her proposal is: "Physical Activity for Advanced Stage Cancer Patients."

The purpose of Dr. Wang's study is to determine whether advanced stage cancer patients can engage in a 4 week home-based tailored physical activity intervention using a Nintendo Wii Fit™ Plus gaming system. An oncology Registered Nurse will make 6 home visits to guide participants through a Wii Fit™ physical fitness assessment and teach participants how to use the system to improve strength, cardiac fitness, range of motion, and balance.

The study aims to assess whether participants are willing and able to use the system and to examine whether the intervention leads to improvements in physical and emotional symptoms, including fatigue, pain, depression, anxiety, and sleep quality. In addition, cortisol, which is a hormone produced in response to stress, will be measured.

It is anticipated that the results of this study could support the use of a non-pharmacological intervention to improve mood and symptoms in advanced cancer patients and lead to further research in this area.



Date	SPEAKER/TOPIC
January 11, 2012	Elizabeth Ollis, RN “Care Coordination Home Telehealth Delivering Innovative Quality Health Care in the Patient’s Home Through Technology”.
February 8, 2012	Abdel Rahman Alkhalouf, RN, MSN (PhD Student) and Graduate Assistant USF College of Nursing. “Professional Quality of Life and Compassion Fatigue: A Hospice Team Intervention Study.”
March 14, 2012	Stanley Terman, MD. Medical Director & CEO of Caring Advocates. Carlsbad, CA. To Avoid Premature Dying Due to The “Dementia Fears”: Why Completing a Living Will to Refuse Oral Food and Fluid Can Be Moral and Effective.
April 11, 2012	Tamara Baker, Liz Vongxiburana, and Kathryn Hyer, School of Aging Studies; Debra Dobbs, Ph.D. Assistant Professor., College of Behavioral and Community Sciences School of Aging Studies “Certified Nursing Assistants’ Perceptions of Pain Experiences Among Nursing Home Residents.”
May 9, 2012	Cheryl Hamilton, Executive Director, Chapters Health Senior Independence, Inc. and Dr. Coleman Pratt, Medical Director, Chapter Health Senior Independence, Inc. “PACE: A Comprehensive Care Management Model.”
June 13, 2012	Jonathan T. Stewart, M.D. Professor in Psychiatry and Geriatric Medicine, JAHVAH/USF “Palliative Care for Dementia.”
July 11, 2012	Hongdao Meng, MPH, Ph.D. Associate Prof. School of Aging Studies. “Impact of Hospice Use on Public Expenditures at the End of Life among Assisted Living Residents.”
September 12, 2012	Grace Terry, MSW “Culture Change from Death Denial to Life Affirmation: Strategies & Resources.”
October 10, 2012	Robert Arnold, Ed.D, MA, BCPC, CAC. Professional Development Facilitator, Suncoast Hospice. “An Examination of Shared Values, Beliefs and Behaviors of Hospice Professionals: A Ten Year Retrospective and Re-Boot.”
November 14, 2012	Don Schumacher (President of the NHPCO) and Jon Keyserling. “Post-Election Analysis: The Immediate and Future Landscape for Hospices.”
December 12, 2012	Linda J. Rooney, MA, MS, CCC-SLP, FMQAI “Improve Individual Patient Care: Reduce Healthcare Acquired Conditions.” AND CAPC Audio Conference: <u>IPAL-OP: New Frontiers in Outpatient Palliative Care</u>

Research; 27(5), 868-885.

Wang, H., Kroenke, K., Wu, J., Tu, W., Theobald, D., & Rawl, S. M. (2012). Predictors of cancer-related pain improvement. *Psychosomatic Medicine*; 74(6), 642-7.

END OF PUBLICATIONS

Abbott, P. (November, 2012) *The Future of Caring: Engaging the next generation of healthcare professionals.* Presented at the 13th NHPCO Clinical Conference. Lake Buena Vista, FL.

Arnold, R. L. (January, 2012) *Assisting persons dealing with sudden death: Psychological first aid.* Presented at the Pinellas County Critical Incident Stress Management Team Quarterly Training, Largo, FL.

Arnold, R. L. (February, 2012) *Domestic violence training.* Presented at the Pinellas County School Department of Social Work, Largo FL.

Arnold, R. L. (February, 2012) *Ethics and boundaries for Social Workers.* Presented at the Pinellas County School Department of Social Work, Largo FL.

Arnold, R. L. (March, 2012) *Managing caregiver stress: Creating a personal plan of care.* Presented at the Mid-Town Health Council of St. Petersburg 2nd Annual Caregiver Conference, St Petersburg, FL.

Arnold, R. L. (April, 2012) *The Affordable Health Care Act and You: A Panel Discussion.* N.A.A.C.P. Regional Healthcare Conference, St. Petersburg, FL.

Arnold, R. L., Christner, T., & Milne, K. (June, 2012) *Advance care planning facilitation skills training.* Presented at the Respecting Choices Advance Care Planning Facilitator Certification Training, North Bay Hospital, New Port Richey, FL.

Arnold, R. L. (October, 2012) *Personal well-being as a volunteer management strategy.* Presented at the Volunteer Directors Association of Tampa Bay Volunteer Management Conference. Clearwater, FL.

Arnold, R. L. (October, 2012) *An examination of shared values beliefs and behaviors of hospice professionals: A ten year retrospective and re-boot.* Presented at the Center for Hospice, Palliative Care and End-of-life Studies, University of South Florida, Tampa, FL.



Stewart J. T., Nesmith M. W., Mattox K. M. (2012) A case of valproate toxicity related to isoniazid. *J Clin Psychopharmacol*; 32:840-841.

Stewart J. T. (2012) Management of poor postictal suppression during electroconvulsive therapy with propofol anaesthesia: a report of two cases. *J Anaesthesia*; 26(6):925-927.

Thompson L. M., Extermann M., Dilling T. J. et al., (2012, May) Quality of life in poor prognosis patients with locally advanced non-small cell lung cancer (LA-NSCLC) undergoing a phase II study of concurrent cetuximab and definitive thoracic radiotherapy followed by docetaxel and cetuximab. *Journal of Clinical Oncology*, 2012 ASCO Annual Meeting Proceedings (Post-Meeting Edition). Vol 30, No 15_suppl (May 20 Supplement), 2012: e17559

Donovan K. A., Thompson L. M. A., Jacobsen, P. B. (2012) Pain, depression and anxiety in cancer. In Rhonda Moore (Ed.) *Handbook of Pain and Palliative Care Biobehavioral Approaches for the Life Course*. pp615-638, Springer, New York.

Volicer L., Harper D. G., Stopa E. G. (2012) Severe impairment of circadian rhythm in Alzheimer's disease. *J Nutr Health Aging* 16(10): 888-890

van der Steen J. T., Lane P., Kowall N. W., Knol D. L. **Volicer L.,** (2012) Antibiotics and mortality in patients with lower respiratory infection and advanced dementia. *J Am Med Dir Assoc*. 13(2):156-61

Volicer L., Frijters D. H., van der Steen J. T. (2012) Relationship between symptoms of depression and agitation in nursing home residents with dementia. *Int J Geriatr Psychiatry* 27(7):749-54

Volicer, L. (2012) Palliative care in dementia. *Progress in Palliative Care*, Appeared or available online: 15 October 2012 DOI: 10.1179/1743291X12Y.0000000036

Hurley, A. C., **Volicer, L.** and Mahoney, E. K. (2012) Mental status measurement: Mini-Mental State Examination. In Fitzpatrick J.J. and Kazer M.W.. eds, *Encyclopedia of Nursing Research 3rd edition*, Springer Publications, New York, 288-290,

Volicer, L. (2012) Is your nursing home a battlefield? *J Am Med Direct Assoc* 13:195-196

Rawl, S. M., Skinner, C. S., Champion, V. L., Perkins, S. M., Springston, J., Russell, K. M., Tong, Y., Krier, C., **Wang, H.**, Smith-Howell, E. R., Brady-Watts, T., Ballard, D., Myers, L. J., Imperiale, T. F., Rhyant, B., & Willis, D. R. (2012) Computer-tailored Intervention improves colon cancer screening knowledge and health beliefs among African Americans. *Health Education*

PHYSICIAN REVIEW COURSE

The USF Center for Hospice, Palliative Care and End-of-Life Studies is pleased to report that the Hospice & Palliative Medicine Practice Review Course held on September 8 & 9th, 2012 at the Westin Harbour Island, Tampa, FL was a total success. We had over 100 registered participants, of those, 81% were from Florida while the other 19% attending were from out of state.

Topics such as "Successful Test Taking Skills", "Approach to Care"; "Communication/Teamwork/Consultation Etiquette"; "Pain Management"; "Psychosocial / Spiritual Issues"; Non-pain Symptom Management"; Prognostication"; "Discontinuation of Technological Support"; "Impending Death"; "Intractable Pain / Interventional Pain Management"; "Grief and Bereavement"; "Pediatric Palliative Care"; "Urgent Medical Conditions"; "Complementary and Alternative Therapies"; "Palliative Sedation"; and "Ethical/Legal Decision Making" were successfully presented.



The Center for Hospice, Palliative Care and End of Life Studies wishes to express our heartfelt thanks to all of our speakers for their enthusiasm and active participation in our recent review course. We received positive feedback from the participants as well as remarkably high scores on the topics presented.



We thank and acknowledge the physician review course speakers:

Joelle Angsten, M.D.
Robert Arnold, Ed.D., MA
Joan Christie, M.D.
William Haley, Ph.D.
Bruce Himelstein, M.D.
Barbara Lubrano DiCiccone, M.D.
Kirsak Jay Poonkasem, M.D.

Mary Lou Proch, Ph.D.
Sahana Rajasekhara, M.D.
Ron Schonwetter, M.D.
Stewart Stein, M.D.
Jennifer Strickland, Pharm.D.
Howard Tuch, M.D.
Robert Walker, M.D.



- ◆ Dr. Debra Dobbs was appointed a fellow at the Syracuse Policy Institute on Aging Summer Teaching Workshop.
- ◆ Dr. Bill Haley was president-elect of the American Psychological Association, Division of Adult Development and Aging.
- ◆ Dr. Kathy Hyer was chair-elect of the Gerontological Society of America Social Research, Practice, and Policy Section. She was also appointed to the Department of Health and Human Services Expert Panel for a National Plan to Address Alzheimer's Disease.
- ◆ Dr. Kathy Hyer is the treasurer of the Association for Gerontology in Higher Education.
- ◆ Dr. Tamara Baker serves on the Cornell-Columbia Roybal Center Advisory Board for Older Adults.
- ◆ Dr. Lisa Brown served on the United Nations Office for Disaster Risk Reduction's Global Platform for Disaster Risk Reduction.
- ◆ Dr. Daniel Meng was appointed to the Governance Council of the American Public Health Association.
- ◆ Dr. Victor Molinari serves on the NIH National Advisory Council on Aging.
- ◆ Dr. Marion Becker received two national awards from the Council on Social Work Education.
- ◆ Dr. Iraida Carrion was named as a Pioneering Latina Professor, by Hispanic Outlook, 2012.

Palliative Care: Global Perspectives. Caprice Knapp, Vanessa Madden, Susan Fowler-Kerry, eds. Springer, New York.

Jeurkar N., **Farrington S.**, **Craig T.**, Slattery J., Harrold J. K., **Oldanie B.**, Teno J. M., Casarett D. J. (2012) Which hospice patients with cancer are able to die in the setting of their choice? Results of a retrospective cohort study. *Journal of Clinical Oncology*. 1;30(22):2783-7. PMID: 22734023.

Casarett D. J., **Farrington S.**, **Craig T.**, Slattery J., Harrold J., **Oldanie B.**, Roy J., Biehl R., Teno J. (2012) The art versus science of predicting prognosis: Can a prognostic index predict short-term mortality better than experienced nurses do? *Journal of Palliative Medicine*. 15(6):703-8. PMID: 22583382.

Ji L., **Meng H.**, Dong B. (2012) Factors associated with poor nutritional status among the oldest-old. *Clinical Nutrition*; 31(6):922-926.

Shah S., Zemichael O., **Meng H.** (2012) Predictors of mortality, length of stay and comorbid hypothermia in hospitalized neonates with pneumonia in Eritrea, Africa. *Journal of Tropical Pediatrics*; 58(3):238-41.

Roscoe, L. A., **Tullis, J. A.**, Reich, R. R., & McCaffrey, J. C. (2012) Beyond good intentions and patient perceptions: Competing definitions of effective communication in head and neck cancer care at the end of life. *Health Communication*. [2012 May 10 Epub ahead of print].

Dillon, P., **Roscoe, L. A.**, & Jenkins, J. J. (2012) African Americans and decisions about hospice care: Implications for health message design. *Howard Journal of Communications*; 23, 175-193.

Roscoe, L. A. (2012) Healing the physician's story: A case study in narrative medicine and end-of-life care. *Narrative Inquiry in Bioethics*; 2, 65-72.

Schonwetter R. S., **Kim S.**, Quinn M. J., Boehm, D., Patel D., **Emmett C.**, Douglas B., Kirkland T., **Leedy S.**, Woods D., and Westmoreland A. K. (2012) Efficacy of Hylenex preceding subcutaneous opioid infusions for the treatment of pain among hospice patients. *Journal of Palliative Care & Medicine*; 2(2)1-7.

Miladinovic B., Mhaskar R., **Kim S.**, **Schonwetter R.**, and Djulbegovic B. (2012) A flexible alternative to the cox proportional hazard model for prognosticating palliative patient survival. *PLOS ONE*: 7(10):e47804.

Roever C. P., Vyas B. B., Barnett M. C., Sheyner I., **Stewart J. T.** (2012) Visual hallucinations in long-term care. *Ann Long Term Care*; 20(2):25-30.

Logan C. J., **Stewart J. T.** (2012) Treatment of post-ECT headache with topical methyl salicylate. *J ECT*; 28:e17-e18.

Hervey W. M., **Stewart J. T.**, Catalano G. (2012) Treatment of catatonia with amantadine. *Clin Neuropharmacol*; 35:86-87.



new paradigm of older adults as a core social resource. *Journal of Applied Gerontology*. doi:10.1177/0733464812463984.

Holup, A.A., **Dobbs, D.**, Temple, A., **Hyer, K.** (2012) Going digital: Adoption of electronic health records in assisted living facilities. *Journal of Applied Gerontology*. doi:10.1177/0733464812454009.

Dobbs, D., Baker, T. A., **Carrion, I. V.**, Vongxaiburana, E., **Hyer, K.** (2012) Certified nursing assistants' perspectives of nursing home residents' pain experience: Communication patterns, cultural context, and the role of empathy. *Pain Management Nursing*. doi:10.1016/j.pmn.2012.06.008.

Ellis, C. & Rawicki, J. (2012) More than mazel? Luck and agency in surviving the Holocaust. *Journal of Loss and Trauma*. DOI:10.1080/15325024.2012.738574

Emmett, C. (March 2012) Fall assessment and prevention: Applying research to practice. *NHPCO NewsLine*.

Thomas, K. S., McIlvane, J. M., & **Haley, W. E.** (2012) Impact of diagnostic label and disease information on emotions, beliefs, and willingness to help an older parent with osteoarthritis. *Educational Gerontology*, 38, 314-327.

Haley, W. E., Ferraro, K. F., & Montgomery, R. J. V. (2012) Is gerontology ready for accreditation? *Gerontology and Geriatrics Education*, 33, 20-38.

Lopez, E. D., Vasudevan, V., **Lanzone, M.**, Egensteiner, E., Andresen, E. M., Hannold, E. M., & Graff, S. (2012) Florida mammographer disability training vs. needs. *Radiological Technology*, 83(4), 337-48. PMID: 22461343

Wilson, J., **McMillan, S. C.** (2012) Symptoms experienced by hospice patients with heart failure. *Journal of Hospice and Palliative Nursing*, 15(1), 16-22.

Buck, H. G., **McMillan, S. C.** (2012) A Psychometric analysis of the spiritual needs Inventory in informal caregivers of patients with cancer in hospice home care. *Oncology Nursing Forum*, 39 (4), 332-339

Aguado-Loi, C. X., Taylor, T. R., **McMillan, S. C.**, Gross-King, M., Xu, P. (2012) Use and helpfulness of self-administered stress management therapy in patients undergoing chemotherapy in community clinical settings. *Journal of Psychosocial Oncology*, 30, 57-80.

Stark, L., Toftagen, C., Garrison, C., **McMillan, S. C.** (2012) The symptom experience of patients with cancer. *Journal of Hospice and Palliative Care*, 14(1), 61-70

Moré, M. (2012, November) Suncoast Hospice Teen Volunteer Program. *ChiPPs Pediatric Palliative Care Newsletter*, 6, 12.

Poonkasem, K. (Fall 2012) Integrative hospice and palliative medicine: It's not just about morphine. *Florida Family Physician*, Page 10-11.

Orloff, S. (2012) Pediatric palliative care in the United States of America. *In Pediatric*

College of Arts & Sciences

The College of Arts & Sciences has an interdisciplinary faculty in more than 15 academic disciplines, bound by a shared commitment to the study of human ideas and experience, critical inquiry, creative expression and open discourse. There is equal commitment to the responsibility of instilling these scholarly skills and values in students, mentoring them in small classes and challenging them to achieve. A faculty of active scholars publish in respected journals and present papers at national conferences. Students are also recognized for their scholarship.

An honor's program, which culminates in the production of an original thesis, is available to qualified students who wish to add value to their undergraduate credential. In the final semester, all students take a capstone course in which they apply and synthesize all their learning and produce mature work in the discipline. Bachelor of Arts (BA), Bachelor of Science (BS), Bachelor of Science in Applied Science (BSAS), Master of Arts (MA), Master of Social Work (MSW) and Certificate programs are offered. <http://www.usfsm.edu/academics/cas/>

College of Behavioral & Community Sciences

The College of Behavioral and Community Sciences prepares students to improve the quality of life, health and safety of diverse populations. It is home to one of the country's largest behavioral health research and training institutes.

Points of Pride:

CBCS has three top 10 Chronicle of Higher Education-ranked doctoral programs for scholarly productivity (Criminology, Communication Sciences & Disorders, and Aging Studies) and 14 undergraduate majors and master's programs. Four CBCS graduate programs rated among the nation's top 50 and one program placed in the top 100 rankings released by the U.S. News and World Report's "2010 America's Best Graduate



Schools.” Criminology placed 22nd, Audiology 24th, Rehabilitation Counseling 39th, Speech-Language Pathology 46th, and Social Work 71st.

The College is one of the few programs in the United States offering Bachelor’s, Master’s, and Doctoral programs in Gerontology and Aging Studies. In addition, several academic journals are edited or co-edited by CBCS faculty, such as The Journal of Behavioral Health Services & Research, The Journal of Emotional & Behavioral Disorders, Topics in Early Childhood Special Education, Gerontechnology, and the Journal of the American Academy of Audiology.

Departments & Schools

- **Child & Family Studies**

The programs in applied behavior analysis (ABA) are designed to meet the growing need in Florida and nationally for practitioners who can work effectively within systems to improve the quality of services in the fields of developmental disabilities, education, child protective services, rehabilitation, mental health, and business and technology.

- **Communication Sciences & Disorders**

The Department of Communication Sciences and Disorders mission is to foster human communication by:

- ⇒ Conducting research that increases the scientific understanding of communication in both typically-developing and communication-disordered populations.
- ⇒ Educating and mentoring scientists, clinicians, and interpreters who work according to best practices.
- ⇒ Operating teaching clinics that provide high quality diagnostic and treatment services to diverse populations.
- ⇒ Advocating for and raising awareness of the communication needs and the rights of Deaf people and of those with speech, language, and hearing disorders.

- **Mental Health Law & Policy**

The Department of Mental Health Law and Policy has a longstanding commitment to excellence in pursuit of our legislative mission to conduct behavioral health research, and in teaching, training, policy development, and service. In each of these areas we embrace a multi-disciplinary problem-solving approach to address the complex issues at the intersection of behavioral health services and the justice sys-

Black, K. (2012) Sarasota CARES: Final Report. Sarasota, Florida: Jewish Children and Family Services of Sarasota.

Bruno, S., Hutchens, R., Notarstefano, P. (2012) Hospice/Nursing Home Partnership. *A LeadingAge Report*.

Carrion, I. V., Park, N. S., Lee, B. S. (2012) Patterns of hospice use among African-Americans, Asians, Hispanics and Whites: Implications for practice. *American Journal of Hospice and Palliative Medicine*. 29, 2, 12-117.

Carrion, I. V., Bullock, K. (2012) A Case Study of Hispanics and hospice care. *International Journal of Humanities and Social Science*. 2, 4, 9-16.

Carrion, I. V., & Nedjat-Haiem, F. R., Martinez Tyson, D., & Castañeda, H. (2012) An exploratory study of advance care planning among Colombians, Mexicans, and Puerto Ricans with a Cancer Diagnosis. *Supportive Cancer in Care*. [Epub ahead of print]. DOI 10.1007/s00520-012-1652

Carrion, I. V., Nedjat-Haiem, F. (2012) Caregiving for older Latinos at end-of-Life: Perspectives from paid and family (unpaid) caregivers. *American Journal of Hospice and Palliative Medicine*. DOI: 10.1177/1049909112448227

Nedjat-Haiem, F., **Carrion, I. V.,** Ell, K., Palinkas, L. (2012) Navigating the advanced cancer experience of underserved Latinas. *Supportive Cancer in Care*. 20(12), 3095-3104.

Marquez, D. X., Bustamante, E. E., Kozey, S., Kraemer, J., **Carrion, I. V.** (2012) Physical activity and psychosocial health of older caregivers and non-caregivers. *Geriatric Nursing*. [Epub ahead of print].

Dobbs, D., Meng, H., Hyer, K., Volicer, L. (2012) The influence of hospice use on nursing home and hospital use in assisted living among dual-eligible enrollees. *Journal of the American Medical Director’s Association*. 13, 189. e9-189.e13. doi: 10.1016/j.jamda.2011.06.001.

Dobbs, D., Emmett, C., Hammarth, A., Daaleman, T. P. (2012) Religiosity and death attitude and engagement of advance care planning among chronically ill older adults. *Research on Aging*, 34(2), 113-130. doi:10.1177/0164027511423259.

Park, N.S., **Carrion, I.,** Lee, B., **Dobbs, D.,** Jung Shin, H., Becker, M. (2012) The role of race and ethnicity in predicting length of hospice care among older adults. *Journal of Palliative Medicine*, 15(2), 149-153. doi:10.1089/jpm.2011.0220.

Black, K., Dobbs, D., Young, T. (2012) Aging in community: Mobilizing a



A Randomized, Double Blind, Placebo-Controlled Study of a Fixed Dose of Subcutaneous Methylnaltrexone in Adults with Advanced Illness and Opioid Induced Constipation: Efficacy, Safety, and Additional Health Outcomes. (Salix Pharmaceuticals).

Principal Investigator: **Schonwetter, R.**

Early Trajectory of Wandering in Veterans with Mild Dementia

Principal Investigator: Dr. Inez Joseph PI, 2009 – 2012

Co-principal Investigator: **Ladislav Volicer, MD, PhD**
2008-2012

Arsenault, T. (2012) Whose suffering is it? An ethical reflection of the decline and death of a child. *End of Life Ethics: A case study approach.*

Becker, M., Boaz, T., Ansel, R., Demuth, A. (2012) Predictors of avoidable hospitalizations among assisted living residents. *Journal of the American Medical Directors Association, 13*(4), 355-359. doi: 10.1016/j.jamda.2011.02.001.

Kearns, W. D., Fozard, J., **Becker, M. A.,** Jasiewicz, J., Craighead, J., Holsclaw, L. et al. (2012) Path tortuosity in everyday movements of elderly persons increases fall prediction beyond knowledge of fall history, medication use, and standardized gait and balance assessments. *Journal of the American Medical Directors Association, 13*(7), 665.e7-665.e13. doi:10.1016/j.jamda.2012.06.010.

Park, N. S., **Carrion, I.,** Beom, S. L., **Dobbs, D.,** Shin, H. J., **Becker, M.** (2012) The role of race and ethnicity in predicting length of hospice care among older adults. *Journal of Palliative Medicine, 15*(2), 149-153. doi:10.1089/jpm.2011.0220.

Becker, M., Boaz, T., DeMuth, A., Ansel, R. (2012) Predictors of emergency commitment for nursing home residents: The role of resident and facility characteristics. *International Journal of Geriatric Psychiatry, 27*(10), 1028-1035. doi: 10.1002/gps.2817.

Becker, M. A., Martinez Tyson, D., Digennaro, J., Ochshorn, E. (2012) Do Latino and Non-Latino White Medicaid-enrolled adults differ in utilization of evidence-based treatment for major depressive disorder? *Journal of Immigrant and Minority Health, 13*(6), 1048-1054. doi:10.1007/s10903-011-9508-z.

Becker, M. A., Boaz, T., Ansel, R., Schonfeld, L. (2012) *Early rehospitalization among Medicaid enrolled adults with and without serious mental illness. Final AHCA report* (Agency for Health Care Administration (AHCA) series No. 220-x). Tampa, Florida: University of South Florida, Louis de la Parte Florida Mental Health Institute.

tem. Their work is accomplished through strategic partnerships with local, state, and federal agencies to help guide research design, implementation, dissemination, and translation to practical solutions.

- **Rehabilitation & Mental Health Counseling**

Rehabilitation and Mental Health Counseling is an interdisciplinary field and, as such, draws from many related areas such as: psychology, education, behavioral sciences, biological sciences, philosophy, engineering, and law. As an interdisciplinary field, Rehabilitation and Mental Health Counseling attracts faculty members from a full range of disciplines and related programs as they enhance diversity of thought and add richness to the academic and research needs of the department.

- **School of Aging Studies**

The School of Aging Studies primary mission is excellence in applied aging research and education. They are one of the oldest and largest gerontology education programs in the United States, and one of the few programs offering bachelors, masters, and doctoral degrees in Gerontology and Aging Studies. Our Ph.D. in Aging Studies program is a campus-wide doctoral program, hosted by the School of Aging Studies, but involving faculty from throughout the USF campus.

- **School of Social Work**

The School has a strong tradition of providing social work education to the Tampa Bay area, the state and the nation. The BSW and MSW programs are fully accredited by the Council on Social Work Education. The School also offers the Ph.D. in Social Work for practicing professionals and those wishing to contribute to the research mission of the field of social work. There are nearly 4000 alums of the School, many who are practicing as leaders of state, regional, and local social service agencies and non-profit organizations. The School has a strong commitment to promoting social and economic justice through all of its educational programs.

- **Louis de la Parte Florida Mental Health Institute (FMHI)**

The mission of the Louis de la Parte Florida Mental Health Institute is to improve the lives of people with mental, addictive, and developmental disorders through research, training, and education. Established by the Florida legislature in 1967, the Institute is recognized as Florida's premier research and training center for behavioral health services and is a recognized national leader.



The University of South Florida created USF Health as an enterprise dedicated to making life better by improving health in the wider environment, in communities, and for individuals.

USF Health has, at its core, the three colleges of Public Health, Nursing and Medicine, which includes a School of Physical Therapy and the USF Physicians Group. Originally founded as the USF Medical Center in 1965, its name has been changed to USF Health to reflect its collaborative focus on the full continuum of health. Tampa Bay has been enriched by the health professionals who have graduated from USF, and from the patient care and outreach programs of its health colleges.

College of Nursing

The College of Nursing was founded in 1973, and conducts research and offers bachelor's, master's and doctoral degrees in nursing. USF nursing research focuses on moving scientific discoveries to patients and the community through two broad-based initiatives — chronic illness and veterans' health. Through the college's Center for Living with Chronic Illness, faculty and students collaborate on innovative solutions to leading healthcare issues like heart disease, Alzheimer's and other forms of dementia, cancer, and symptom management for chronic illnesses. Through RESTORE LIVES: Research to Rehabilitate and Restore the Lives of Veterans, Service Members and their Families, the college is developing evidence-based therapies to help those in the military overcome psychological stress and other health problems that arise from serving in combat. The college's Biobehavioral Laboratory, providing state-of-the-art biological data analysis, supports both initiatives.

The University of South Florida College of Nursing accomplished its ambitious 5 year plan in two and has joined the ranks of the top 25 nursing schools nationwide receiving National Institutes of Health research funding. There are more than 600 colleges of nursing nationwide.

College of Public Health

The USF College of Public Health (<http://health.usf.edu/publichealth/homepage.html>) was created by the Florida legislature 25 years ago to provide leadership for the Florida public health system through the development of academic programs and by serving as a resource for Florida public health officials. Since that time, the College has

CSWE-NADD Social Work and Integrated Behavioral Health Project
Principal Investigator: **Becker, M.**

07/01/2012 – 06/30/2013 Amount: \$5,000

This project will develop advanced practice curriculum for integrated health and mental health social work practitioners.

Agency: Council on Social Work Education

Early Rehospitalization Among Medicaid-Enrolled Clients With and Without Serious Mental Illness

07/01/2011 – 09/30/2012 Amount: \$10,000

Principal Investigator: **Becker, M.**

Agency: Florida Agency for Healthcare Administration

Sarasota Caregivers Accessing Resources & Essential Services (CARES)

Evaluator: **Black, K.**

05/01/2009 – 4/30/2012 Amount: \$900,000

Sub-contract amount: \$45,000

Agency: Harry and Jeanette Weinberg Foundation and Jewish Family & Children's Service of Sarasota-Manatee, Inc. (refereed).

Caregiving and Health Care Utilization after Stroke among Medicare Beneficiaries

Principal Investigator: David Roth, PhD (Johns Hopkins University)

Collaborator: **Haley, W. E.**

2011-2016 Amount: \$2,944,394.00

(subcontract \$313,049.00) (1R01NS075047)

Agency: National Institute of Neurological Disorders and Stroke

Managing Medication-induced Constipation in Cancer: A Clinical Trial

Principal Investigator: **McMillan, S.**

2008-2013 Amount: \$2.5 million

(R01 NR01075101A1)

Agency: National Cancer Institute

Efficacy of Home-Based Self-Management for Chronic Fatigue

PI: Fred Friedberg (Stony Brook University)

Collaborator: **Meng, H.**

2012-2014 Amount: \$340,383

Agency: NIH/NINR R42NR010496



Serving more than 1,200 patients daily in Sarasota, Manatee, Charlotte and DeSoto counties, Tidewell is one of the largest not-for-profit hospices in the U.S. Home-based palliative care is the basic premise of the program, involving the support of physicians, registered nurses, social service counselors, certified nursing assistants and volunteers, all following a prescribed plan of care. Tidewell's services are available to everyone, regardless of ability to pay.

Tidewell
SINCE 1980

YOUR LOCAL,
NOT-FOR-PROFIT
HOSPICE

Creating a quality, dignified end-of-life experience is Tidewell's goal. In doing so, Tidewell pays tribute to the principles that distinguish hospice from other types of health care providers:

Hospice patients' greatest hopes are to be pain-free and to have distressing symptoms managed. Early on, hospice learned that quality of life revolves around these two factors, and only when they are controlled can people reach beyond to the comforts and therapeutic healing of mind and spirit.

The reward of caring for those with advanced illness is at the heart of hospice and a catalyst in the continuing impact hospice has had for individuals across the nation. Nowhere is it more evident than on Florida's gulf coast, where Tidewell will care for more than 8,000 patients this year.



Our Mission

Helping people live well by providing care, comfort and compassion.

Rather than a place, hospice is a philosophy - a program of care and support wherever patients need us.

Tidewell's services extend to any location - a private residence, hospital, assisted living facility, nursing home or any of our seven hospice houses.

Founded in 1980, Tidewell has grown significantly in the past three decades. Although hospice is often misunderstood as an alternative just for cancer patients, Tidewell admits patients with a broad range of diagnoses, including heart and lung disease, AIDS, renal failure, ALS and end-stage Alzheimer's. Any disease with a predictable prognosis of one year or less is within Tidewell's admission criteria.

Tidewell is committed to offering programs and services that support the ebb and flow of life as a normal part of life's journey. Tidewell care teams are committed to providing compassionate care and support that optimizes comfort for patients and their families, regardless of culture, age, gender, creed or financial circumstances. It is part of Tidewell's mission to care for all in the community who want hospice and palliative care, regardless of ability to pay.

awarded graduate degrees and certificates to over 3,000 public health professionals and nearly 300 undergraduates have taken advantage of a new public health minor. Over its first 25 years, the faculty have generated over \$275 million in external funding for research and supporters and friends have built an endowment of over \$13 million.



College faculty conduct research around the major public health challenges of its time and engage in active community-based research and service learning in the true spirit of public health – recognizing that it is not only through discovery and learning but through the direct translation and application of that knowledge to policies and programs that we succeed in improving the public's health. Today they are recognized leaders in distance learning, in social marketing, in maternal and child health and in global infectious disease research.

Morsani College of Medicine

Education

The University of South Florida has transformed a community medical school, established by the Florida Legislature in 1965, into a major academic medical center known statewide and nationally for its innovative curriculum with an emphasis on improving health through interprofessional education, research and clinical activities.

The USF College of Medicine, which enrolled its charter class in 1971, was named the USF Health Morsani College of Medicine in 2011, signifying its leading role in changing how medical schools teach physicians of the future. Fully accredited by the Liaison Committee for Medical Education, the college awards doctorates in Medicine (MD), and through its School of Biomedical Sciences, PhD and MS degrees in Medical Sciences. USF's new SELECT MD program, in partnership with Lehigh Valley Health Network, focuses on emotional intelligence and leadership development. The School of Physical Therapy and Rehabilitation Sciences, established in 1998, offers Doctor of Physical Therapy (DPT) and transitional DPT degrees.





Chapters Health System, Inc.

(CHS) is a not-for-profit, community-based, post-acute health care system. It provides a wide range of patient-centered health care services and programs that include hospice, palliative care, Programs of

All-Inclusive Care for the Elderly (PACE), Nursing Home Diversion, Partners in Care (PIC) and Transitions. CHS is a parent company incorporating six subsidiaries and programs: LifePath Hospice; Good Shepherd Hospice; Chapters Senior Independence; Chapters Health Palliative Care, LLC, Chapters Health Pharmacy, LLC; and Chapters Health Staffing, LLC. The mission of CHS is to: “support and care for people in our community with or affected by advanced illness by offering a wide variety of compassionate healthcare options.” At CHS, hospice services are available for patients who have been diagnosed to be in the last 12 months of a life-limiting illness. CHS provides patient-centered and value based clinical programs that offer the right care in the right setting at the right time along a patient’s illness trajectory from which a patient/family may choose.



LifePath Hospice and Good Shepherd Hospice are accredited by The Joint Commission and they continue to be a leader in program development and innovation in palliative care in order to enhance the quality of life for all patients. During 2012, CHS had 1,175 full time, 46 part time employees, and 235 “as needed pool” employees, as well as 1,747 volunteers. During the same calendar year, LifePath

Hospice and Good Shepherd Hospice served 11,686 patients and admitted 9,692 new patients. The hospices’ average daily census in 2012 was 2,049 patients. The mean and median lengths of stay were 75 and 15 days, respectively. During 2012, 1,808 physicians referred patients to LifePath Hospice and Good Shepherd Hospices while 225



The Hope Mission
To provide exceptional care and support to every individual and their loved ones as they fulfill life’s journey.



Hope HealthCare Services

Care management and support for everyone living with a life-limiting illness

The Hope Mission

To provide exceptional care and support to every individual and their loved ones as they fulfill life’s journey.

Hope Parkinson Program

Lee County

Hope Hospice

Lee, Glades and Hendry counties

Services and activities for people living with Parkinson’s disease and their care partners

Care, comfort and support for individuals with life-limiting illnesses and their families

Hope Connections

Glades and Hendry counties

Hope Kids Care

Lee, Glades and Hendry counties

Home-bases independent living and care for people 60 and older

Help for children and families coping with grief or serious illness

Hope Healing Hearts

Lee, Glades and Hendry counties

Hope PACE

Charlotte, Collier and Lee counties

Counseling and support for those who have experienced the loss of a loved one

Program of All-inclusive Care for the Elderly: Medicare/Medicaid or private pay program enabling people 55 and older to maintain independent living

Hope VALOR Program

Charlotte, Collier, Glades, Hendry and Lee counties

Hope Visiting Nurses

Lee and Hendry counties

Specialized care and support for veterans

Medicare or private pay services including home health care; home health aides; therapies; and social worker assessment

Hope at Work

Charlotte, Collier, Glades, Hendry and Lee counties

Hope Comfort Care

Charlotte, Collier, Glades, Hendry and Lee counties

Professional support services provided to businesses at no cost, to help their employees and families cope with grief, loss and care giving





Mission

The mission of Moffitt Cancer Center is to contribute to the prevention and cure of cancer.

Vision

Moffitt's vision is "to be the leader in scientific discovery and translation into compassionate care, cures, and prevention of cancer for our community and the world. As it grows to fulfill its mission, the Cancer Center will continue to be distinguished by its compassionate and effective patient care.

Moffitt Cancer Center & Research Institute began its research efforts in 1993 and by 1998 achieved National Cancer Institute (NCI) designation. In 2011, the NCI renewed Moffitt's Comprehensive Cancer Center status for another five years. Today, research at Moffitt includes more than 135 investigators organized around six scientific programs, all with an emphasis on translation. Among the factors and accomplishments over the past five years that the NCI cited were:

- Doubling of overall research funding at Moffitt
- A 130-percent increase in new patients referred to Moffitt
- Development of early-phase Moffitt investigator-initiated studies
- An increase in accrual to therapeutic phase I, I/II and II clinical trials

The NCI also highlighted several of Moffitt's strengths, including the expansion of basic research, especially in the areas of cancer prevention and control; the growth and maturation of translational and clinical research, active collaboration between bench and clinical scientists; and careful recruitment of basic scientists in molecular and cancer genetics.

Institutional Values

- ◇ Scientific, educational, and patient care excellence
- ◇ Unity in pursuit of our mission
- ◇ Creativity
- ◇ Compassion for our patients and their families
- ◇ Employees, volunteers, and faculty are our most prized resources
- ◇ Stewardship
- ◇ Social responsibility and ethics of the highest standard

nursing homes and assisted living facilities partnered with them.

LifePath Hospice and Good Shepherd Hospice have 5 acute inpatient units/facilities located in Temple Terrace (24 beds), Sun City Center (24 beds), Lakeland (7 beds), and Auburndale (12 beds), and Sebring (16 beds) totaling 83 beds serving four counties. These units have served 3,228 patients in 2012.

In October of 2012, Good Shepherd Hospice held a ground breaking ceremony for the Lakeland Hospice House which will provide an additional 9 beds to meet the acute inpatient needs in the Lakeland service area. This hospice house should open in the fall of 2013.

In addition to home and facility based hospice care, Chapters Health Palliative Care, LLC has provided hospital-based palliative care consult services in partnerships with five community-based hospitals in the service areas (St. Joseph's Hospital, St. Joseph's North, St. Joseph's Children's Hospital, Florida Hospital Tampa, and Winter Haven Hospital) as well in community nursing homes, serving over 1,727 patients in 2012. The Chapters Health Palliative Care pediatric program, in partnership with St. Joseph's Children's Hospital in Tampa, expanded to include a Pediatric Clinic providing outpatient palliative care services to pediatric patients. In 2012, 128 pediatric patients received palliative care services.

In 2012, CHS continued to grow the following two new programs: Program of All-Inclusive Care for the Elderly (PACE) in Hillsborough County and Nursing Home Diversion (NHD) program in Hillsborough, Polk, Highland, and Hardee Counties. Additionally, CHS began the process to expand the PACE program to Polk County. The goal of PACE is to oversee participants' medical care and help those who would be eligible for nursing home care remain in their homes. PACE care management services include physician and nursing services, personal care, supportive services, medications and medical equipment. The PACE program is funded via Medicare/Medicaid, private insurances or by private funds, and involves utilization of an Adult Day Care Center. The NHD program is a case management model that oversees services assisting the elderly, who also qualify for nursing home placement, allowing them to remain in the community as long as possible. Some additional services provided through the NHD program are meals, caregiving, chores, and home health care. In 2012, CHS served 89 participants in the PACE program and 4 participants in the NHD program.





**SUNCOAST
HOSPICE**

Licensed to serve since 1981

Your life. Our life's work.™

For 35 years **Suncoast Hospice** has been Pinellas County's community-based nonprofit hospice. We are committed to serving individuals of all ages living with chronic and/or terminal illnesses, nearing the end of life or experiencing grief.

Hospice Care

From the moment of diagnosis, we are here to help. Patient concerns and preferences guide our care and options. Care is available to everyone regardless of diagnosis. **Suncoast Hospice** care includes:

Hospice Care Teams

Skilled professionals and volunteers based on patient needs including physicians, nurses, medical equipment technicians, pharmacists, licensed counselors, chaplains and more.

Integrative Medicine

A type of patient-centered care that focuses on comforting the patient, mind, body and spirit.

Suncoast Hospice Houses

Three **Suncoast Hospice** Houses provide warm and caring environments with around-the-clock care for patients and support for visiting family members and friends. Locations are in Palm Harbor, Pinellas Park and inside Bayfront Medical Center in downtown St. Petersburg.

Palliative Care

Palliative care is provided to people living with serious illnesses to relieve pain and other symptoms and improve comfort and quality of life. Palliative Care services include:

Pain & Symptom Management

A specialized team of professionals that help ease physical, emotional and spiritual pain. This care is offered in patients' homes, hospitals, nursing homes or hospice houses.

Home Care

specifically designed for patients of any age who are living with a serious illness or injury and have complex care needs but wish to remain at home.

Integrative Medicine Home Care

Children & Families

Suncoast Hospice assists children and teens dealing with serious illnesses and provides grief and healing support for children who have experienced loss and for families for have lost a child. Children and family services include:

- ◆ Children's hospice & palliative care
- ◆ Infant and prenatal loss support
- ◆ Bereavement retreats and camps
- ◆ Crisis and trauma support

Grief & Healing

Grief and healing support services are available to everyone in our community, regardless of whether they or a family member received hospice care. Grief support comes in many forms including:

- ◆ Support groups
- ◆ One-on-one counseling
- ◆ Caregiver support
- ◆ Grief support in the workplace
- ◆ Sudden death or trauma
- ◆ Specialized counseling for children and/or families
- ◆ Community memorial services

Suncoast PACE

Program of All-Inclusive Care for the Elderly (PACE) is a Medicare/Medicaid program helping those 55+ remain independent. Services include:

- ◆ Case management
- ◆ Medical services & supplies
- ◆ Transportation & Social programs
- ◆ Wellness activities & Medicines

