



FPQC SOOTHE Initiative

Kickoff Meeting—October 22nd, 2025



FPQC's Vision and Values

“All of Florida’s mothers, infants & families will have the best health outcomes possible through receiving respectful, high quality, evidence-based perinatal care.”



- Data-Driven
- Population-Based
- Evidence-Based
- Respect-Centered
- Value-Added

FPQC Partners & Funders



The American College of
Obstetricians and Gynecologists
WOMEN'S HEALTH CARE PHYSICIANS



Centers for Disease Control &
Prevention



AWHONN
FLORIDA
PROMOTING THE HEALTH OF
WOMEN AND NEWBORNS



AGENCY FOR HEALTH CARE ADMINISTRATION



FLORIDA AFFILIATE of the
AMERICAN COLLEGE
of NURSE-MIDWIVES
With women, for a lifetime®



Mission to Care. Vision to Lead.



ALLIANCE FOR INNOVATION
ON MATERNAL HEALTH



Florida Society of Neonatologists

Advancing the Care of Neonates in the Sunshine State



FLORIDA ACADEMY OF
FAMILY PHYSICIANS
SUPPORT FLORIDA'S FAMILY PHYSICIANS

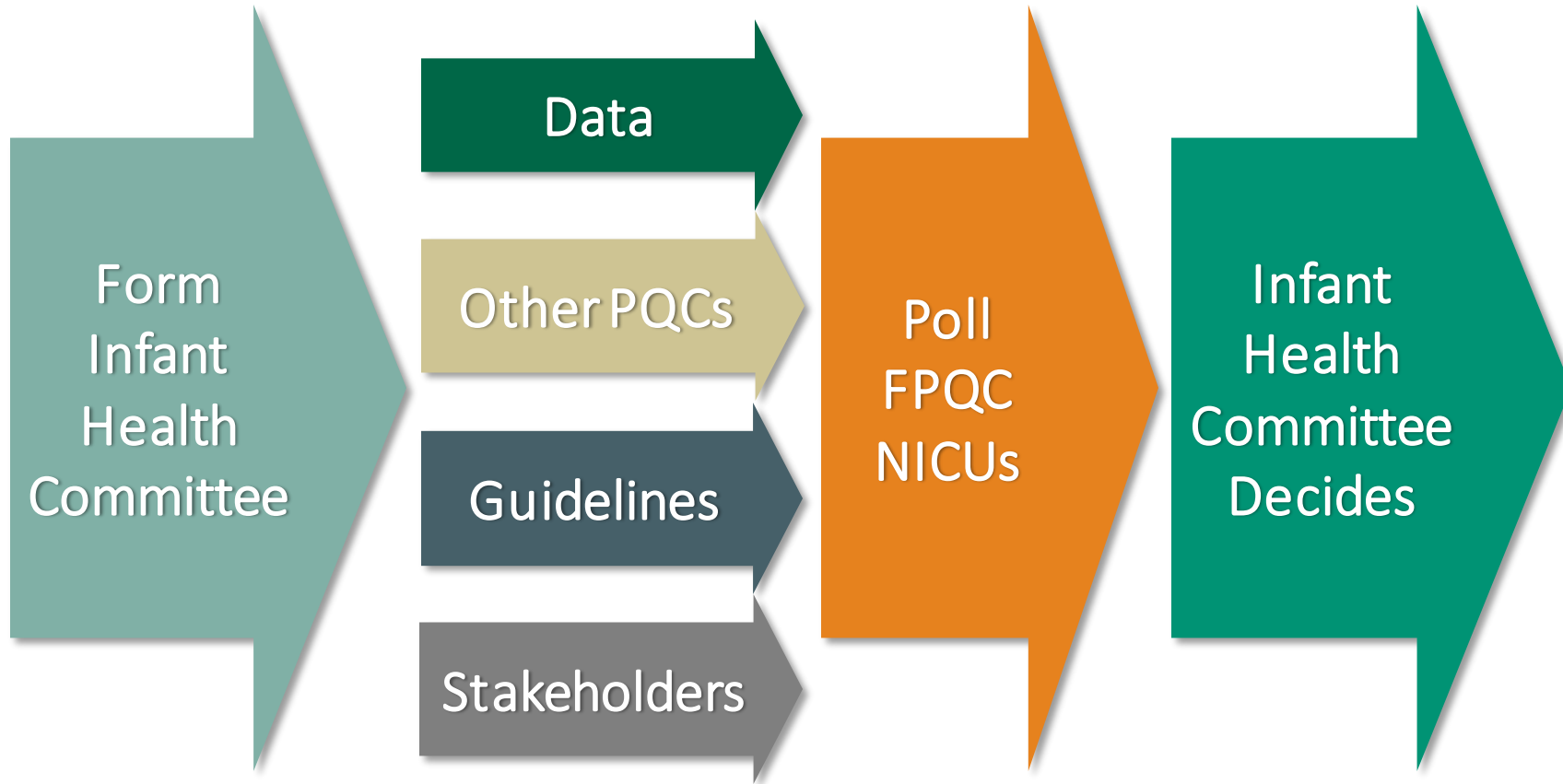


**Thank You to Our Generous
Hosts!**



Advent Health

Selecting Infant Health Initiatives



FPQC Initiatives

Maternal Health

PACC

PROMPT

MFC

OHI 2.0

*New Maternal
Initiatives TBA*

Infant Health

Homeward Bound

SOOTHE

Ongoing Programs

Perinatal QI Indicators

Birth Certificate Training

Levels of Maternal Care (LOMC)

2024

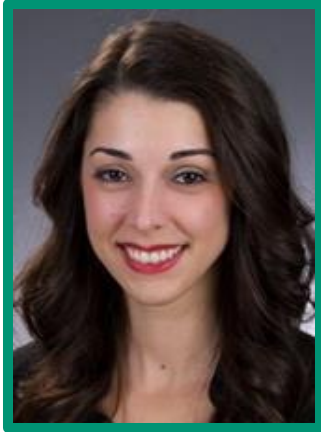
2025

2026

2027

SOOTHE Leadership Team

Physician Leads



Patoula Panagos



Josef Cortez

Nurse Lead



Jennifer Bilecki

Family Lead



Lelis Vernon

SOOTHE Advisors

- Ashley Pugh
- Barbara Glassman
- Berni Butler
- Bethyna Blaise
- Christine Girad
- Corrienne Lambert Lustman
- Crystal Clarke
- Diane Delgado Allen
- Grace Twitty
- Ida Alami
- Jenelle Ferry
- Jodi Dolezel
- John Lanza
- Julie Crum
- Karen Edlington
- Katie Powers
- Kayla Robinson
- Kelli Stewart
- Kerry Pilgrim
- Kylie Rowlands Perez
- Lacy Chavis
- Lashelle Leftheris
- Lilly Chang
- Lindsay Khan
- Margie Boyer
- Marie Berg
- Mark Hudak
- Nancy Martinez
- Rev. Tommy Rodgers
- Samarth Shukla
- Shannon Casola
- Stacy Zediker
- Sue Bowles
- Susie Johnsen
- Suzanne Schneider
- Tamara Bledsoe
- Thais Queliz
- Vargabi Ghei
- Whitney Sager

FPQC Team

FPQC Leads



Lori Reeves

QI Team



**Estefanny
Reyes Martinez**



Sara Stubben



**Shelby
Davenport**

Data Team



Alexa Mutchler



Leomar White



**Linda
Detman**

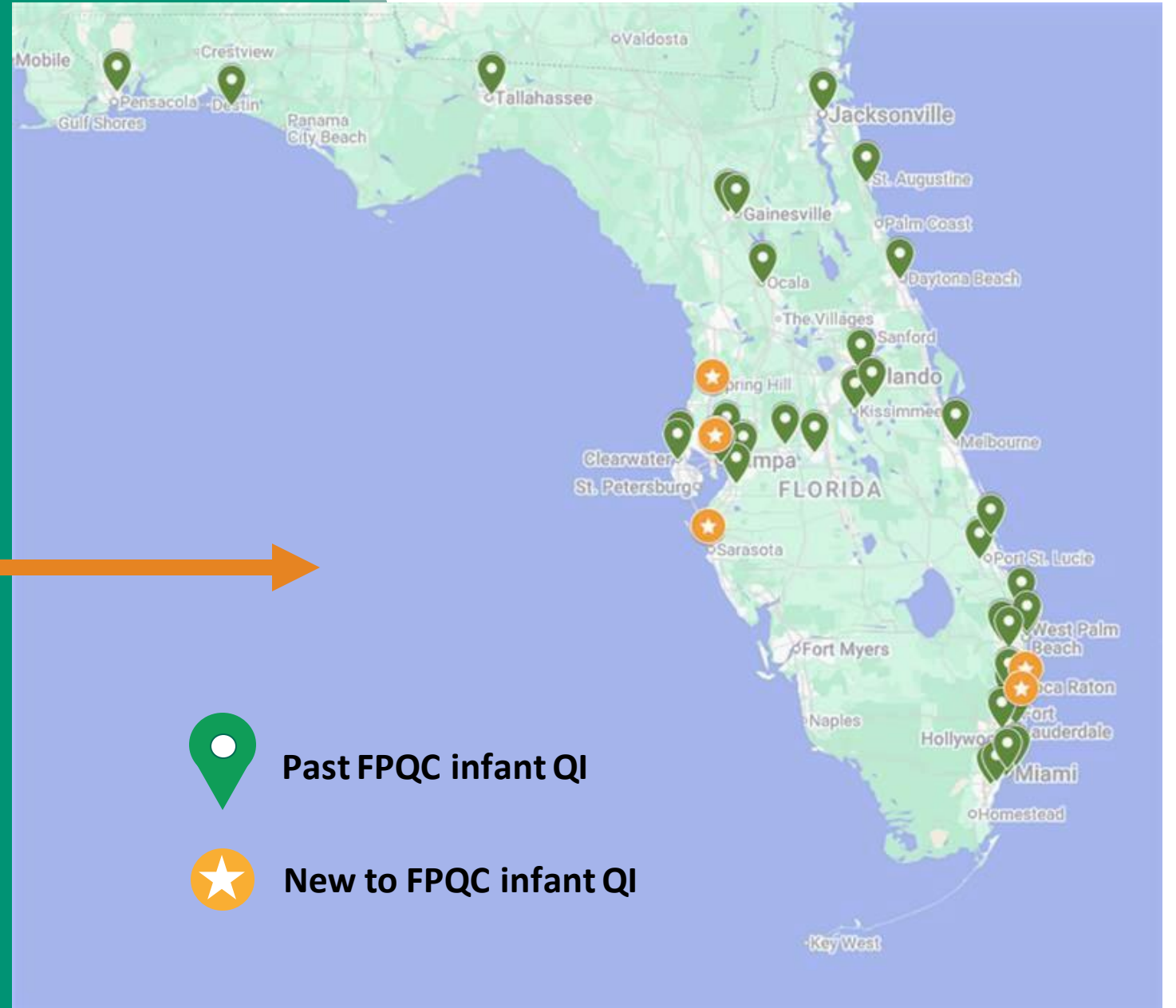


**Estefania
Rubio**

SOOTHE Participating Hospitals

43 Florida NICUs

58% FL NICUs (LII+)



Mom's voice boosts language-center development in preemies' brains, study finds

By [Erin Digitale](#)

Premature babies who heard recordings of their mothers reading to them had more mature white matter in a key language area of the brain, a Stanford Medicine-led study found.

[Pediatrics](#) | October 13, 2025



Listening to mom in the neonatal intensive care unit: a randomized trial of increased maternal speech exposure on white matter connectivity in infants born preterm

Katherine E. Travis, Melissa Scala, Virginia A. Marchman, Hua Wu, Cory K. Dodson, Lisa Bruckert, Molly F. Lazarus, Rocío Velasco Poblaciones, Kristen W. Yeom and Heidi M. Feldman

Front. Hum. Neurosci., 13 October 2025

Sec. Speech and Language

Volume 19 - 2025 |

<https://doi.org/10.3389/fnhum.2025.1673471>

A woman with dark hair is lying in a hospital bed, holding a premature baby. She is wearing a dark blue face mask and has a nasal cannula in her nose. The baby is wrapped in a patterned blanket and has a blue tube in its mouth. A medical syringe is attached to the woman's arm. The background is a green hospital bed frame.

HOW A MOTHER'S VOICE
CAN HELP PREMATURE BABIES

90 SECONDS
WITH **LISA KIM**

SOOTHE Initiative Timeline

