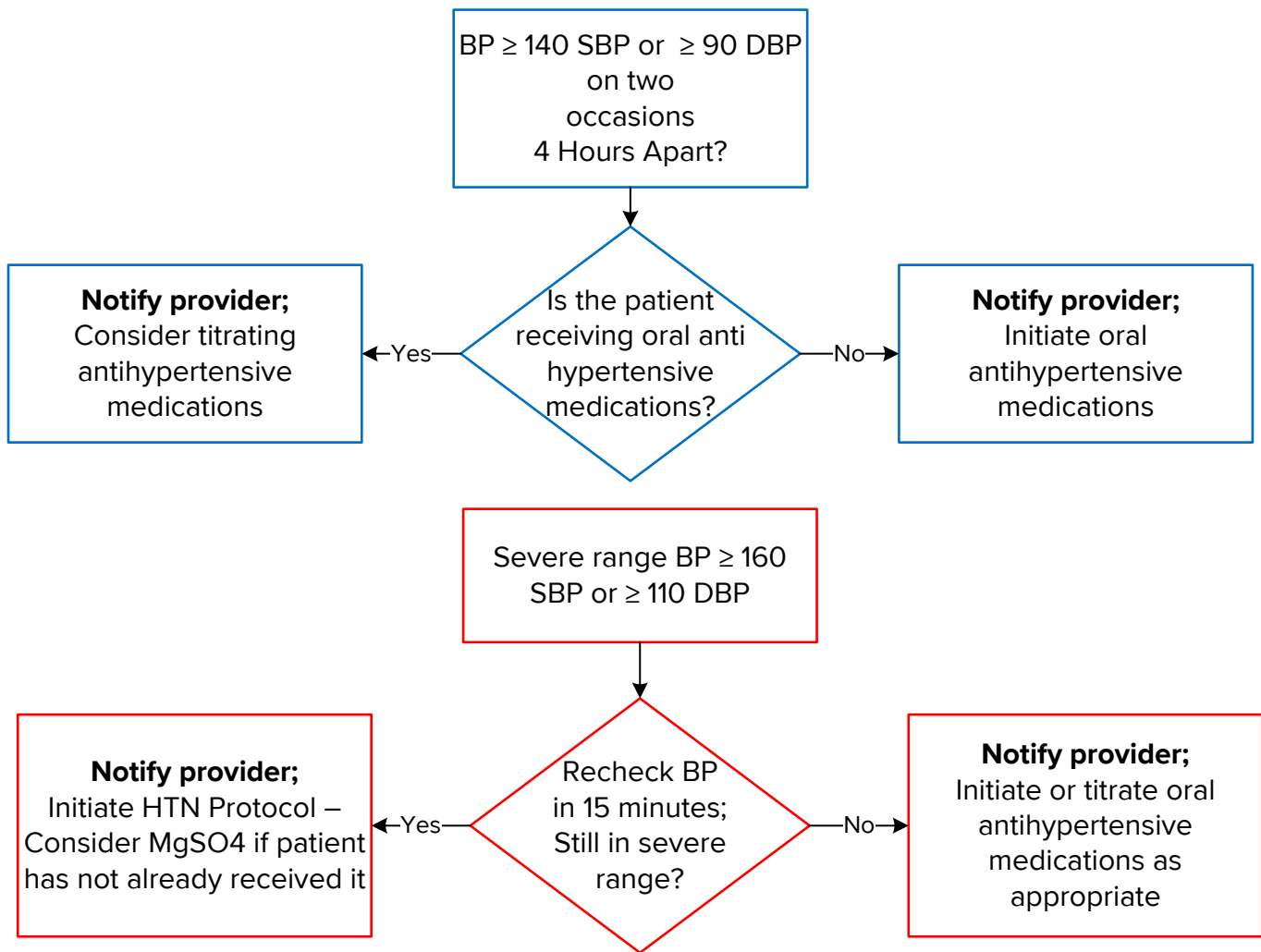


Postpartum Blood Pressure Management from Delivery to Discharge
BP Goal: ≤ 140 SBP and ≤ 90 DBP



Untreated HTN within 12 hours before discharge → 32% higher risk of readmission
Normalize the blood pressure for at least 12 hours before discharge.

Preferred oral anti-HTN medications post delivery

Preferred Medications In Lactation	Starting Dose	Maximum Dose	Precautions and Considerations
Nifedipine (extended release)	30 mg daily	120 mg per 24 hours	
Enalapril, captopril, benazepril	Varies by agent	Varies by agent	Close follow-up of infant's weight; counsel on contraceptive plan
Labetalol	100 to 200 mg twice daily	2400 mg per 24 hours	Asthma, acute decompensated cardiac function, bradycardia
Hydrochlorothiazide	12.5 mg daily	50 mg per 24 hours	May decrease milk production
Hydralazine	10 mg four times daily	300 mg per 24 hours	Reflex tachycardia

PO furosemide 20mg daily x 5 days starting PP day 1
Exception: most recent Cr ≥ 1.2 mg/dL