



PACC

POSTPARTUM ACCESS & CONTINUITY OF CARE

In Florida, a concerning trend persists: a third to a half of pregnancy-related deaths occur after the mother has been discharged home. Notably, 69% of these deaths are preventable, with a third involving a stand-alone visit to the emergency room before death. Black, obese, older (35+), and Medicaid-covered mothers face a disproportionately higher risk of death post-discharge. Postpartum (PP) women are also at higher risk of cardiovascular disease, stroke, PP depression, and other complications well after discharge. As a key strategy to optimize PP care, ACOG recommends an early PP visit for all patients within 3 weeks of giving birth.

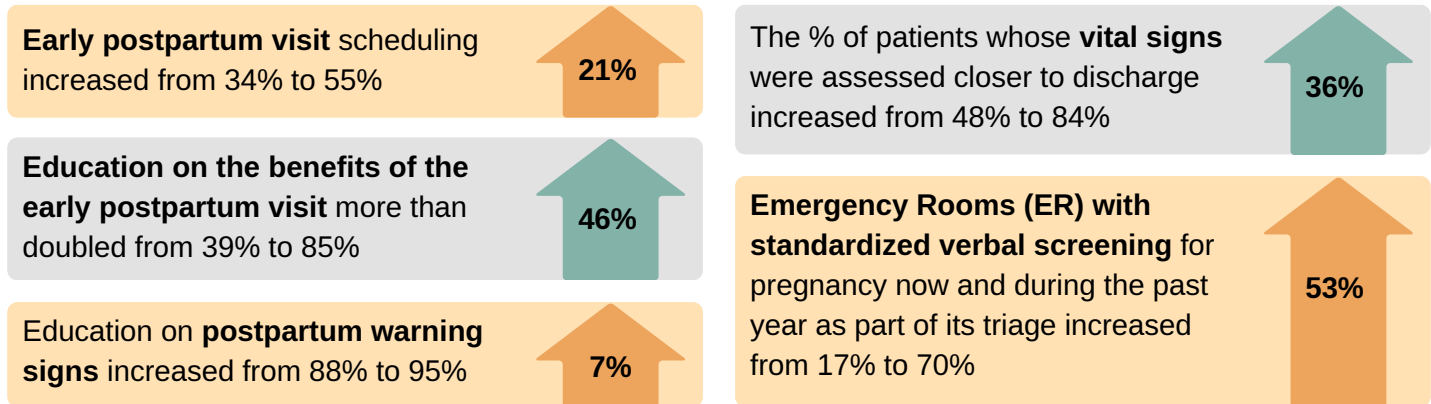
WHAT IS PACC?

In January 2023, FPQC launched the Postpartum Access & Continuity of Care (PACC) Initiative with 75 Florida hospitals, covering 72% of birthing hospitals and 81% of births state-wide. PACC aims to improve maternal health through hospital-facilitated continuum of postpartum care by coordinating and providing respectful, timely, and risk-appropriate care and services. FPQC equips hospitals with an evidence-based toolkit and resource directory, supplemented by in-person training, monthly coaching calls, peer mentorship, and rapid data reporting to support ongoing improvement. View these resources at FPQC.org/PACC/toolbox.



KEY ACHIEVEMENTS

From January 2023 to January 2024, PACC hospitals have exceeded their initial goals across key metrics:



OVER 70% OF PACC HOSPITALS HAVE:

- Enhanced operations through workflow optimization and staff education, including smart phrase integration in the EHR system.
- Improved ER and OB collaboration, with postpartum education for ER staff and streamlined OB consultations.
- Engaged in monthly coaching calls to share promising practices, exchange insights from small tests of change, and celebrate successes.

IMPACT ON MOTHERS: SAVING LIVES

Being a part of PACC saves lives! The PACC initiative recommends a full set of vital signs within 2 hours before discharge. In one of our PACC hospitals, a patient was ready to go home, but she had elevated blood pressure at her final check. She wanted to go home and considered leaving against medical advice. Her nurse and physician convinced her to stay, and within a few hours her condition declined rapidly, requiring ICU care. She recovered fully and was able to go home safely a few days later.



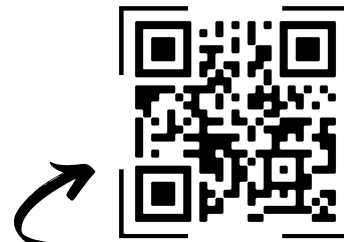
<https://qrco.de/PACCsaves>

Hospitals have shared other patient stories highlighting PACC's life-saving impact. Scan to read more!

SUSTAINABILITY: ENSURING LONG-TERM IMPACT

PACC hospitals have attained great success throughout the initiative. With the active phase of the initiative coming to an end in June, PACC hospitals will continue to:

- Conduct periodic EHR audits to ensure clinician compliance with established policies and procedures
- Increase OB engagement over time, with most providers conducting risk assessments before discharge and supporting early postpartum visits through office or RN-driven protocol visits
- Prioritize collaboration with ERs, including free-standing ERs and EMT providers, to establish standardized workflows and protocols for screening and caring for pregnant and PP patients



<https://qrco.de/PACC-ER>

Check out FPQC's ER resources!

ONGOING OPPORTUNITIES FOR HOSPITALS

- Keep collaborating with your clinical teams to ensure that all patients have access to an early postpartum visit.
- Celebrate and disseminate your success!
- Plan for future initiatives: FPQC will be launching an initiative on Severe Hypertension in Pregnancy in the fall of 2024 with components of PACC. More details to come!

Thanks to the Florida Department of Health and the Florida Maternal Mortality Review Committee for providing the data.



**Florida Perinatal
Quality Collaborative**

FPQC.org/PACC

Email FPQC@usf.edu for more information