

To view in your web browser, [click here](#).

Volume 9, Issue 9 September 2017



USF SafetyFlorida e-Letter

Monthly Newsletter for the USF SafetyFlorida Consultation Program



Practical Application of OSHA Health Standards

Back in 1970, when the OSH Act was signed into law by President Nixon, the newly formed OSHA had a relatively short time frame to put into effect numerous and wide-ranging standards to protect American workers. To do so efficiently and expeditiously, OSHA relied heavily on standards and guidelines already vetted and published by industry experts and trade associations. [Read More](#).

Safety and Health Consultant

Think SHARP

OSHA's Safety and Health Achievement Recognition Program awards and exempts businesses with exemplary safety and health management systems from OSHA inspections for a period up to two years. Qualifying businesses must participate in a comprehensive on-site safety and health analysis and also have Days Away, Restricted or Transferred (DART) and Total Recordable Case (TRC) rates lower than their industry average.

For more information regarding the SHARP program or to see previously profiled success stories, [click here](#).

What's Wrong With This Picture

Photographs are a learning tool of how accidents can be prevented. Thank you to [Luis Silva](#), our USF SafetyFlorida contributor for September.



From the Program Director

Charlene Sitterly, MS.Ed., CWCP

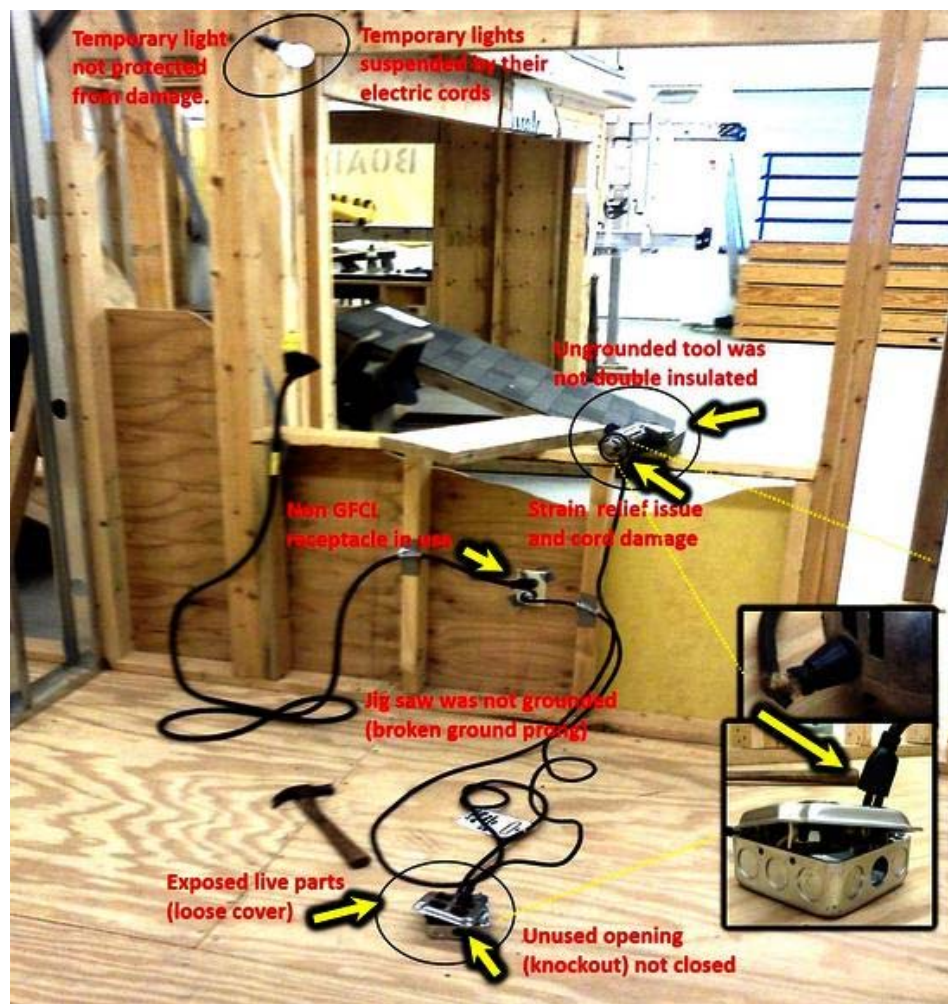
Dear Reader,

Florida communities are hard at work to recover from damages caused by recent hurricane activity. It is highly important to be prepared and to develop an effective emergency evacuation plan for the safety and health of your company and your workers. [Read More](#).

Program News

USF SafetyFlorida Program Director to Retire!

Please join us in wishing USF SafetyFlorida Program Director a fond farewell as she embarks on new and exciting adventures. Charlene Sitterly has worked in the field of Occupational Safety and Health for over 30 years, and has had a significant impact on the USF SafetyFlorida Consultation Program, the USF OTI Education Center of Wesley Chapel and the Florida small



Can you spot the hazards in the image above? Read below to find out.

Applicable regulations: OSHA regulations for construction and other industries can be accessed at www.osha.gov/law-regs.html.

- 1926.403(b)(2): The metal box was not used in accordance with the instructions in the listing and labeling. (it was not mounted and secured)
- 1926.403(i)(2)(i): Live parts of the receptacles mounted on the metal box were not guarded against accidental contact. (exposed terminals on receptacles attached to box)
- 1926.404(b)(1)(i): Ground fault circuit interrupters (GFCI) or an assured equipment grounding conductor program were not used. (non-GFCI receptacle)
- 1926.404(f)(6): The path to ground from circuits, equipment and enclosures was not permanent and continuous (broken ground prong on the jig saw cord plug).
- 1926.404(f)(7)(iv)(C)(1): For hand held motor-operated hand tools connected by cord and plug, the exposed non-current carrying metal parts (frames) which may become energized were not grounded. (the ungrounded tool was not protected by a system of double insulation and grounding prong was damaged; can also be cited under 1926.302(a)(1), Subpart I)
- 1926.405(a)(2)(ii)(E): All lamps for general illumination were not protected from accidental contact or breakage.
- 1926.405(a)(2)(ii)(F): Temporary lights were suspended by their electric cords.
- 1926.405(b)(1): Unused opening in metal box was not effectively closed.
- 1926.405(g)(2)(iv): Flexible cord on jig saw was not provided with strain relief.

business community.

According to Mrs. Sitterly, after she retires, her retirement plans include traveling with her spouse, enjoying her grandchildren, and continuing along in her missionary work in Honduras. Additionally, she desires to continue work in the field of workers' compensation and healthcare at some point in the future, should the opportunity arise.

We look forward to seeing her return in the very near future!



Evacuation & Emergency Planning Training!

In an effort to help small business owners with recovery after the hurricane, USF SafetyFlorida and USF OTIEC are offering complimentary training on Evacuation and Emergency Planning on October 20, 2017 from 8:00am to 12:30pm at the USF OTI Education Center in Wesley Chapel, FL. Visit <http://bit.ly/2yqQfRV> to register to attend.

OSHA News

- **09/25/2017** - [Region 5 OSHA News Release](#) - OSHA Cites Chicago Container Manufacturer After 4 Workers Suffer Injuries
- **09/15/2017** - [Region 8 OSHA News Release](#) - Federal Agencies in Montana and Dakotas Align on Safety Practices
- **09/13/2017** - [OSHA Trade Release](#) - OSHA, American Chemistry Council Sign Alliance to Protect Workers

Inspections: 1926.403(b)(1)(i), (ii) and (iii): Electrical equipment was not examined to ensure that it was free from recognized hazards. (The metal box was not used in accordance with its listing and labeling, its cover was missing screws and was loose and the insulation on the saw flexible cord was damaged.)

Training: 1926.21(b)(2): The employer did not instruct each employee in the recognition and avoidance of unsafe conditions and the regulations applicable to his work environment to control or eliminate any hazards or other exposure to illness or injury.

Abatement: Visually inspect all cords and electric equipment before use and remove any defective item from service until repaired or replaced. Use equipment only in accordance with its design and listing and labeling. Use ground fault circuit interrupters or implement an assured equipment grounding conductor program. Install covers to protect lamps used for temporary lighting. Close unused openings in metal boxes.

Electrical Safety Work Practices

Work on new and existing energized (hot) electrical circuits is prohibited until all power is shut off and grounds are attached.

An effective Lockout/Tagout system is in place.

Frayed, damaged or worn electrical cords or cables are promptly replaced.

All extension cords have grounding prongs.

Protect flexible cords and cables from damage. Sharp corners and projections should be avoided.

Use extension cord sets used with portable electric tools and appliances that are the three-wire type and designed for hard or extra-hard service. (Look for some of the following letters imprinted on the casing: S, ST, SO, STO.)

All electrical tools and equipment are maintained in safe condition and checked regularly for defects and taken out of service if a defect is found.

Do not bypass any protective system or device designed to protect employees from contact with electrical energy.

Overhead electrical power lines are located and identified.

Ensure that ladders, scaffolds, equipment or materials never come within 10 feet of electrical power lines.

All electrical tools must be properly grounded unless they are of the double insulated type.

Multiple plug adapters are prohibited.

FATALITIES FROM ELECTROCUTION ARE PREVENTABLE

Electrocution is one of the leading causes of death in construction. The main cause of electrocution deaths among electrical workers was contact with "live" (energized) electrical equipment and wiring. This indicates that many electrocution deaths could have been avoided if the electrical circuits and equipment were de-energized, locked out, or tagged out before a worker began working on them. Fatalities due to electrocution continue to be extremely high, with 134 fatalities during the year 2015.

Commitment, planning, preparation, participation, training, frequent inspections and prevention are the basis of safety and health in the workplace. You can learn more about electrical safety and other construction hazards, you can visit the OSHA Construction e-Tool at <https://www.osha.gov/SLTC/etools/construction/index.html> for more information. For safety and health programs, or to request consultation services, please visit the USF SafetyFlorida website at <http://www.usfsafetyflorida.com/> for more information.

Reaching Out in Safety

from Exposure to Hazardous Chemicals

- **09/13/2017** - [OSHA Trade Release](#) - OSHA, National Grain and Feed Association Form Alliance to Protect Workers in Grain Handling Industry
- **09/08/2017** - [Region 6 OSHA News Release](#) - OSHA Signs Alliance to Promote Worker Safety and Health
- **09/08/2017** - [Region 6 OSHA News Release](#) - OSHA Renews Alliance to Provide Training to Young Workers
- **09/07/2017** - [Region 4 OSHA News Release](#) - OSHA Finds Machine-Guarding, Noise Violations at Florida Bakery



To view upcoming courses offered by USF OSHA Training Institute Education Center, please select from the following links:

- [General Industry](#)
- [Construction Industry](#)
- [Maritime Industry](#)
- [Disaster Site Worker](#)

** Please note, all course registrations must be purchased via Credit Card only.*

For information about these courses as well as the center's professional certificate program for construction, general industry and the maritime industry, click [here](#) or e-mail usfotioutreach@health.usf.edu.

Want to be in the know and not in the no?





Be sure to visit www.usfsafetyflorida.com and our social media page on Facebook @USFSafetyFlorida to learn about what's happening in the world of safety and health and for more information regarding free training initiatives.

Helping employers profit from a safer workplace.

Congratulations to KVC Constructors, Inc. for receiving USF SafetyFlorida's Sunshine State Safety Recognition Award for their Aventura Medical Tower Project. The award is given to Florida employers and employees in all industries who proactively and routinely engage in job safety.

To learn more about the Sunshine State Safety Recognition Award and how to qualify, click [here](#).

Division of Workers' Compensation

The State of Florida, Department of Financial Services, Division of Workers' Compensation offers free seminars for Florida employers regarding workers' compensation and workplace safety. Seminars are held in various locations around the state and are from 9 a.m. until noon. To learn more and to register, click [here](#).

[2017-July-December-Seminar-Registration-Form](#) 63.00 kB

Subscribe to our monthly e-Letter!



Interested in signing-up for our monthly e-Letter?

Visit www.usfsafetyflorida.com, or click [here](#) to subscribe now.

Missed an issue?

[Click here](#) to view past e-Letter content.

This e-Letter is a monthly publication of the USF SafetyFlorida consultation program and written exclusively to serve the companies using its services. To subscribe, [click here](#), or if you would like to share a copy of our e-letter with a friend or colleague, [click here](#). If you would like to read a previous month's newsletter, visit our [archives](#). You can also find us on Facebook. Members can visit the [USF SafetyFlorida page](#) and become a fan today.

USF SafetyFlorida, the state's safety and health consultation program, provides free and confidential services to Florida's small businesses. Its mission is to save lives by reducing workplace injuries and illnesses and to assist Florida's small businesses profit from safety. The program is funded by OSHA and the state of Florida. For more information about USF SafetyFlorida or to request a complimentary, confidential consultation visit www.usfsafetyflorida.com. For newsletter comments and questions, e-mail eLetter@usfsafetyflorida.com.



USF SafetyFlorida

13201 Bruce B Downs Blvd, MDC56

Tampa, FL 33612-3805

866-273-1105