
USF College of Medicine Improvements

Project Scope and Program Presentation

USF – Health Facilities Planning and Construction

College of Medicine Improvements

Introduction

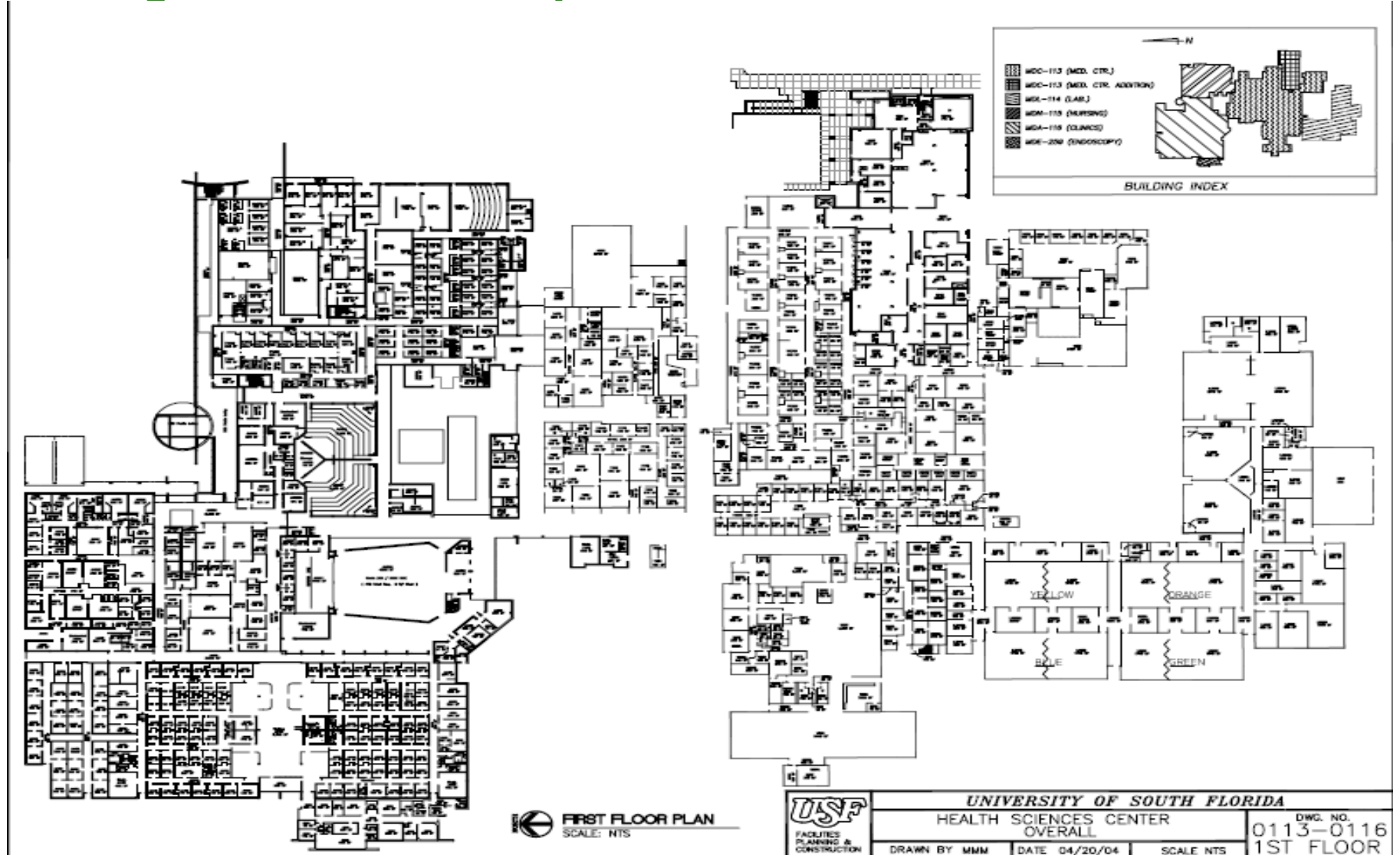
- **Project Site Location**
- **Project Scope Outline**
- **Project Program/Needs**
- **Phasing/Scheduling**

USF – Health Facilities Planning and Construction College of Medicine Improvements



USF – Health Facilities Planning and Construction

College of Medicine Improvements



11/25/2009

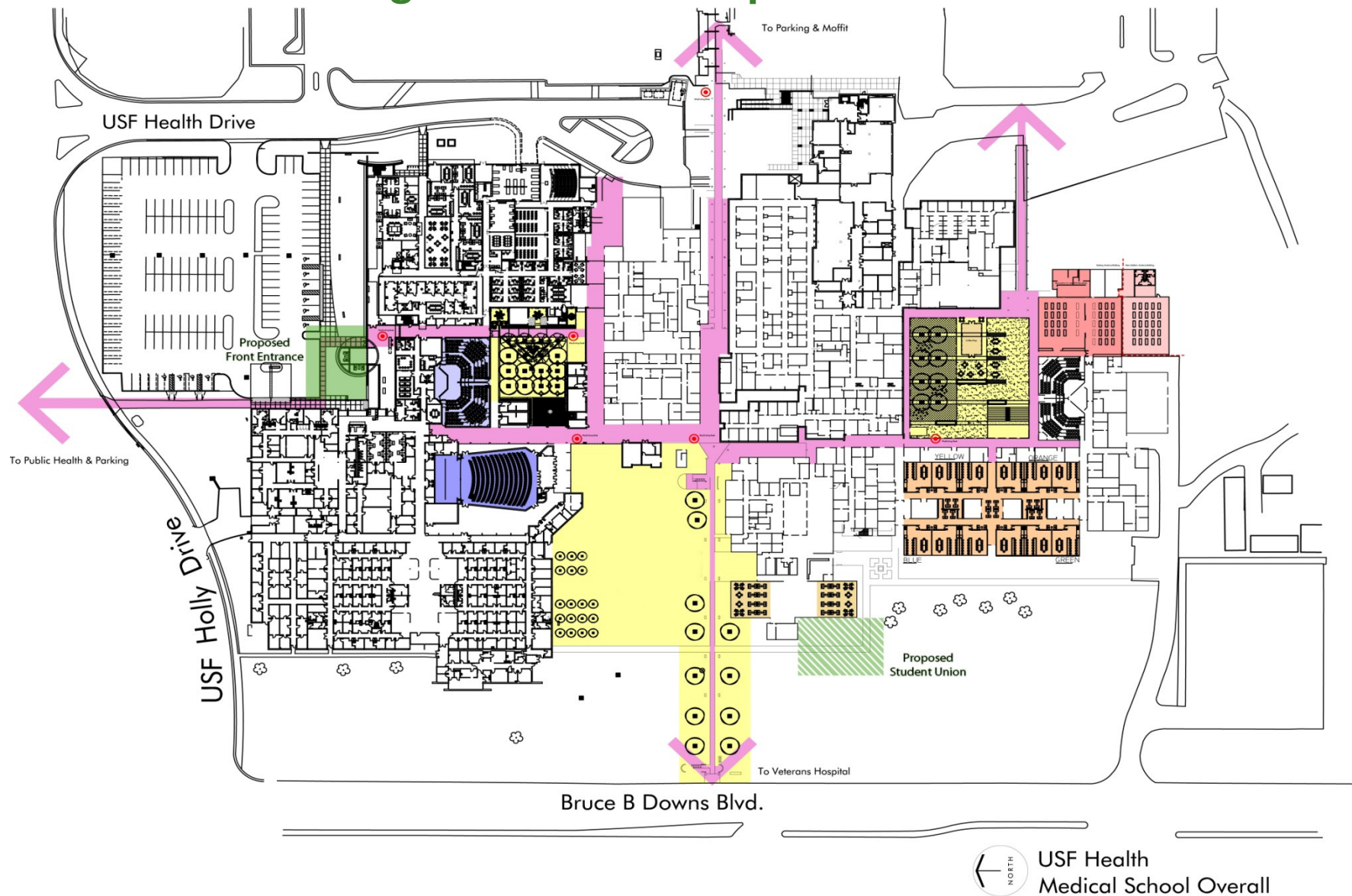
USF – Health Facilities Planning and Construction

College of Medicine Improvements

Project Scope: This COM Improvement Package effort will focus on several areas of the HSC campus. These areas are as follows:

- Renovate Existing Auditorium
(includes State-of-the-Art A/V Package)
 - Renovate Existing 1096/1097 Lecture Halls
(includes A/V & Improved Lighting)
 - Develop Small Group Learning Spaces
(Includes State-of-the-Art A/V & IT Technology)
 - Anatomy Lab Renovations/Improvements
 - HSC Primary District Way-Finding
 - North and South Courtyard Improvements
-

USF – HSC College of Medicine Improvements



11/25/2009

Overall COM Site Improvement Plan

USF – Health Facilities Planning and Construction

College of Medicine Improvements

Auditorium Space

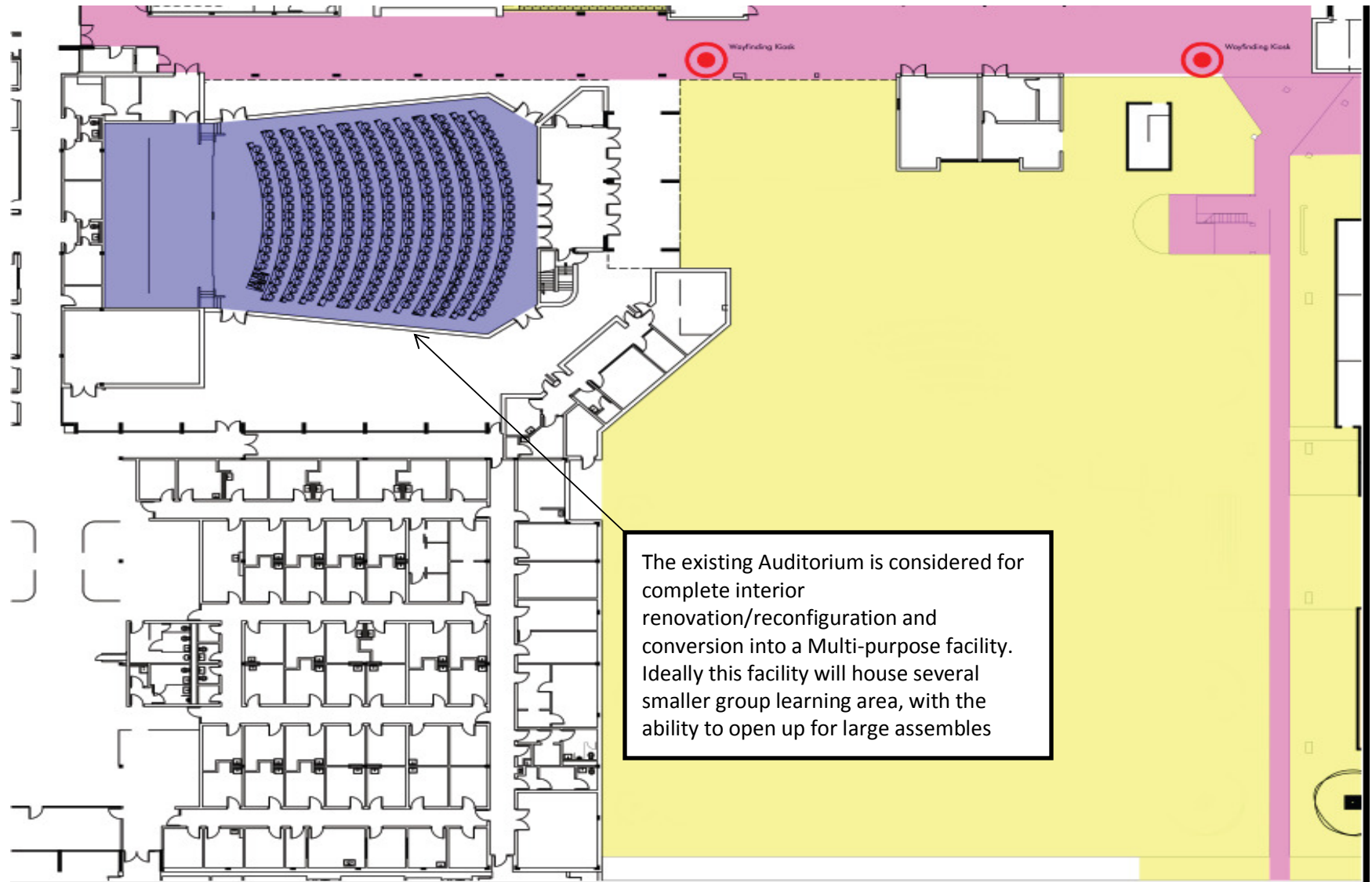
USF – Health Facilities Planning and Construction

College of Medicine Improvements

Auditorium Existing Conditions

- **Two-tier Structure (High Ceiling)**
- **Approximately 8,000 SF in area**
- **Fixed Auditorium Seating**
- **Current Seating Capacity 478**
- **Limited IT and AV Technology**

USF – HSC Facilities Planning and Construction



USF – Health Facilities Planning and Construction College of Medicine Improvements



USF – Health Facilities Planning and Construction College of Medicine Improvements



USF – Health Facilities Planning and Construction College of Medicine Improvements

Auditorium Programmatic Needs

Capacities:

- **Ability to accommodate 300 students**
- **Breakout/Small Group Mix (6 rooms/50pers)**

Function Capability:

- **Sound Proofing**
- **Ability for Instructor interaction w/ students, aisles for Instructor access**
- **Team Based Learning Environment**
- **Computer Based Learning**
- **Capacity for Audience Response**

USF – Health Facilities Planning and Construction

College of Medicine Improvements

Auditorium Programmatic Needs

IT/AV Equipment or Capabilities:

- **Wi-Fi for every student to use @ once**
- **Desk/Learning Space Computer Plug-in for each Student**
- **Video Conference/Streaming**
- **Ability to give computerized exams**
- **Audio Response Capability (ARS)**
- **Lecture Video Recording Ability**

USF – Health Facilities Planning and Construction

College of Medicine Improvements

1096/1097 Lecture Hall Spaces

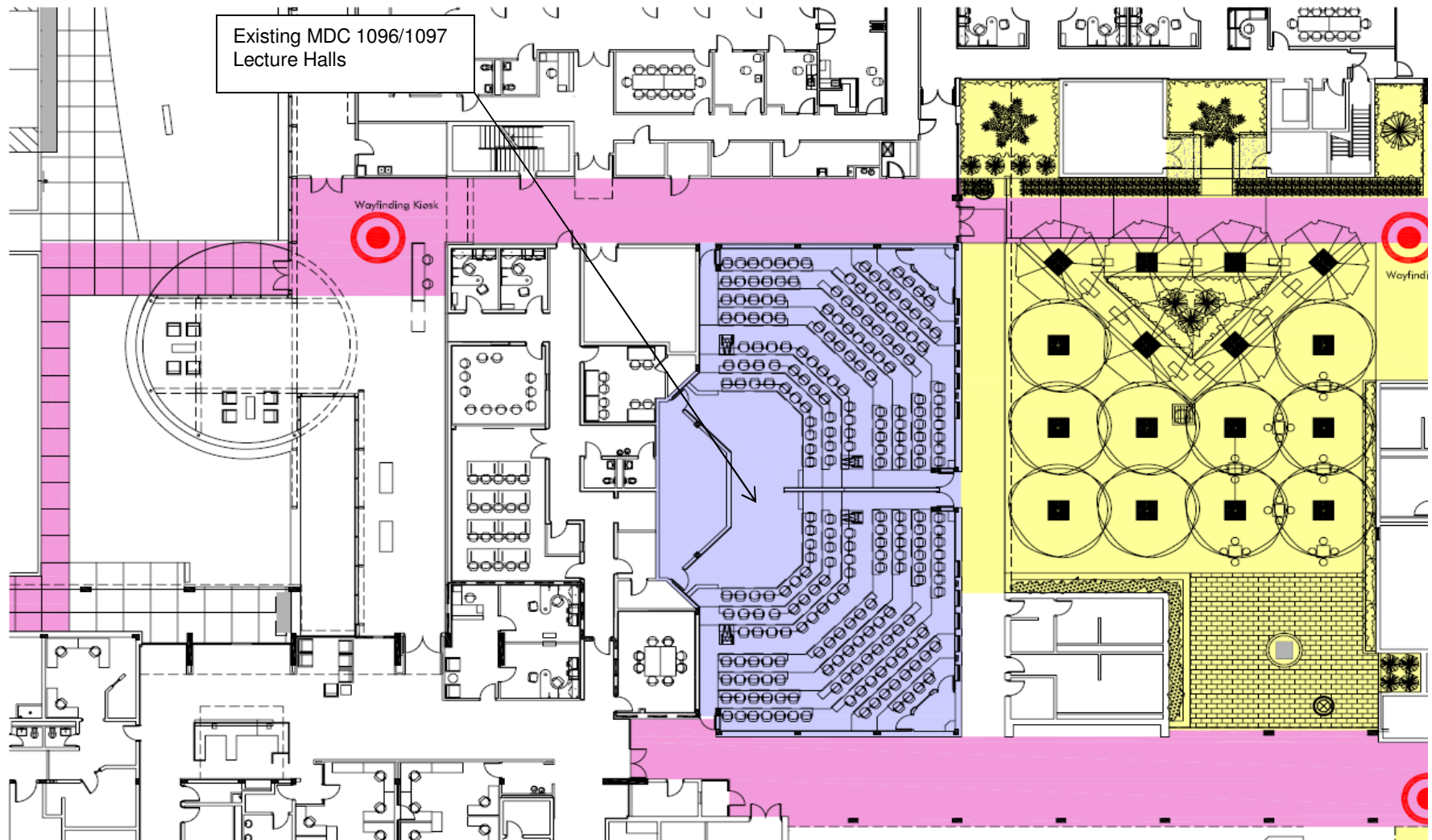
USF – Health Facilities Planning and Construction

College of Medicine Improvements

Lecture Hall 1096/1097 Existing Conditions

- **Approximately 5,000 SF in area**
- **Fixed Auditorium Seating**
- **Current Seating Capacity – 158/Hall**

USF – HSC Facilities Planning and Construction



USF – Health Facilities Planning and Construction

College of Medicine Improvements

Lecture Hall Programmatic Needs

Capacities:

- **Ability to accommodate 200 students**
- **Breakout/Small Group Mix (2 or 4 spaces)**

Function Capability:

- **Sound Proofing**
- **Ability for Instructor interaction w/ students, aisles for access**
- **Team Based Learning Environment**
Need aisles for instructor access, chairs that swivel fully for student interaction between rows

USF – Health Facilities Planning and Construction

College of Medicine Improvements

Lecture Hall Programmatic Needs

IT/AV Equipment or Capabilities:

- **Wi-Fi for every student to use @ once**
- **Desk/Learning Space Computer Plug-in for each Student**
- **Video Conference/Streaming**
- **Ability to give computerized exams**
- **Audio Response Capability (ARS)**
- **Lecture Video Recording Ability**

USF – Health Facilities Planning and Construction

College of Medicine Improvements

Small Group Learning Spaces

USF – Health Facilities Planning and Construction College of Medicine Improvements

MDL Student Lab Existing Conditions

- **Existing Wet Lab/Casework Arrangement**
- **Approximately 16,600 SF in area**
- **Limited IT and AV Technology**

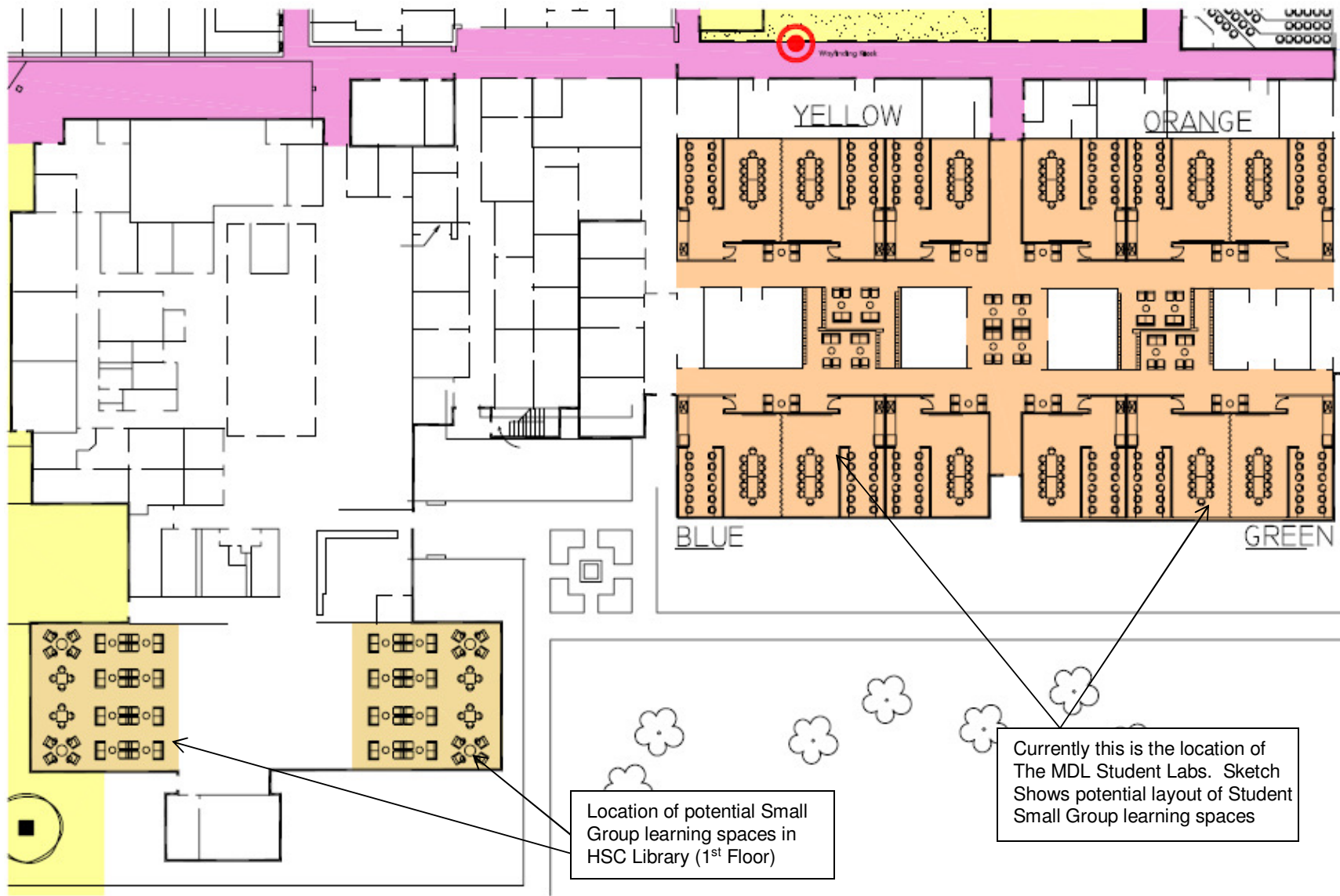
The floor plan of the 10th floor is divided into four main color-coded sections, each with a large zigzag line separating it from the others:

- YELLOW (Top Left):** Contains rooms L1036 (1749 SF), L1037 (1749 SF), L1048 (227 SF), L1001 (727 SF), L1035 (288 SF), L1044 (164 SF), L1043 (180 SF), L1042 (180 SF), L1043A (200 SF), L1041 (260 SF), and L10412 (666 SF).
- ORANGE (Top Right):** Contains rooms L1030 (1749 SF), L1028 (1749 SF), L1002 A (335 SF), L1002 (329 SF), L1000 (228 SF), L1034 (42 SF), L1033 (250 SF), L1032 (1354 SF), L1030A (372 SF), L1030B (372 SF), L1030C (372 SF), L1030D (372 SF), L1030E (372 SF), L1030F (372 SF), L1030G (372 SF), L1030H (372 SF), L1030I (372 SF), L1030J (372 SF), L1030K (372 SF), L1030L (372 SF), L1030M (372 SF), L1030N (372 SF), L1030O (372 SF), L1030P (372 SF), L1030Q (372 SF), L1030R (372 SF), L1030S (372 SF), L1030T (372 SF), L1030U (372 SF), L1030V (372 SF), L1030W (372 SF), L1030X (372 SF), L1030Y (372 SF), L1030Z (372 SF).
- BLUE (Bottom Left):** Contains rooms L1040 (1749 SF), L1038 (1749 SF), L1039A (337 SF), L1039B (337 SF), L1039C (372 SF), L1039D (372 SF), L1039E (372 SF), L1039F (372 SF), L1039G (372 SF), L1039H (372 SF), L1039I (372 SF), L1039J (372 SF), L1039K (372 SF), L1039L (372 SF), L1039M (372 SF), L1039N (372 SF), L1039O (372 SF), L1039P (372 SF), L1039Q (372 SF), L1039R (372 SF), L1039S (372 SF), L1039T (372 SF), L1039U (372 SF), L1039V (372 SF), L1039W (372 SF), L1039X (372 SF), L1039Y (372 SF), L1039Z (372 SF).
- GREEN (Bottom Right):** Contains rooms L1029 (1749 SF), L1027 (454 SF), L1026 (628 SF), L1025 (1046 SF), L1018 (112 SF), L1021 (117 SF), L1021A (117 SF), L1022 (306 SF), L1023 (120 SF), L1024 (128 SF), L1017 (1158 SF), L1017A (283 SF), L1015 (261 SF), L1016 (261 SF), L1017B (283 SF), L1017C (283 SF), L1017D (283 SF), L1017E (283 SF), L1017F (283 SF), L1017G (283 SF), L1017H (283 SF), L1017I (283 SF), L1017J (283 SF), L1017K (283 SF), L1017L (283 SF), L1017M (283 SF), L1017N (283 SF), L1017O (283 SF), L1017P (283 SF), L1017Q (283 SF), L1017R (283 SF), L1017S (283 SF), L1017T (283 SF), L1017U (283 SF), L1017V (283 SF), L1017W (283 SF), L1017X (283 SF), L1017Y (283 SF), L1017Z (283 SF).

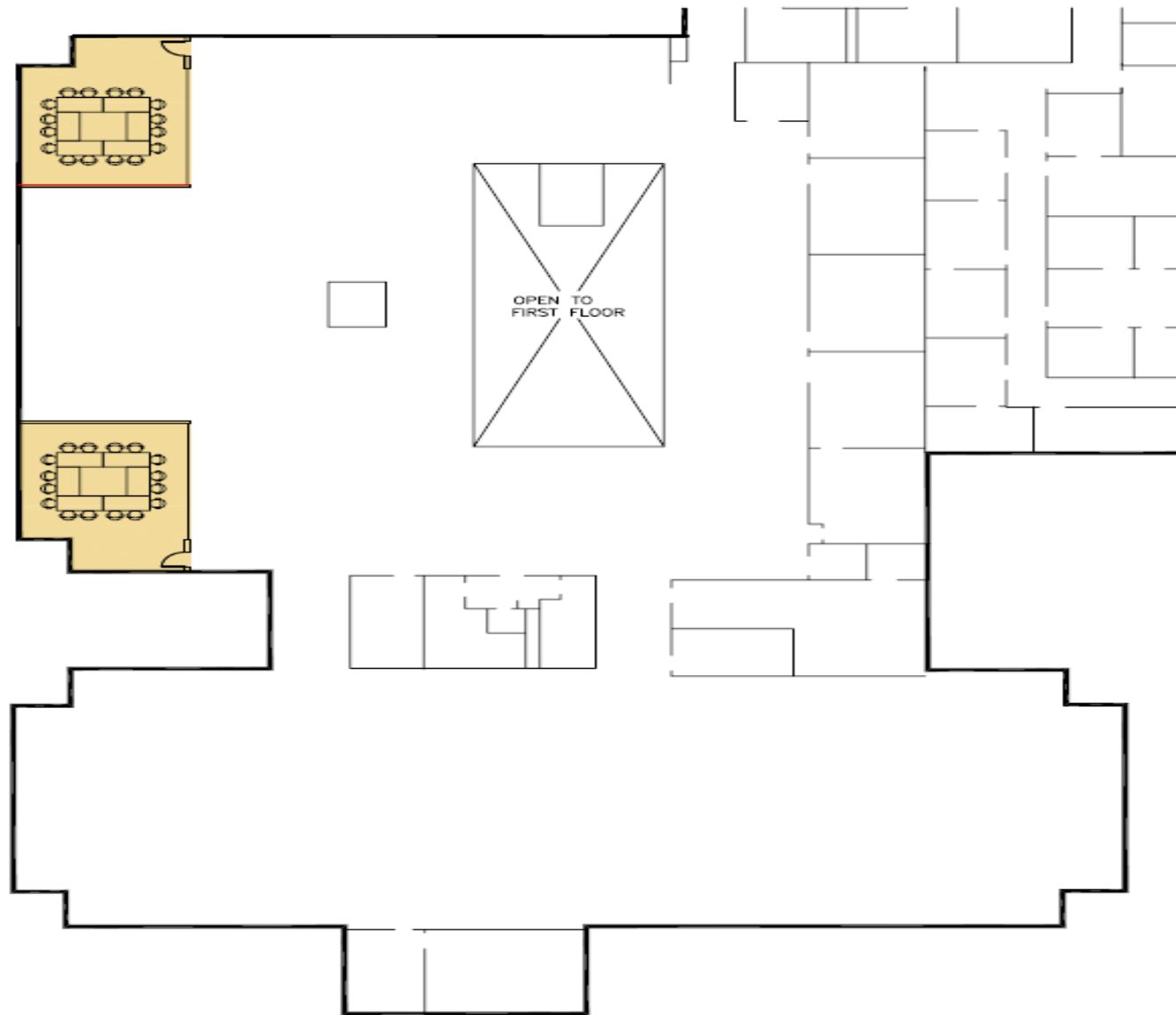
USF – Health Facilities Planning and Construction College of Medicine Improvements



USF – HSC Facilities Planning and Construction



USF – HSC Facilities Planning and Construction



USF – Health Facilities Planning and Construction College of Medicine Improvements

Small Group Learning Programmatic Needs

Capacities:

- **Accommodate 180 students – Year 1**
- **Accommodate 180 students – Year 2**
- **Group learning areas shall total @ least 8**
- **Each learning space shall seat 25 students**

USF – Health Facilities Planning and Construction College of Medicine Improvements

Small Group Learning Programmatic Needs

Function:

- **Soundproof Multi-Function Flexible Walls**
- **Individual Study Spaces**
- **Group Study Spaces**
- **Group Instruction Spaces**
- **Ability to deliver computerized exams**
- **Facility should have ability to open completely**

USF – Health Facilities Planning and Construction College of Medicine Improvements

Small Group Learning Programmatic Needs

IT/AV Equipment Requirements:

- **Flat Screens (ability to show pathology slide to several group spaces)**
- **Wi-Fi for every student to use @ once**
- **Desk/Learning Space/Computer Plug-in for each station**
- **Computer stations to accommodate memory intense data micro slides, not amenable to WiFi.**
- **Capability for audience response**
- **Video Conference/Streaming**

USF – Health Facilities Planning and Construction

College of Medicine Improvements

Anatomy Laboratory Space

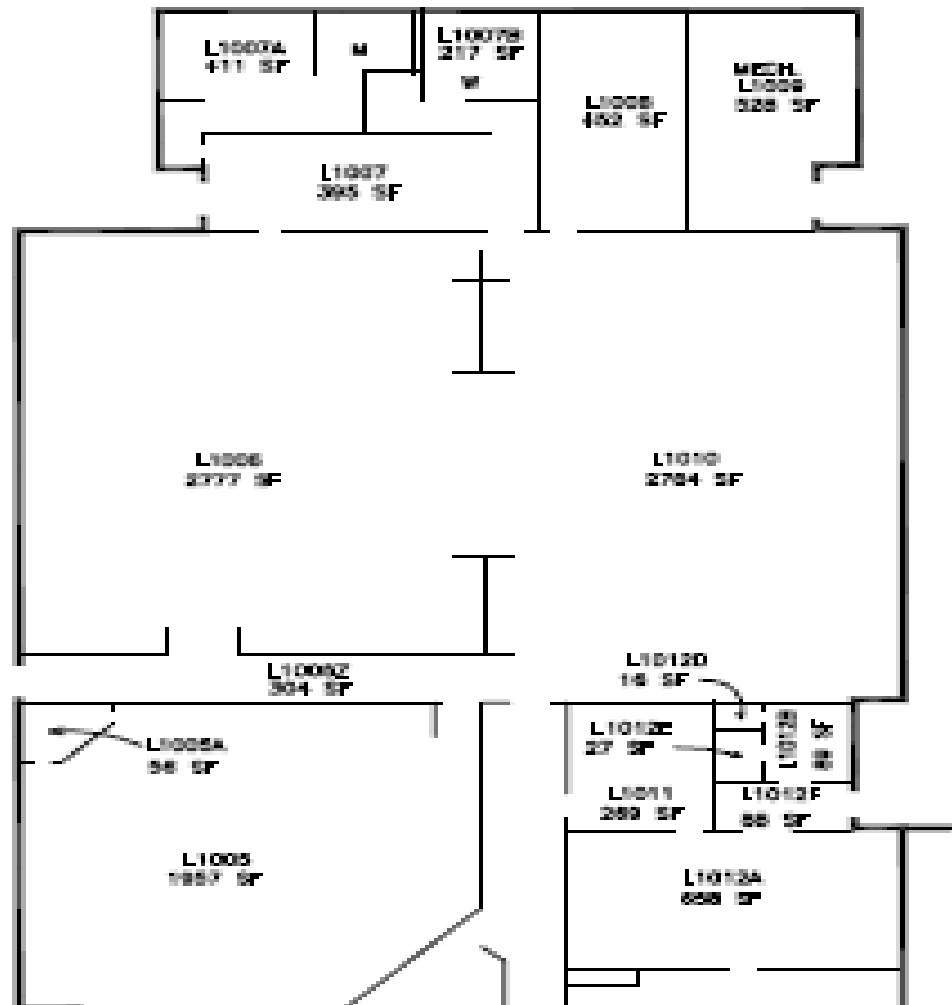
USF – Health Facilities Planning and Construction College of Medicine Improvements

Anatomy Lab Existing Conditions

- **Approximately 7,400 SF in area**
- **Lacks Latest in Medical Education Delivery**
- **Limited IT and AV Technology**

USF – Health Facilities Planning and Construction

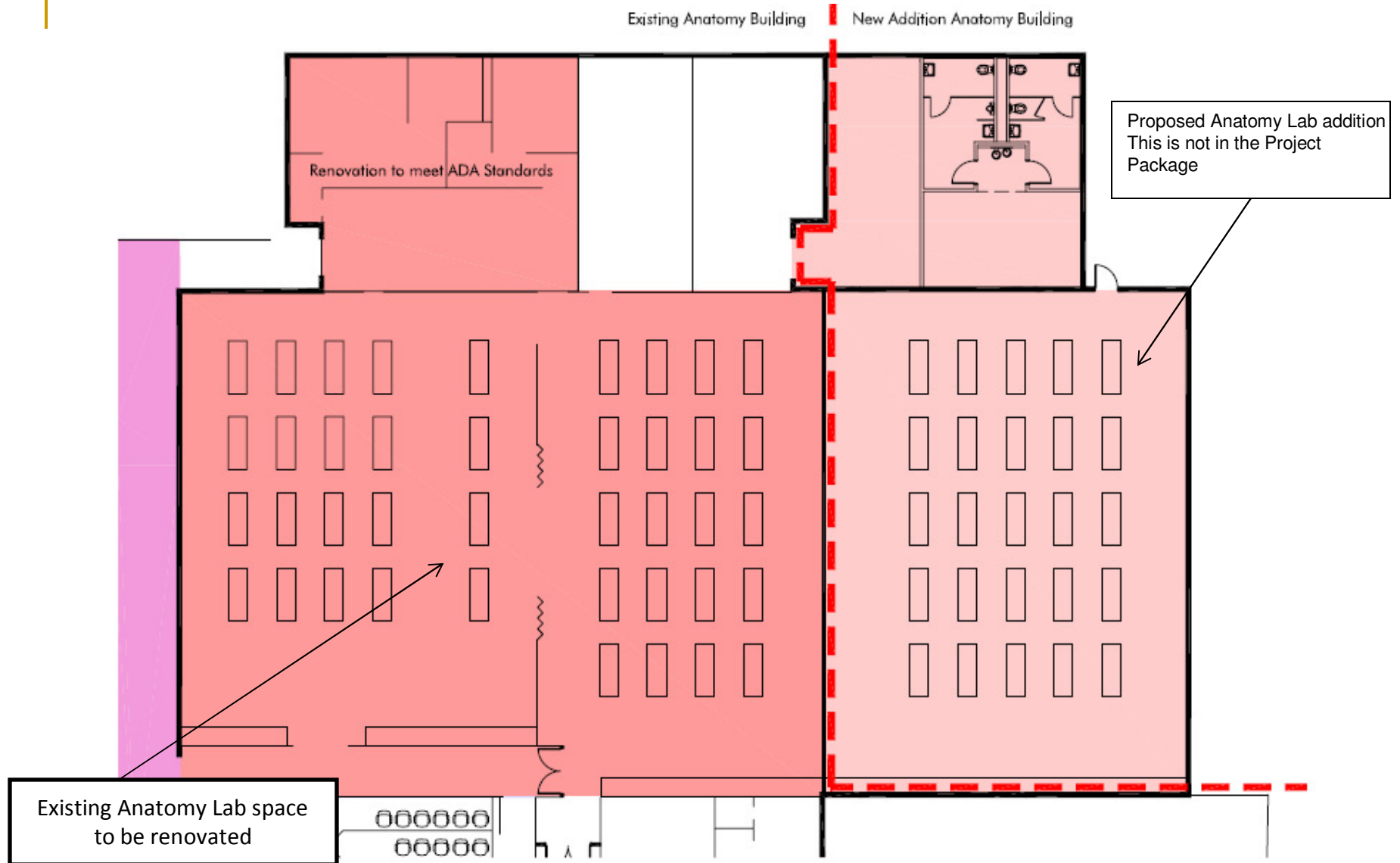
College of Medicine Improvements



USF – Health Facilities Planning and Construction College of Medicine Improvements



USF – HSC Facilities Planning and Construction



USF – Health Facilities Planning and Construction College of Medicine Improvements

Anatomy Lab Programmatic Needs

Capacities:

- **Ability to accommodate 300 students**
- **Groups of 4 students for table**

Function Capability:

- **Exam Space (practical exam set-up)**
- **Ability to walk around desk**
- **Cadavers/Pro-sections**
- **Electronic/Digital Learning station – each group/table should have computer image delivery capability**

USF – Health Facilities Planning and Construction

College of Medicine Improvements

Anatomy Lab Programmatic Needs

IT/AV Equipment Requirements:

- **Flat Screens around the room**
- **Virtual Microscopy**
- **Computerized Testing**
- **Video Recording**
- **Video Conference/Streaming**

USF – Health Facilities Planning and Construction

College of Medicine Improvements

HSC Courtyards

USF – Health Facilities Planning and Construction College of Medicine Improvements

North & South Courtyards Existing Conditions

- **North Courtyard 7,112 SF**
- **South Courtyard 16,900 SF**
- **Structural Surface Failure**
- **Disconnected – Under Utilized**

USF – Health Facilities Planning and Construction College of Medicine Improvements



USF – Health Facilities Planning and Construction College of Medicine Improvements



USF – Health Facilities Planning and Construction College of Medicine Improvements

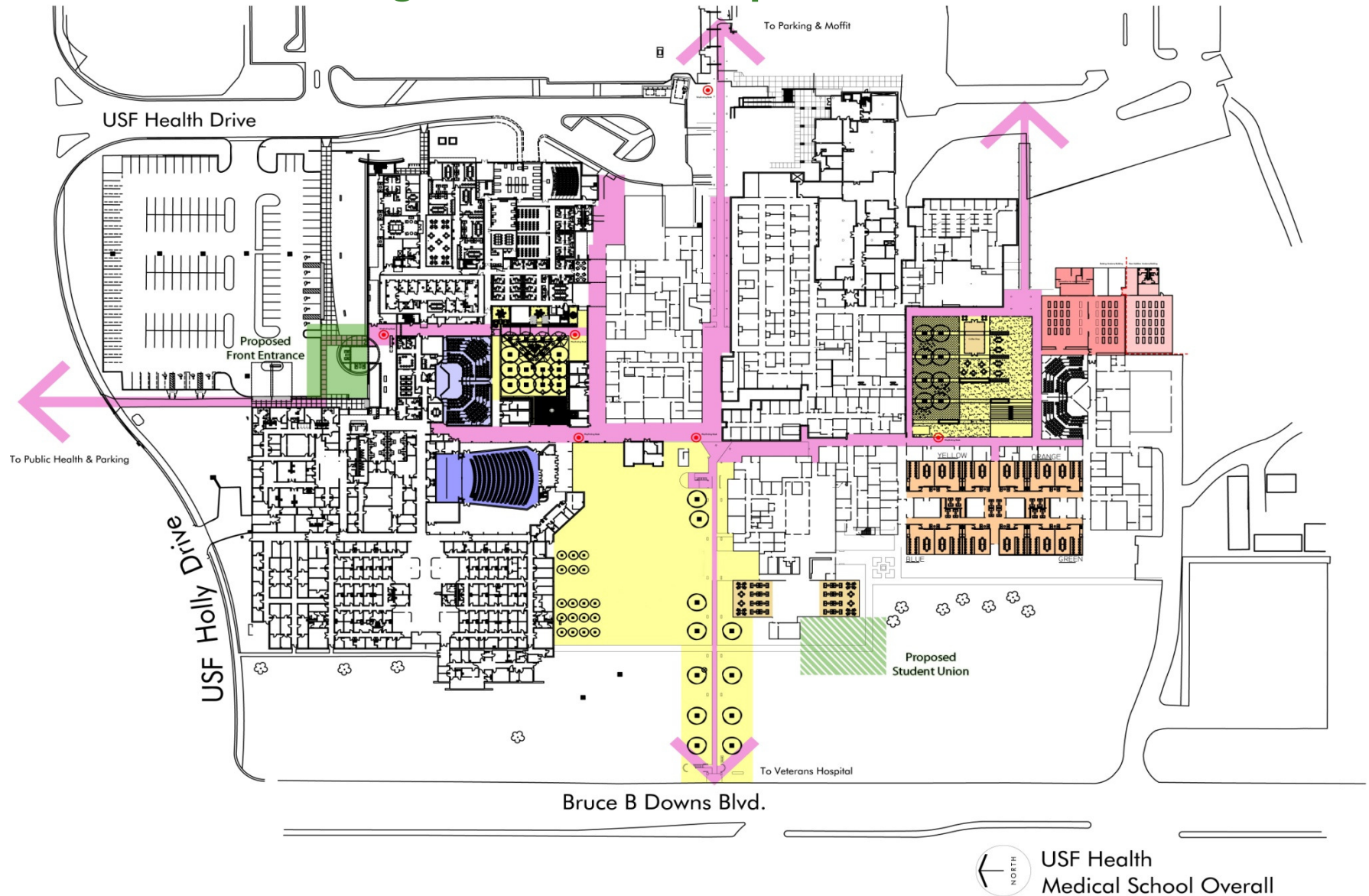


USF – Health Facilities Planning and Construction

College of Medicine Improvements

HSC Way-Finding

USF – HSC College of Medicine Improvements



11/25/2009

Overall COM Site Improvement Plan

USF – Health Facilities Planning and Construction College of Medicine Improvements



USF – Health Facilities Planning and Construction COM Improvements – *Tentative* Timetable Schedule/Milestones

- Select Design Team (Jan 2010)
- **Target Schedule Auditorium Construction Start –
(Summer 2010 - August)**
- Auditorium Construction Completed by Fall 2011
- Lecture Hall 1097/1096 Construction Completed by 2012
- Student Lab Conversion to Study Rooms Completed (TBD)
- Courtyard Improvements (TBD)
- Way-Finding Improvements (TBD)

USF – Health Facilities Planning and Construction

College of Medicine Improvements

END

