

Creating a  
healthier world.

# Public Health



University of South Florida College of Public Health  
**our practice is our passion.**



# Advisors of Public Health



*Meleíne Desir*



*Annette Strzelecki*



*Thanh Le*

# Academic Advisors



## Purpose:

- ✓ Support system for your academic success
- ✓ University connection/resources
- ✓ Requirements & Registration
- ✓ Policies and guidelines

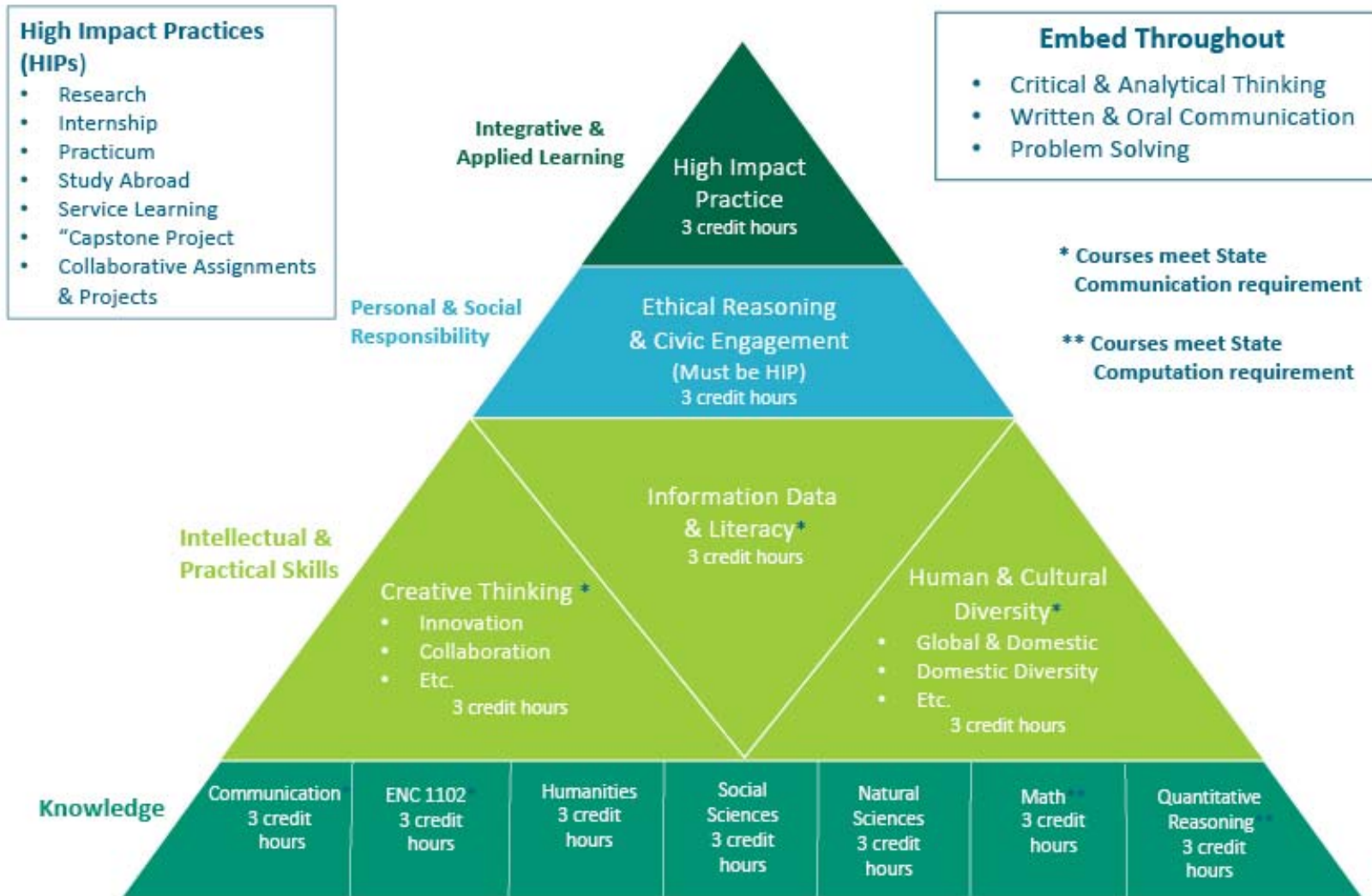
## Appointments:

- ✓ Archivum: in person or phone
- ✓ Walk-in Advising

## Resources:

- ✓ Weekly Emails
- ✓ Social Media

# Enhanced Gen Ed. Core





# What is Public Health?



University of South Florida College of Public Health  
**our practice is our passion.**



# Public Health vs. Medical Field

## Emphasis

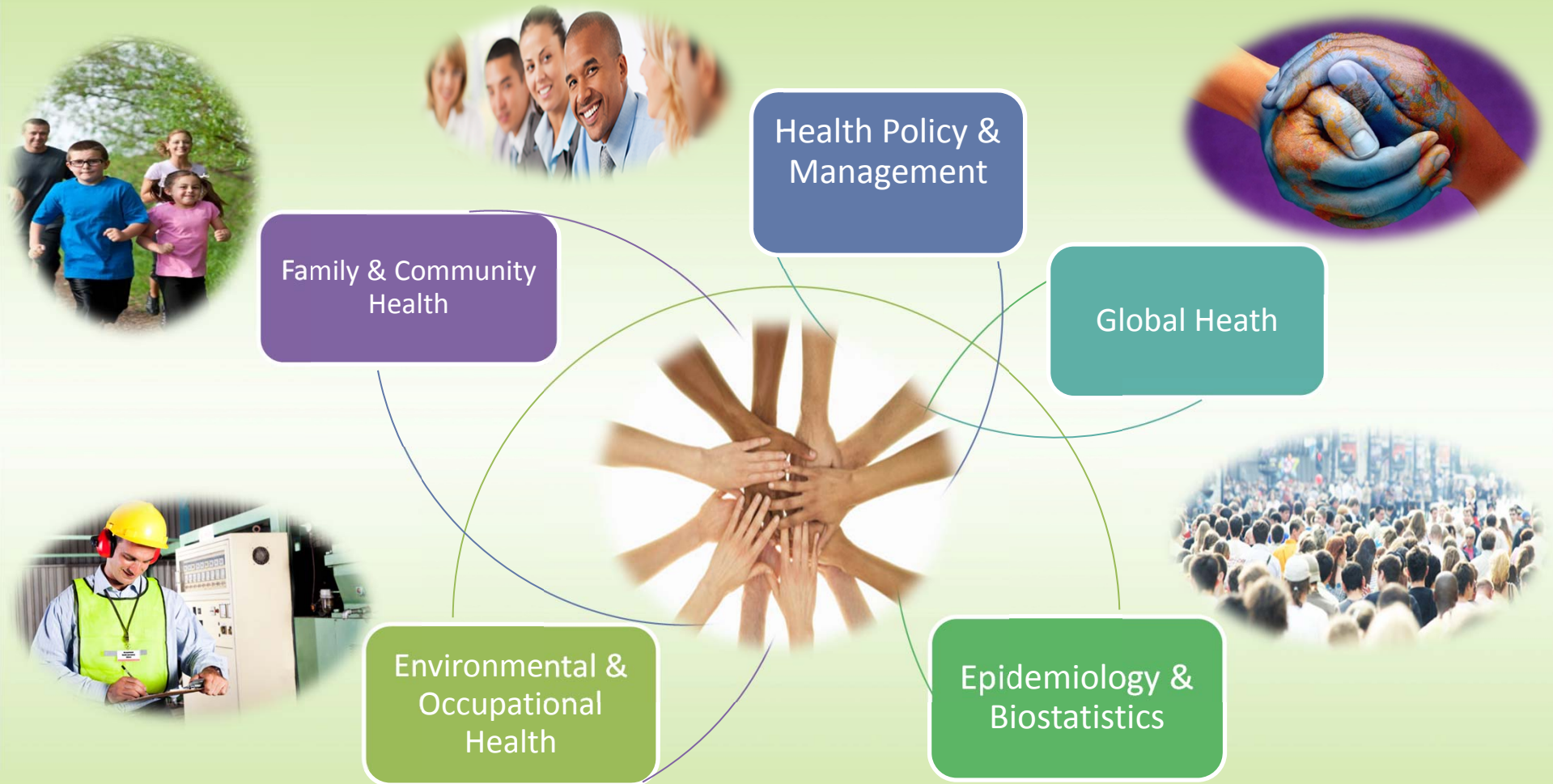
- **Public Health** – 3 P's: **Promotion** of healthy lifestyles, **Prevention** of diseases and injuries, working with **Populations**.
- **Medical Field** – Diagnose & Treat

## Serving People

- **Public Health** – Work with populations & communities
- **Medical Field** – Work with patients and individuals



# Areas in Public Health



University of South Florida College of Public Health  
**our practice is our passion.**



# Public Health Employment

- **Health Departments:**
  - Surveillance and tracking of communicable disease
  - Environmental Inspections
  - Emergency Preparedness & Disaster management
  - HIV/STD testing
  - Wellness Programs
- **Laboratory and Research**
  - Chronic and Infectious diseases
- **Local hospitals:**
  - Finance, billing, medical records, labs, admissions/collections, manage integrations of medical care, scientific advancements, novel wellness programs.





# Continued...

- **Schools and Universities:**
  - Health Education
  - Instruction
- **Non-profit organizations:**
  - Healthy Start, March of Dimes, American Cancer Assoc.(ACS), American Heart Assoc. (AHA), Big Brothers / Big Sisters, etc...
  - Health Communication & Outreach
- **Hospitals and Clinics:**
  - Health Administration & Management
  - Health Policies and Laws
- **Health Insurance Companies:** claim processing, case managing, sales.
- **Federal Government:**
  - Veteran's Administration hospital
  - Center for Disease Control (CDC)
  - Civilian jobs in military



# Bachelor of Science in Public Health



University of South Florida College of Public Health  
**our practice is our passion.**



# Required Core Course

30  
Credit  
Hours

- ☐ Overview of PH Programs/Policies
- ☐ Intro to Environmental & Occupational Health
- ☐ Introduction to Epidemiology
- ☐ Health, Behavior, and Society
- ☐ Intro to Health Disparities & Social Determinants
- ☐ Foundations of Global Health
- ☐ Understanding U.S. Healthcare
- ☐ Biostatistics in Society
- ☐ Survey of Human Disease
- ☐ Workforce and Leadership

\*We provide online options for many of our courses

Creating a  
healthier world.

# Skills Requirement

12  
Credit  
Hours

- Foundation of Public Health Writing
- Critical Issues in Public Health
- Foundation of Evaluation and Research
- **Pick One:**
  - Healthcare Ethics
  - Intro to GIS (Geographic Information System)
  - USF Study Abroad
  - Medical Terminology

University of South Florida College of Public Health  
**our practice is our passion.**





# Electives/Specializations

12 Credit  
Hours

## Nutrition

- Sports Nutrition
- Nutrition & Disease
- Food & Culture
- Foundation of Food Safety

## Infection Control

- Foundation of Infection Control
- Foundation of PH Immunology
- Emerging Infectious Disease
- Foundation of Food Safety

## Health Education

- Health Education Theory & Behavior
- Intervention Program Planning and Management
- Health Education Methods, Communication, and Advocacy
- Foundation of Evaluation & Research
- Select One: Foundation of Maternal/Child Health or Women's Health

## Environmental & Occupational Health

- Principles of Toxicology
- Environmental Health Science
- EOH Risk Analysis
- Occupational Health & Safety

## Global Health

- PH Emergencies in Large Populations
- Public & Private Sector Continuity Planning for Emergencies
- Community Participation in Homeland Security/Disaster Preparation
- Disaster by Design: Exercise Development for Homeland Security Professionals

## Lower Level Electives

- Intro to Public Health
- Contemporary Health Science
- Sex, Health, & Decision Making
- Careers in Public Health
- Nutrition

# What do I do with my extra credits?

Pick up a minor



- Become more specialized
- Resume builder
- Conversation starter for interviews

EXTRA  
CREDITS



Pre Health Profession Prerequisites



- Physical Therapy
- Occupational Therapy
- Medicine
- Pharmacy
- Physician
- Optometry

# Are you a pre-health/pre-med student?



**(Bachelors Degree + Application Requirement) = Apply to program**

**Medical School**  
**Physicians Assistant**  
**Physical Therapy**  
**Dentistry**  
**Pharmacy**  
**Optometry**  
**Chiropractor**  
**Veterinarian**  
**Athletic Training Programs**



University of South Florida College of Public Health  
**our practice is our passion.**



# Pre-Health/Pre-Med Track

- **Public Health**

Diseases, health promotion, healthcare, health policies/laws, research, humanitarian relief, disaster management, emergency planning, nutrition, health education, epidemics, and much more!

- **Requirements to apply to medical program:**

1. Science Pre-req courses
2. Entrance exam: MCAT, PCAT, OAT, DCAT, GRE, ETC...
3. Competitive GPA
4. Experiences: Clinical volunteering, community volunteering, shadowing, student organizations, research, study abroad, leadership experiences, internships, jobs, etc...

- Pre-Health Advising for public health students available



# How do I track my progress?



## DegreeWorks

University of South Florida College of Public Health  
**our practice is our passion.**



# FKL's & General Education Core

## Enhanced General Education Core Requirements

Academic Year: Catalog 2019-2020

### Unmet conditions for this set of requirements:

You must complete 36 Credit Hours in General Education Courses. You currently have 0 Credit Hours and still need 36.

Minimum 2.00 GPA required in the Enhanced General Education Courses. Enhanced General Education Courses may also satisfy State Communication and Computational and/or State Mandated Requirements for particular MAJORS. Please consult with your advisor for clarification.

### ENHANCED GENERAL EDUCATION CORE

#### Enhanced General Education Requirements

**Still Needed:** You must complete all of the following:

#### GENERAL EDUCATION KNOWLEDGE

( You must complete all of the following: ) and

##### Composition I

( 3 Credits in @ @ with Attribute SGEC ) and

##### Composition II

( 1 Class in ENC 1102\* ) and

##### Humanities

( 3 Credits in @ @ with Attribute SGEH ) and

##### Social Sciences

( 3 Credits in @ @ with Attribute SGES ) and

##### Natural Sciences

( 3 Credits in @ @ with Attribute SGEN ) and

##### Mathematics

( 3 Credits in @ @ with Attribute SGEM ) and

##### Quantitative Reasoning

( 3 Credits in @ @ with Attribute 6AMT )

#### GENERAL EDUCATION INTELLECTUAL & PRACTICAL SKILLS

( You must complete all of the following: ) and

##### Creative Thinking

( 3 Credits in @ @ with Attribute TGEC ) and

##### Information and Data Literacy

( 3 Credits in @ @ with Attribute TGEI ) and

##### Human and Cultural Diversity

( 3 Credits in @ @ with Attribute TGED )

#### GENERAL EDUCATION PERSONAL & SOCIAL RESPONSIBILITY

( You must complete all of the following: ) and

##### Ethical Reasoning and Civic Engagement

( 3 Credits in @ @ with Attribute TGEE )

#### GENERAL EDUCATION INTEGRATIVE & APPLIED LEARNING

( You must complete all of the following: )

##### High Impact Practice

( 3 Credits in @ @ with Attribute TGEH )

University of South Florida College of Public Health  
our practice is our passion.



# Major on Degree Works

## Major in Public Health BS

Academic Year: Catalog 2019-2020

### Unmet conditions for this set of requirements:

Fifty-Four (54) Credits are Required. You currently have 0, you still need 54 more Credits.  
Major GPA Overall USF coursework must be a 2.0 You have not satisfied this requirement.

Your Overall USF Major GPA is 0.00 .

### ☐ PUBLIC HEALTH MAJOR COURSES: 30 Credit Hours

|   |  |
|---|--|
| <input type="checkbox"/> Overview of Public Health Programs & Policies      | Still Needed: 3 Credits in <b>PHC 4101</b> |
| <input type="checkbox"/> Intro to Environmental & Occupational Health       | Still Needed: 3 Credits in <b>PHC 3302</b> |
| <input type="checkbox"/> Intro to Epidemiology                              | Still Needed: 3 Credits in <b>PHC 4030</b> |
| <input type="checkbox"/> Foundations of Global Health                       | Still Needed: 3 Credits in <b>HSC 4624</b> |
| <input type="checkbox"/> Introduction to Health Disparities & Social Determ | Still Needed: 3 Credits in <b>PHC 4464</b> |
| <input type="checkbox"/> Biostatistics in Society                           | Still Needed: 3 Credits in <b>PHC 4069</b> |
| <input type="checkbox"/> Health, Behavior, & Society                        | Still Needed: 3 Credits in <b>HSC 4211</b> |
| <input type="checkbox"/> Understanding U.S. Health Care                     | Still Needed: 3 Credits in <b>HSC 4630</b> |
| <input type="checkbox"/> Survey of Human Disease                            | Still Needed: 3 Credits in <b>HSC 4551</b> |
| <input type="checkbox"/> Workforce and Leadership Development               | Still Needed: 3 Credits in <b>PHC 4117</b> |

### ☐ SKILLS COURSES: 12 Credit Hours

|  |  |
|--|--|
| <input type="checkbox"/> Foundation of Prof Writing in Public Health (FKL Writing) | Still Needed: 3 Credits in <b>PHC 4720</b>   |
| <input type="checkbox"/> Critical Issues in Public Health (FKL Capstone)           | Still Needed: 3 Credits in <b>HSC 4631</b>   |
| <input type="checkbox"/> Foundations of Evaluation and Research in Public Health   | Still Needed: 3 Credits in <b>PHC 4755</b>   |
| <input type="checkbox"/> Choose One of the Following Courses:                      | Still Needed: 1 Class in <b>HSC 4537</b> or <b>PHC 4140</b> or <b>4931</b> or <b>4942*</b> |

### ☐ ELECTIVES

The lower-level course electives are not required for the major, but two courses may be taken and applied toward the total degree hour's requirement (120 hours)

|   |   |
|---|---|
| <input type="checkbox"/> Electives/Specializations Courses: 12 Credit Hours | Still Needed: 12 Credits in <b>HSC 2017</b> or <b>2100</b> or <b>2130</b> or <b>2531</b> or <b>3503</b> or <b>3541</b> or <b>4134</b> or <b>4140</b> or <b>4172</b> or <b>4213</b> or <b>4430</b> or <b>4504</b> or <b>4573</b> or <b>4579</b> or <b>HUN 2201</b> or <b>3126</b> or <b>3272</b> or <b>3296</b> or <b>PHC 2100</b> or <b>3320</b> or <b>4031</b> or <b>4032</b> or <b>4141</b> or <b>4188</b> or <b>4234</b> or <b>4375</b> or <b>4376</b> or <b>4501</b> or <b>4582</b> |
|---|---|

University of South Florida College of Public Health  
our practice is our passion.



# Academic Policies

- First Day Attendance – Mandatory
- First week: Add/Drop courses
- FY Advising Hold
- Withdrawal Deadlines:
  - 10<sup>th</sup> week
  - Summer A: 7<sup>th</sup> week
  - B: 4<sup>th</sup> week
  - C: 4<sup>th</sup> week
  - 3 before 60 hours, 2 after
- Excess Credit Hours
- Minors
- ARC Petitions
- Concurrent Degrees and Double Majors





# Achieving Academic Success

## Tips:

- ✓ Attend all of your classes
- ✓ Follow a schedule each day
- ✓ Get to know your professor and ask for their help
- ✓ Use ALL of the Resources such as
  - Tutoring, Writing Studio, Career Services, Counseling Center, Advisors, Students with Disabilities Services
- ✓ Where do I buy my books?
  - ✓ FKL : USF Bookstore
  - ✓ Public Health: Health Sciences Bookstore (813) 974-2011

# Involvement and Opportunities

## Student Organizations

- Undergraduate Public Health Student Association
- Pre-Med American Medical Student Association



## Undergraduate Research

- Get started with research
- Research any topic of interest

## Study Abroad:

- Japan, London, Quebec, Panama, etc...

## USF Health Corps

- Volunteer Opportunities
- For Medical and Health majors

## Health Scholars Program

- Study abroad scholarship
- Attend a conference
- Do research
- Other professional and leadership opportunities



## Center for Leadership and Civic Engagement

- Provides service opportunities, leadership programs, and different services to get involved
- Ted talks
- Stampede to Service
- Bulls Service Breaks



University of South Florida College of Public Health  
**our practice is our passion.**





**Facebook:**

<https://www.facebook.com/CollegeOfPublicHealthUndergraduate>

**Twitter:** [https://twitter.com/USF\\_COPH\\_UG](https://twitter.com/USF_COPH_UG)

**Instagram:** <https://instagram.com/usfcoph>

University of South Florida College of Public Health  
**our practice is our passion.**



# Welcome to the College of Public Health!



University of South Florida College of Public Health  
**our practice is our passion.**

