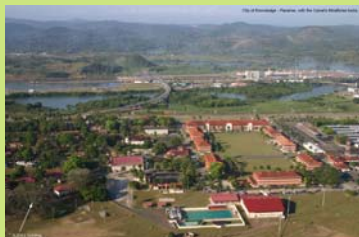




Date: 1/30/2006

## &gt;&gt; TAKE NOTE !



Campus of City of Knowledge

## City of Knowledge Foundation's Board of Trustees Approves USF's Proposal

The City of Knowledge Foundation's Board of Trustees approved USF's proposal to establish a Public Health Program in Panama, sponsored by USF's College of Public Health, in their January 19<sup>th</sup> meeting. The Public Health program will center around the education of leaders and professionals of the Americas, the generation of financial support for scientific research projects in alliance with the City of Knowledge, and the linking of education and research activities with field work initiatives and the promotion of improvements for health services in the Panama region. An affiliation agreement will be developed and signed in the near future.



the Moffitt Research Institute.

COPH Faculty, Staff and Students! You are invited to join Dr. Petersen and other USF Health Deans at USF's Second Annual Step-Up Florida Event

WHEN: Wednesday, Feb. 1<sup>st</sup>, 2006 from 11:00 am - 1:00 pm ('Kick-off' begins at 11:30 am and walk begins at 12 noon)

WHERE: USF Health campus, at the Southeast corner of Magnolia and Holly, by

WHAT: You can participate in a fun 1 mile walk, pick up FREE health education info and great prizes, and enjoy FREE healthy refreshments!

## Dr. Liller Visits the Bahamas to Discuss Collaboration

Dr. Liller traveled to the Bahamas from January 23-24 to discuss the development of formal collaborations between the Ministry of Health and the College of Public Health so that Bahamian students could enroll in our programs as non-degree, degree-seeking, or certificate students. Dr. Liller met with representatives from PAHO, the Minister of Health, the Chief Medical Officer, the Permanent Secretary, the Director of Public Health, the Director of Environmental Health Services, the Director of the National Emergency Management Agency and several more officials. She also met with about 50 students from nearby Colleges and Universities.

## USF Health Presents Tenth Annual miniMEDschool 2006

miniMEDschool will be held January 30 & February 6, from 6:30-9:00 pm, at the Tampa Bay Performing Art Center. For more information and to register, please visit:

<http://hsc.usf.edu/publicaffairs/newsreleases/minimedschool.html>. On February 6, Dr. Jay Wolfson is serving as MC and also speaking on

"Affording Drugs Under the 'New' Medicare D - Have You Figured it Out Yet?"



## &gt;&gt;Students



## Student Service and Research Information

Feel free to check out your new bulletin boards upstairs (located next to the copy center) with student service and research opportunities, as well as the display boards with handouts in the downstairs snack area.

## Research:

For information on additional internal (USF) and external funding opportunities for COPH students, go to <http://publichealth.usf.edu/officeresearch/fundingopp.html>. For more info on the Student Honorary Award for Research and Practice "SHARP" awards go to <http://publichealth.usf.edu/officeresearch/sharp.html>.

## Student Service:

To find out about additional service opportunities for the spring available through the USF Health Service Corps, COPH students may also look at the web site at <http://www.hsc.usf.edu/ahec/servicecorps.html> for more info about the USF Health Student Service Corps. The calendar at <http://my.calendars.net/servicecorps> as well as the web site at <http://www.hsc.usf.edu/ahec/hscvents.html> have been updated, and there are handouts at the display table near snack area.

Saturday Feb. 4: 2-4 PM - Love a Senior Day: Come enjoy an afternoon of sharing arts and crafts and music with senior citizens at Weinberg Village! Free refreshments, too! You will also be able to listen to some accomplished student musicians from our COPH and the new USF Health student orchestra! Please contact [ekent@hsc.usf.edu](mailto:ekent@hsc.usf.edu) to sign up and for driving directions.

Date: 1/30/2006

## &gt;&gt; Faculty

**Dr. Jay Wolfson Speaks at California Museum of Science**

Dr. Jay Wolfson was the featured speaker at the California Museum of Science program "Death and Dying", on Saturday 21 January 2006, in Los Angeles California.

**Dr. Karen Liller is Featured in USF Magazine**

Dr. Karen Liller was interviewed for the "Last Word" section of the Winter, 2005 USF Magazine.

**Dr. Michael Reid Participates in Meeting of the Board of FPHA**

Dr. Michael Reid, Department of Environmental and Occupational Health, participated as the College's liaison in the quarterly meeting of the Board of the Florida Public Health Association and in its Academic Committee on January 26 in Tampa.

## Alumni

**Alumni Update**

Jacqueline M. Johnston, MPH, is working for Catholic Charities on Busch Boulevard as a POWER Team Moderator and Prevention Specialist. Her contact information is as follows:  
Catholic Charities, DOSP  
2021 E. Busch Blvd.  
Tampa, FL 33612  
(813) 631-4370 ext. 228

Please submit news/information to Peggy Smith at [msmith3@hsc.usf.edu](mailto:msmith3@hsc.usf.edu)

## &gt;&gt; Administration

**PERT Certification Deadline - March 17, 2006**

The FALL 2005 PERT effort reports are currently under review and will be released as soon as they have been verified by HR and Research Compliance. At this time you will need to make sure that you can access GEMS - Self Service without any problems. The instructions for accessing GEMS - Self Service is noted below:

Access to Pert reports

You may access the PERT system and your effort report via:  
GEMS/GEMS Self Service:

<https://gems.fastmail.usf.edu/psp/gemspro/?cmd=login>

You will need your userid (**11 digit emplid**) and password. If you don't remember your ID and password, or if your password has expired, you can get the information by contacting the IT helpdesk <http://itsupportservices.custhelp.com> or send request to [helpdesk@admin.usf.edu](mailto:helpdesk@admin.usf.edu) or by contacting Betty Persky.

*Please remember it could take up to 24 hours to have password reset and obtain access to your PERT report. If you having problems accessing GEMS, please contact Betty Persky at 974-4609.*

## Links of Interest

---

[Meetings, Courses and Training Opportunities](#)

[Calls for Proposals](#)

[USF Health Funding Finds](#)

---

## &gt;&gt; CPH Center News

**Public Health Leadership Institute Holds Workshop in Sarasota**

The Public Health Leadership Institute of Florida (PHLIF) met for the third time this program year in Sarasota. The focus of this meeting was "*Leadership in Times of Crisis*" and included sessions on Crisis Leadership, Conflict Resolution, Risk Communication, and Media Effectiveness. Scholars worked together and with facilitators to define crisis leadership; consider conflict situations and defusing them; and create informative, concise messages to promote programs and interact with the media.

The 10th Class of PHLIF will next meet in Tallahassee for a Legislative Effectiveness program in March. This session will give scholars the opportunity to meet with their legislators, observe the legislative sessions in action, and speak with key members about the legislative process.

The application for the 11th Class of Scholars (beginning July 2006) is now available. Please visit the PHLIF website for more information ([www.hsc.usf.edu/phlif](http://www.hsc.usf.edu/phlif)).

## Important Dates

February 23, 2006

USF Health Research Day

Abstract submission deadline is January 13<sup>th</sup>. For more information go to <http://hsc.usf.edu>. You may contact Linda Ruldoph or Dr.

Phillip Marty for details at 974-5200