



Making Life Better

through Research, Education & Healthcare TM

Emergency Medicine Residency Program

Kelly P. O'Keefe, MD, FACEP
Program Director

Welcome to the Class of 2012 and
beyond!













- Our History:
 - TGH requested the creation of a program August 2001
 - USF GME unanimously approved the idea
 - Team Health agreed to partnership
 - RRC application submitted December 2001
 - Application approved on first submission!
 - First class of residents graduated June 2006



➤ TGH ED

- >70,000 patient visits per year, and growing!
- Adult, pediatric, and minor emergency care centers
- Level 1 trauma center for adults and pediatrics
- Major referral center for the west coast of Florida
- Transplant Center
- Regional Burn Center



- Team Health
 - Largest EM group in the country
 - Funds all aspects of the program outside of resident salaries
 - Tremendous support base and resources
 - Medical Director's and Risk Management Courses
 - Large Data Base
 - Employment Network
 - Unique partnership



- The Program Director:

- USAFA, University of Miami School of Medicine
- Geisinger Medical Center
- ACEP Teaching Fellowship
- Air Force Active Duty
- Very clinically oriented
- PD of Wilford Hall EM residency
- Medical Director experience (TH Medical Director of the Year)
- Community medicine and academic experience
- Created program here in 2003



- Faculty:
 - Tremendous clinical expertise
 - Proven leadership
 - Years of teaching experience in place
 - Past success at residency management

Our Residents...

- Very successful match every year so far...
- Expect the same this year!
- We are looking for residents who...
 - are not afraid of new territory
 - want the opportunity to make a positive impact that will last
 - are seeking leadership opportunities
 - will work hard to get the most out of their training



Mission Statement

To provide each resident with the **knowledge base, clinical experience, and value set** to successfully complete the training program, to pass the board examination, to provide **compassionate, high quality patient care**, and to **positively impact the development and direction of emergency medicine.**



Values

We will strive to inculcate these values into our residents and staff, as we believe them to be essential to accomplishing our mission:



- **INTEGRITY**
- **PROFESSIONALISM**
- **COMPASSION**
- **QUEST FOR KNOWLEDGE**
- **STRONG WORK ETHIC**





- We envision a residency that will...
 - allow each physician in training to **reach their full potential**
 - ensure that all **patients are always cared for in an excellent manner** within an ever-changing medical system
 - lay the foundation for continued **growth and learning throughout the physician's career**



➤ EM 1

- EM 3 months
- Pedi EM
- CCU
- MICU
- OB GYN
- Anesthesia / Ophtho
- Orthopedics
- Neurosurgery
- Medicine Wards
- Trauma surgery



- All interns are in the ED for July
- ATLS, ACLS, PALS, NALS end of June
- Introductory lectures
- Nursing shifts
- Clinical shifts
 - Start seeing emergent patients immediately



- Blue trauma alerts
 - Run solely by the EM program with trauma surgery back up if needed

- Red trauma alerts
 - Run by EM and trauma surgery programs
 - A shared responsibility
 - Airways managed by EM program with anesthesia back up if needed



➤ EM 2

- EM 5 months
- Psychiatry
- Pedi EM
- EMS
- CCU*
- PICU
- MICU
- Toxicology



➤ EM 3

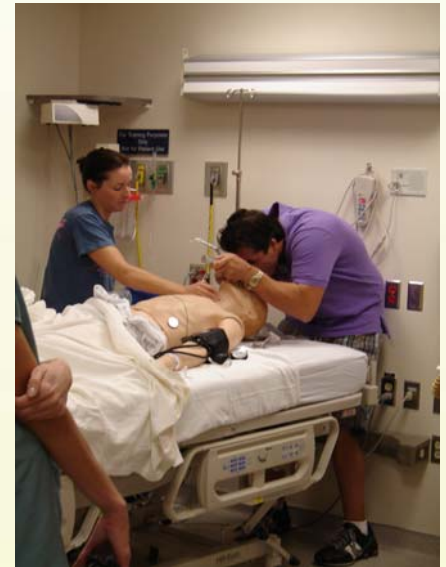
- EM 8 months
 - Adult
 - Pedi
 - Fast Track
- Elective
- Research
- Admin / CT / US
- Trauma / SICU



What's New?



- Five dedicated ED ultrasound machines
 - New Sonosite Turbo
- Global Emergency Medical Sciences
- Simulation program
- Third year medical school rotation
- Cadaver lab
- Fellowships
- Wellsoft
 - Electronic patient record,
 - tracking system, order entry
- Our new building opened November 2007
 - State of the art ED
 - All private rooms







- Why Us?
 - Excellent clinical material with high acuity
 - Proven residency success
 - Tremendous opportunity to make a contribution to a new program
 - Link with Team Health
 - Tampa





➤ Why Us?

- Leadership Curriculum
 - Medical Director's Course
 - ACEP Leadership Development Training
- International Medicine Experience
- Ultrasound Credentialing Track
- Administrative Experience
 - Business of Emergency Medicine





➤ Why Us?

➤ Nationally recognized teaching faculty

- Winner, ACEP 2006 National Teaching Award, Dr. Tracy Sanson
- Program Director with 12 years on the job
- Strong ultrasound experience
- State of the art ED
- ACEP Scientific Assembly and regional meetings
- INDUS India-US EM Conference
- Community and academic experience: real world results
- Business aspects of EM
- Leadership curriculum and opportunities
- The list goes on...



Common Questions



- 10 slots this match
- 5 hours of didactics per week
- Morning report
- Monthly reading and testing
- Daily, monthly, semiannual feedback
- 8-12 hour shifts
 - PGY-1 56-58 hrs/wk
 - PGY-2 54 hrs/wk
 - PGY-3 50 hrs/wk



Common Questions

- Division versus Department
- Department of Emergency Medicine at TGH



Where are they now?

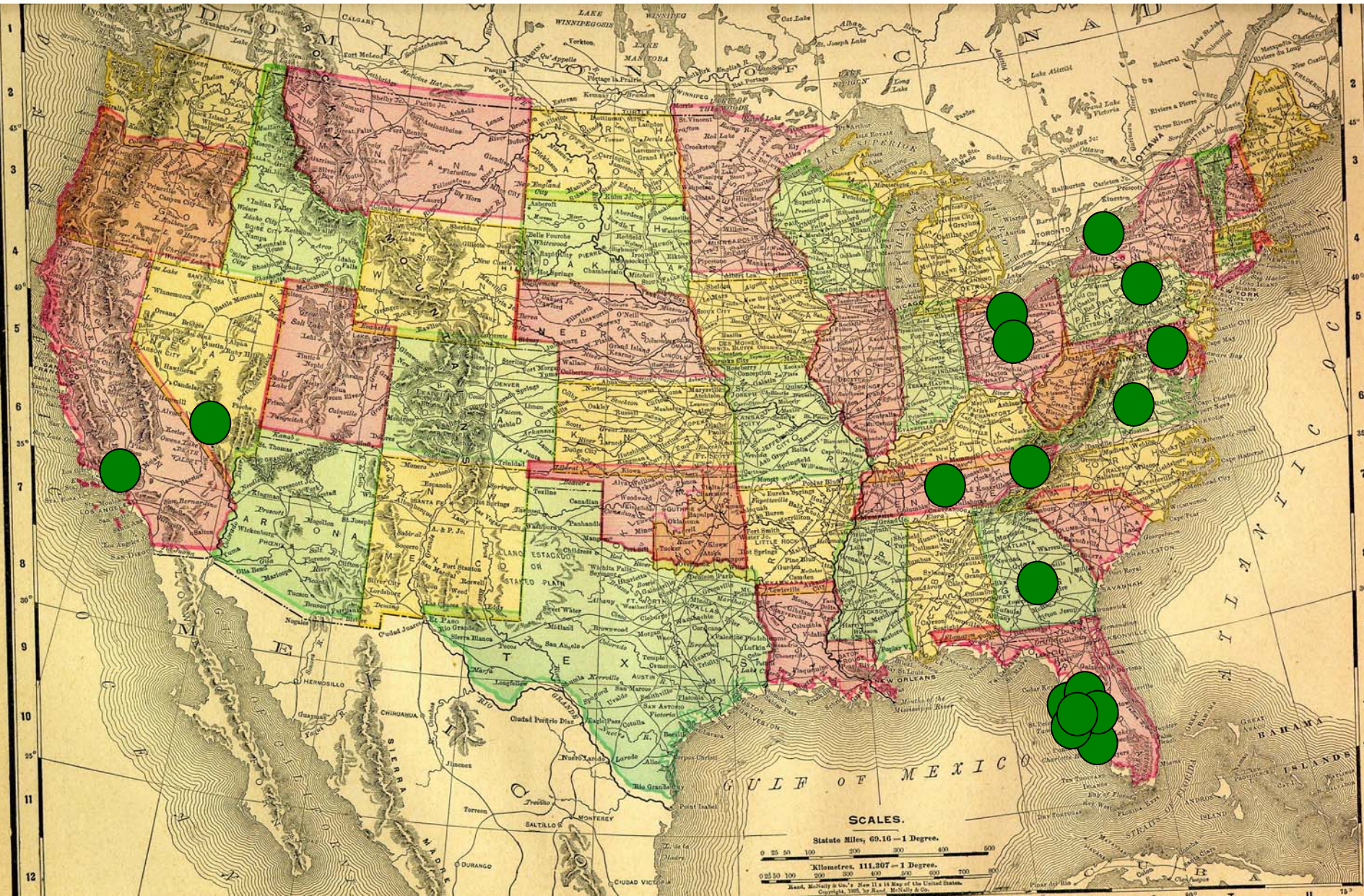


- Class of 2006
 - 2 in academics
 - 1 in EM cardiology fellowship
 - 3 in community EM
- Class of 2007
 - 1 in Sports Medicine fellowship
 - 5 in community EM
 - 1 started an international journal (JETS)
- Class of 2008
 - 2 in academics
 - 4 in community EM

- There is no limit to your potential!



Where are they now?





- We promise...
 - You will graduate as excellent clinicians
 - You will have a solid academic base
 - You will pass your boards
 - You will be able to get a job anywhere in the country
 - We will always be fully accredited!



- Agenda today:
 - Tour
 - Interviews
 - Grand Rounds (Wed)
 - Lunch
 - Finish approx. 1330
 - Feedback



