

# Laboratory of Molecular Biology

**Bruce A. Citron, Ph.D.**

**David Eve, Ph.D.**

**Steve Dennis**

**Bay Pines VA Healthcare System**

**& Department of Molecular Medicine**

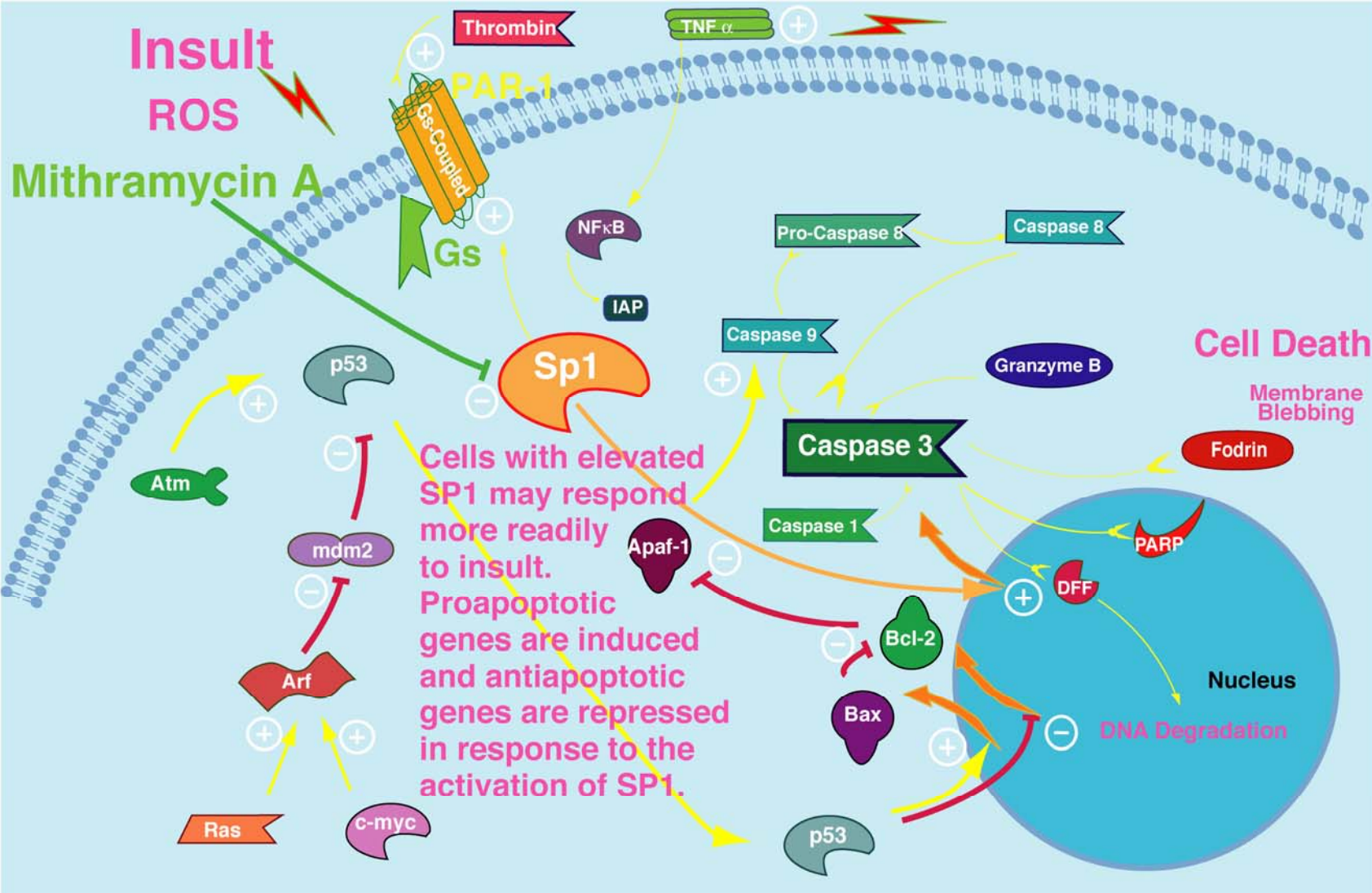
**University of South Florida College of Medicine**



# Bay Pines VA Healthcare System



# SP1 Pathway



# *Wobbler* mice suffer upper spinal motor loss



*wt/?*



*wr/wr*

**Genotype**

# Quantitative Neuromuscular Loss

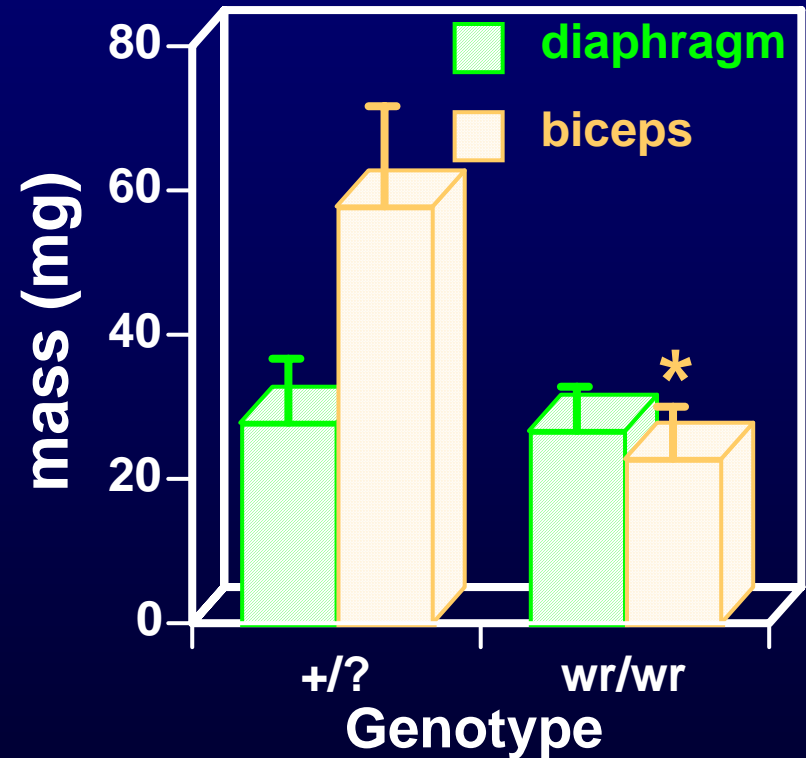
## Rotarod

Genotype	Time on dowel (s)
----------	-------------------

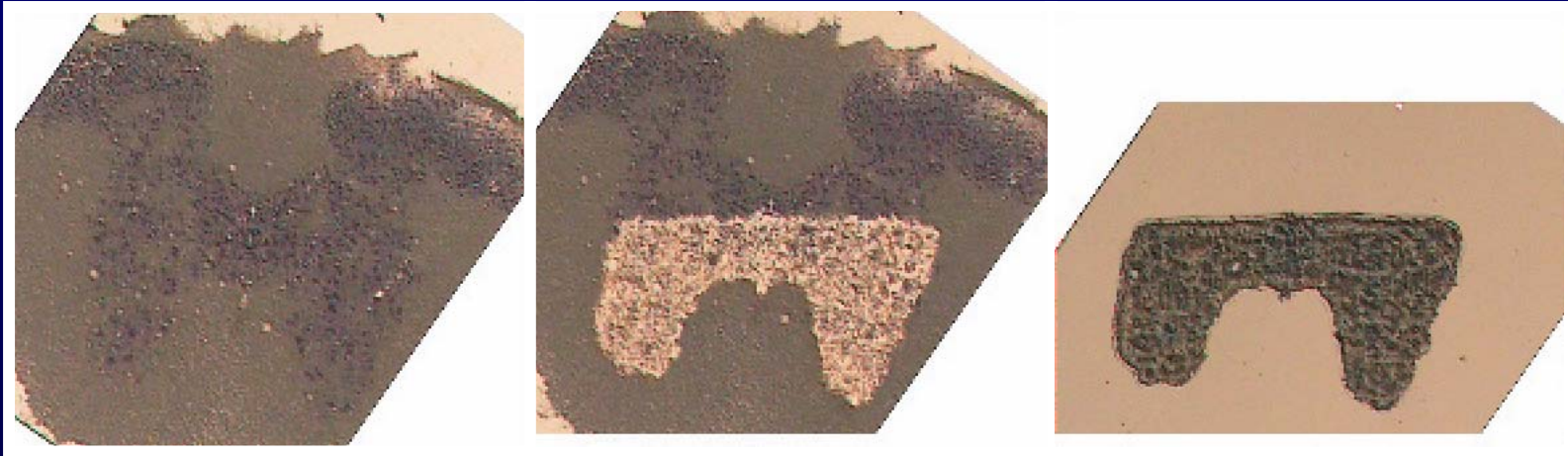
<i>wt/?</i>	166
-------------	-----

<i>wr/wr</i>	13
--------------	----

## Muscle Mass



# Laser Capture Microdissection

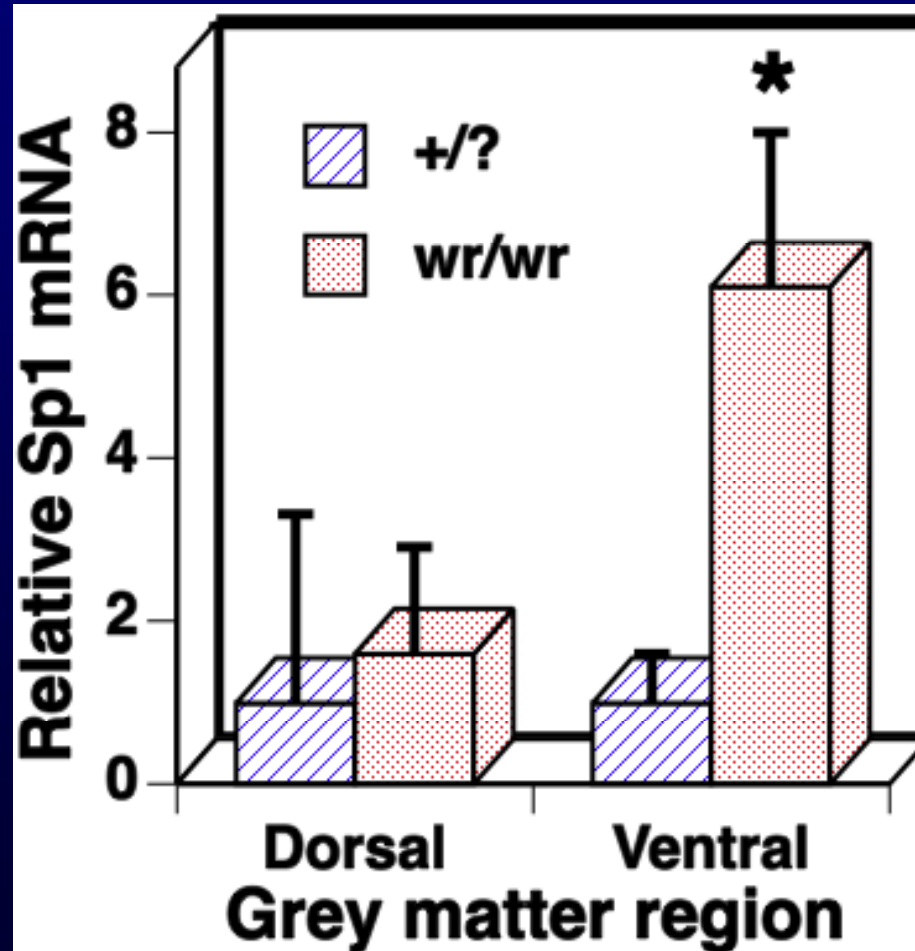


**Intact**

**Remainder**

**Capture**

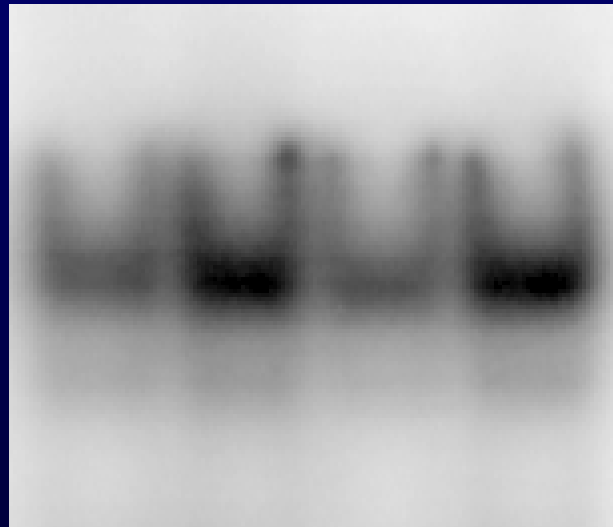
# Sp1 in wobbler



# Activated Sp1

NSC34 cells ( $\mu\text{g}$  extract)

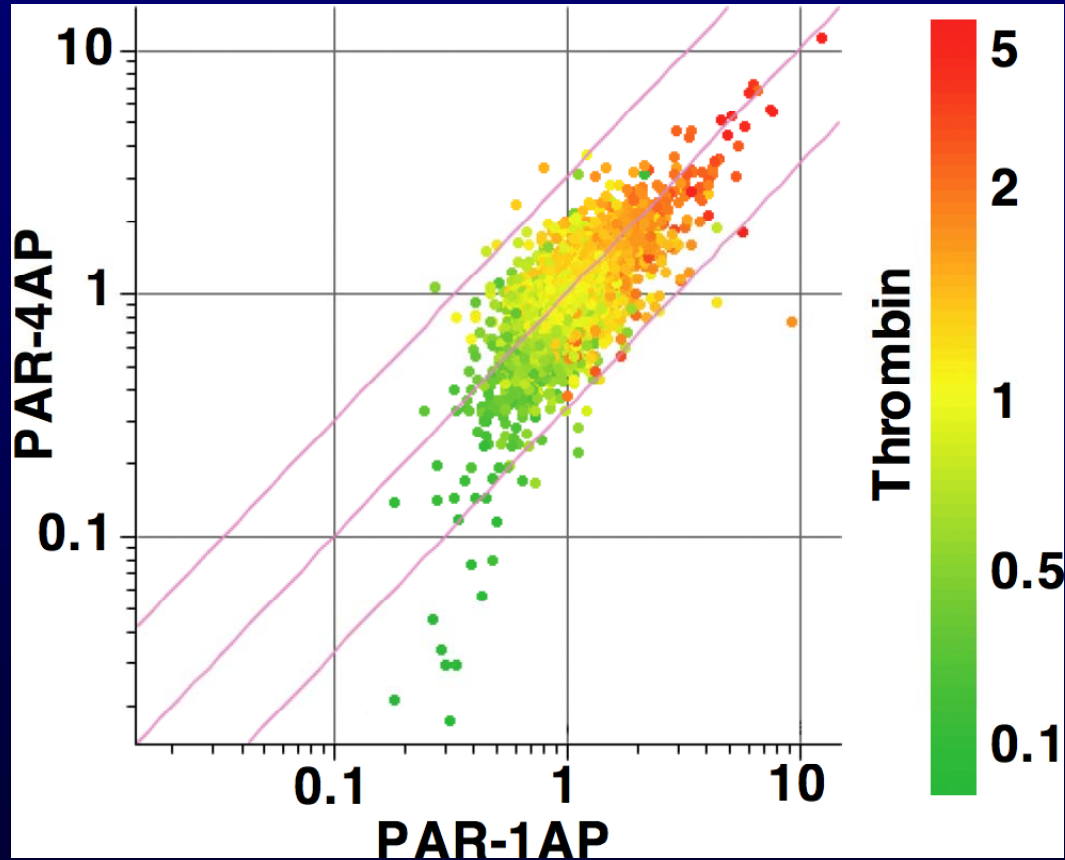
cont	TNF $\alpha$	TH	TH
10	10	5	10 $\mu\text{g}$



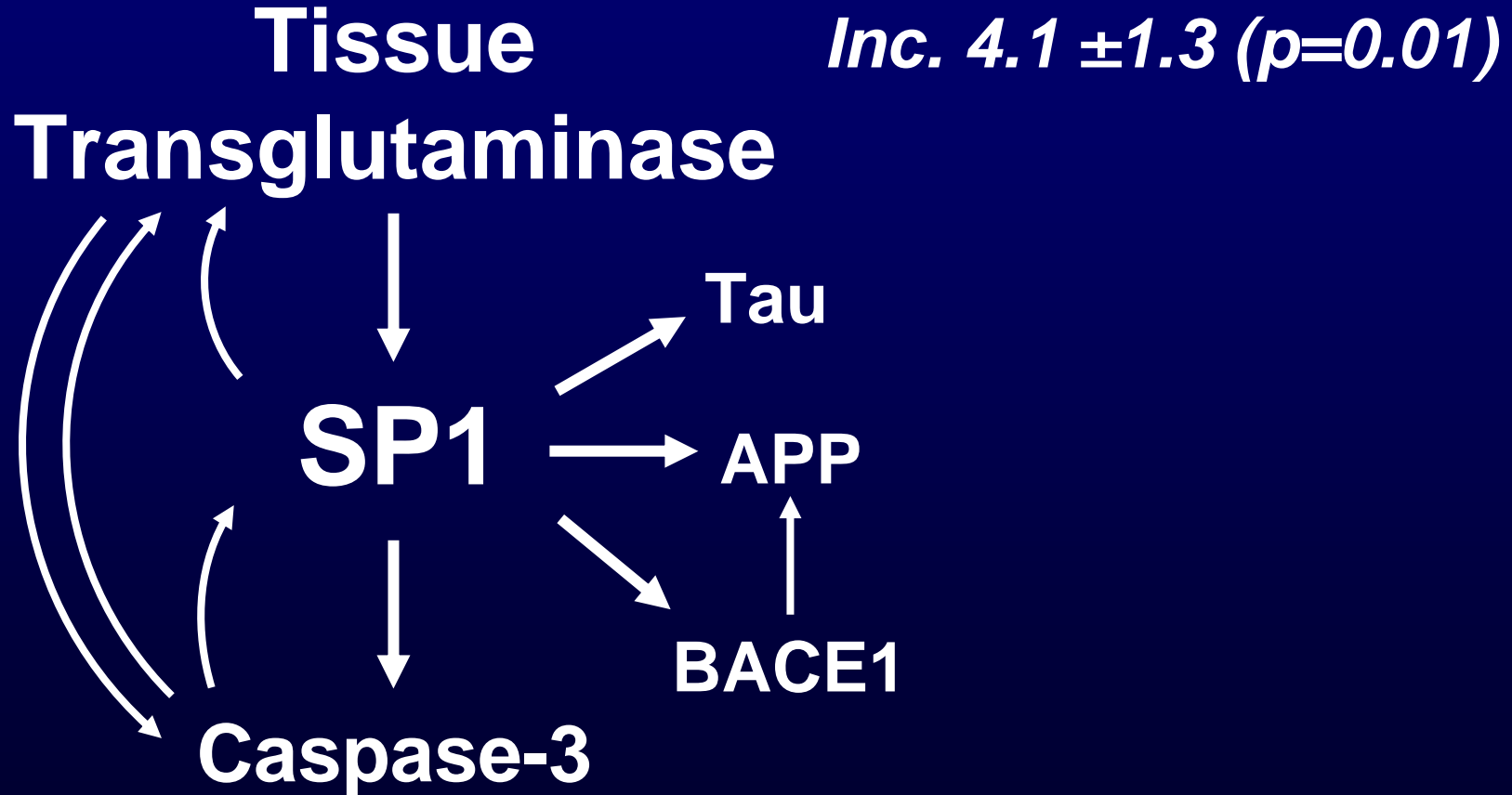
768 1292 801 1287

Relative intensity

# Brain slice array



# tTG in the Human AD Brain



# Human AD brain

