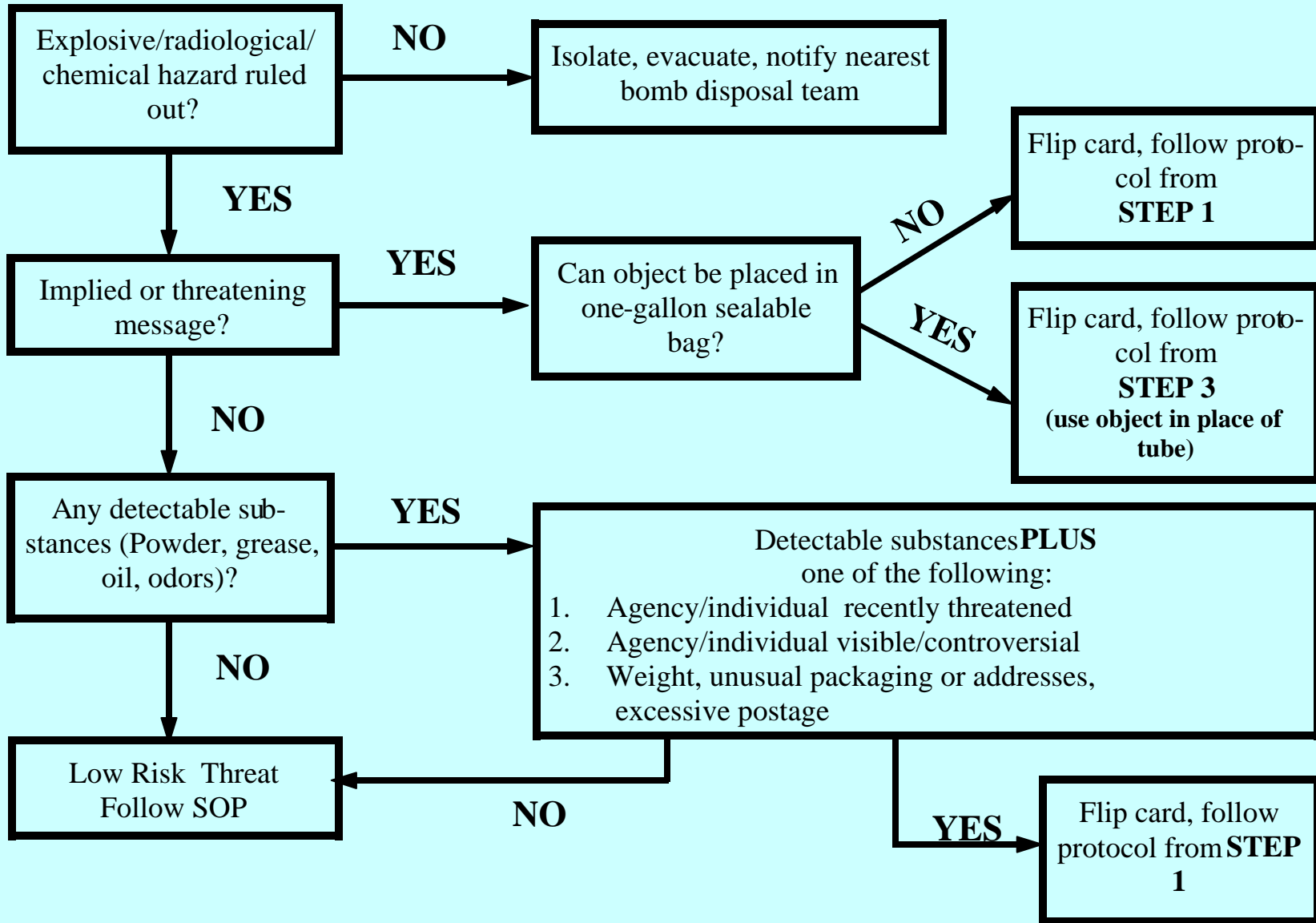


# Biological Agent Threat Assessment



# Protocol for Biological Agent Collection, Package, and Transport

**STEP 1  
(BEFORE ENTERING SCENE)**

Remove sterile, rayon swab tube from outer packaging, number/label tubes.

**STEP 2:  
(HOT/EXCLUSION ZONE)**

**DRY SAMPLING (PREFERRED METHOD)**

Rotate swab over 3" x 3" area of sample to be collected

Place swab back into tube and tightly close cap

AND/OR

**WET SAMPLING**  
Insert swab into pink tube to wet with saline.

Rotate saline-dampened swab over 3" x 3" area of sample to be collected

Place swab back into tube and tightly close cap

**DRY SAMPLING (larger quantity)**

Use plastic spoon to scoop powder available

Place powder into 50mL plastic tube and tightly close cap

**STEP 3:  
(HOT/EXCLUSION ZONE)**

Place closed tube(s) in separate, gallon-sized sealable bags; Seal

\*Spray outside of bag with 10% bleach solution, leave on bag

Place each decontaminated bag inside a second, separate bag; Seal

Spray outside of second bag with 10% bleach solution (leave on bag)

**STEP 4:  
(WARM/SUPPORT ZONE)**

Transfer double-bagged sample into clean, one gallon paint can

Spray outside of can with 10% bleach solution; air dry 15-20 min.

Secure can in transport vehicle (DOH or Law Enforcement)

Transport to Florida DOH Lab

\*10% bleach solution should be made fresh daily or on-scene.

Developed by the USF Center for Biological Defense in conjunction with the Florida Department of Law Enforcement, the Tampa Police Department Bomb Squad, and the Florida Department of Health.

Please contact Amanda Shaw at [ashaw@health.usf.edu](mailto:ashaw@health.usf.edu) for changes, updates or revisions.

