

---

# **USF HEALTH**

## **HSC/COM Facility Improvements Project Update**

### **(update to MS II Class)**

**Presented by:**  
**Stan Douglas, Director**  
**HSC Facilities Management**

---

---

# **USF – Health Facilities Planning and Construction Health Science Center Facility Improvements**

## **Presentation Outline**

- **Project Background/History**
- **Scope of Work and Areas of Focus**
- **Project Budget**
- **Design Update - Progress To Date**
- **Construction Schedule**
- **Interior Finish Material Colors**
- **Way-Finding Proposed Conceptual Improvements**

---

# **USF – Health Facilities Planning and Construction Health Science Center Facility Improvements**

## **Project Background**

**This facilities improvement effort involves several renovation projects taken from a developed HSC Mini-Master Plan (MMP) which focuses on improving, upgrading, and expanding existing spaces in the MDC, MDL, MDN, and MDA complex.**

**The MMP provides a recommended work list of projects which supports pedestrian way-finding & signage improvements and considers facility spatial expansions as health science student enrollment increases.**

**Eleven (11) proposed projects are identified in the MMP totaling cost estimates of over multi-million dollar amounts.**

**USF Health/COM would execute these projects as funding became available**

---

# **USF – Health Facilities Planning and Construction Health Science Center Facility Improvements**

## **Project Funding History/Summary**

- **Gift from LHV \$XM (figure not posted)**
- **State Matching Funds**
- **Additional \$\$s from USF (Reprogrammed)**
- **Carry-Forward Funding Identified**

---

# **USF – Health Facilities Planning and Construction**

## **Health Science Campus Facility Improvements**

### **Budget Created**

- **\$XXX (figure not posted due to contract rules and regulations)**

### **Focus: HSC General Facility Enhancements**

- **Increasing Learning Space Capacity**
- **Beautifying HSC Campus District**

---

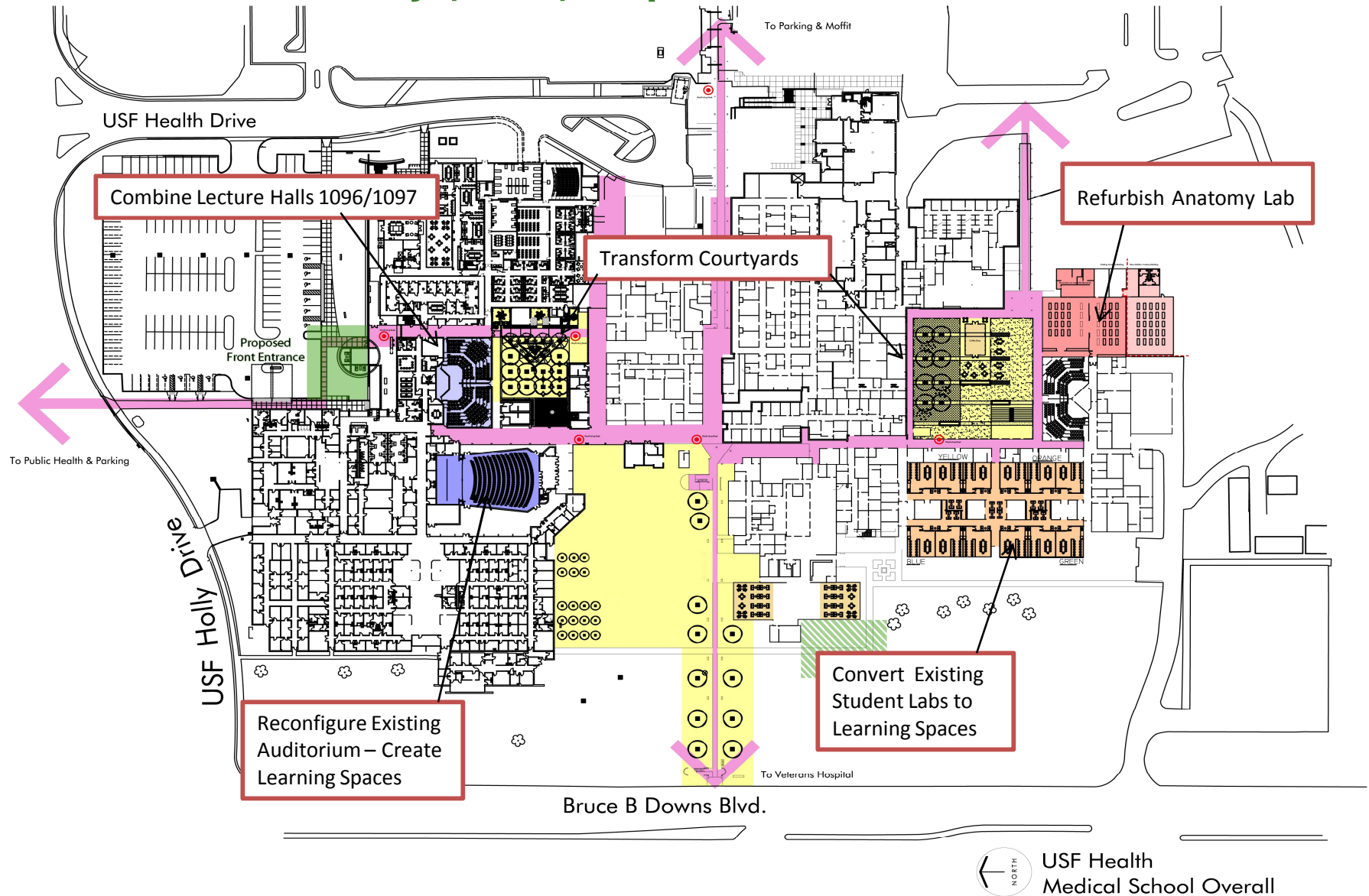
# USF – Health Facilities Planning and Construction

## Health Science Center Facility Improvements

**Project Scope:** This Facilities Improvement Package effort will focus on several areas of the HSC campus. These areas are as follows:

- Reconfigure Existing Auditorium – Create Learning Spaces  
(Incorporate State-of-the-Art A/V Package)
- Combine Existing 1096/1097 Lecture Halls (increase seating capacity)  
(some A/V Improvement)
- Convert Existing Student Labs to Small Group Learning Spaces  
(Incorporate State-of-the-Art A/V & IT Technology)
- Improve Anatomy Lab Facilities (Renovation/Refurbish)  
(Incorporate State-of-the- Art AV/IT Package)
- Improve HSC Primary District Way-Finding & Courtyards (& beautify these areas)
- Identify new formal Entrance for USF Health/COM (Front Door)

# USF – HSC Facility (COM) Improvements



8/24/2010

## Overall HSC Site Improvement Plan

---

# **USF – Health Facilities Planning and Construction HSC Facility Improvements**

## **Project Development Process**

- **Design Team & Selection Process**
- **Design Pkg Developed w/ User Group Input**
- **Actual Project Scope Detailed**



---

# **USF – Health Facilities Planning and Construction**

## **Health Science Center Facility Improvements**

### **Programmatic Needs Input (Typical Learning Space)**

#### **Functional Capabilities:**

- **Ability for Instructor interaction w/ students, aisles for Instructor access**
- **Team Based Learning Environment**
- **Computer Based Learning**
- **Capacity for Audience Response**
- **Soundproof Multi-Function Flexible Walls**
- **Individual Study Spaces**
- **Group Study Spaces**
- **Group Instruction Spaces**
- **Ability to deliver computerized exams**
- **Natural Lighting in Learning Spaces**

---

## **USF – Health Facilities Planning and Construction Health Science Center Facility Improvements**

### **Learning Spaces Programmatic Needs**

#### **IT/AV Equipment or Capabilities:**

- **Wi-Fi for every student to use @ once**
- **Desk/Learning Space Computer Plug-in for each Student**
- **Video Conference/Streaming**
- **Ability to give computerized exams**
- **Audio Response Capability (ARS)**
- **Lecture Video Recording Ability**

**(Typical for all spaces and maybe courtyards)**

---

## **USF – Health Facilities Planning and Construction Health Science Center Facility Improvements**

### **Anatomy Lab Programmatic Needs**

#### **Capacities:**

- **Ability to accommodate 300 students**
- **Groups of 4 students for table**

#### **Function Capability:**

- **Exam Space (practical exam set-up)**
- **Ability to walk around desk**
- **Cadavers/Pro-sections**
- **Electronic/Digital Learning station – each group/table should have computer image delivery capability**

---

# **USF – Health Facilities Planning and Construction**

## **Health Science Center Facility Improvements**

### **Programmatic Needs**

- **HSC Way-Finding**
- **Path ways/Covered Sidewalks Beautification**
- **Courtyard Improvements (Beautify/Useable)**
- **HSC/COM Main Entry (Front Door)**

---

## USF – Health Facilities Planning and Construction

### Health Science Center Facility Improvements





G R E S H A M  
S M I T H   A N D  
P A R T N E R S

Property of Gresham, Smith and Partners



# **University of South Florida**

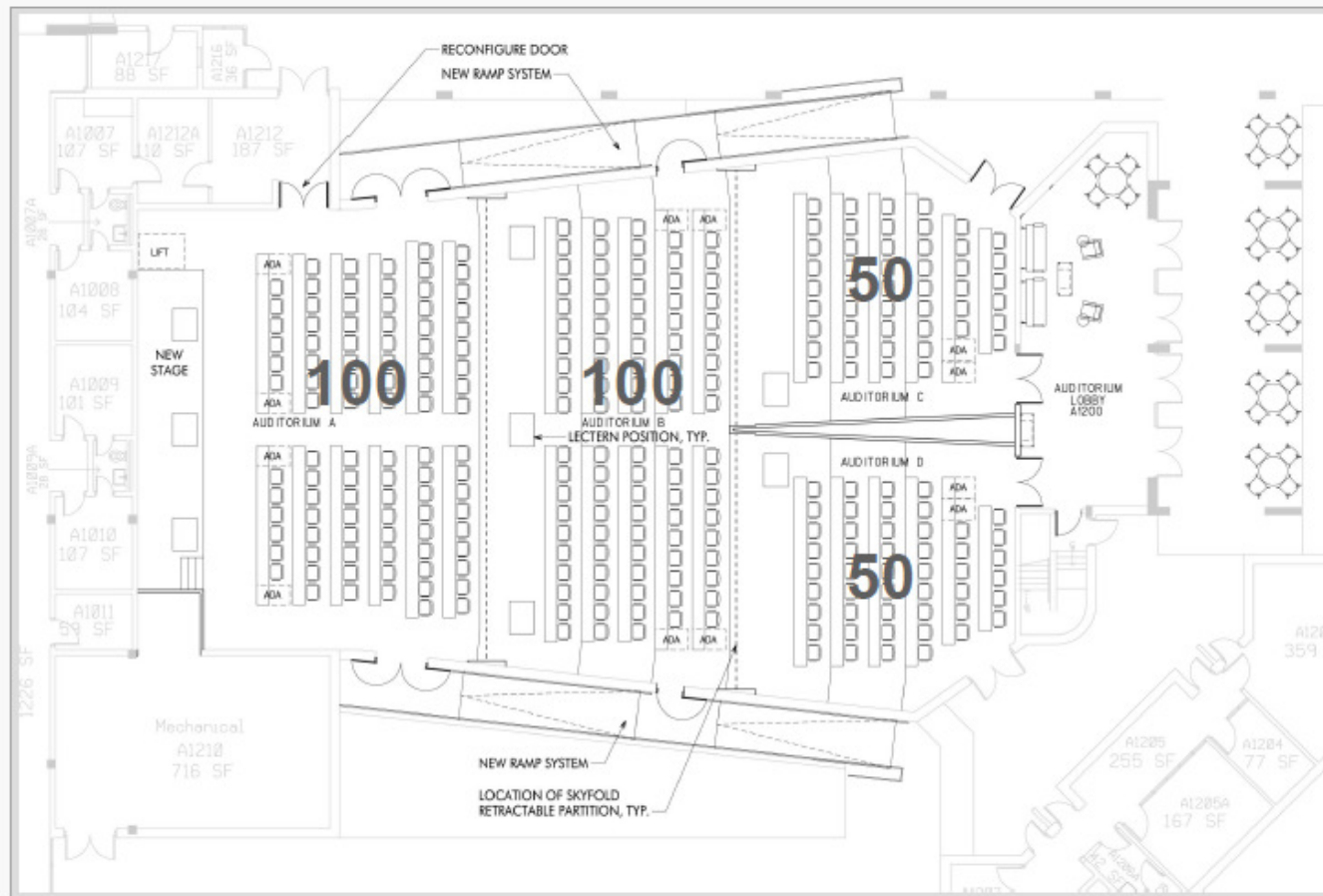
## **College of Medicine Facility Improvements**

**Gresham, Smith and Partners**

# USF – Health Facilities Planning and Construction

## Health Science Center Facility Improvements

### Auditorium Plan



#### Basis of Design:

-300 seats total

Auditorium A: 100 seats  
Auditorium B: 100 seats  
Auditorium C: 50 seats  
Auditorium D: 50 seats

#### Scope:

- Remove existing stage
- Convert sloped floor to stepped
- Flexible lectern positions
- New fixed counter and movable seats
- Retractable partitions
- Full AV capability and upgraded finishes



GRESHAM  
SMITH AND  
PARTNERS  
Property of Gresham, Smith and Partners



University of South Florida  
USF 517: College of Medicine Improvements  
Schematic Design Submission  
May 7, 2010

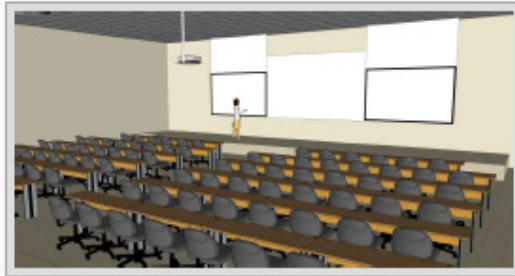




# USF – Health Facilities Planning and Construction

## Health Science Center Facility Improvements

### Auditorium Views



Auditorium A, Front View



Auditorium B, Back View



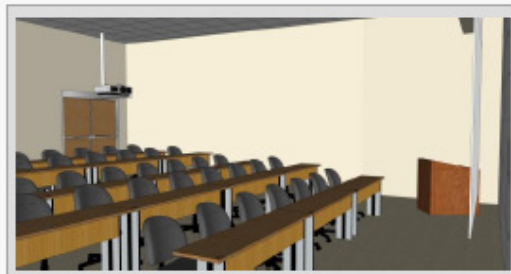
Auditorium A, Back View



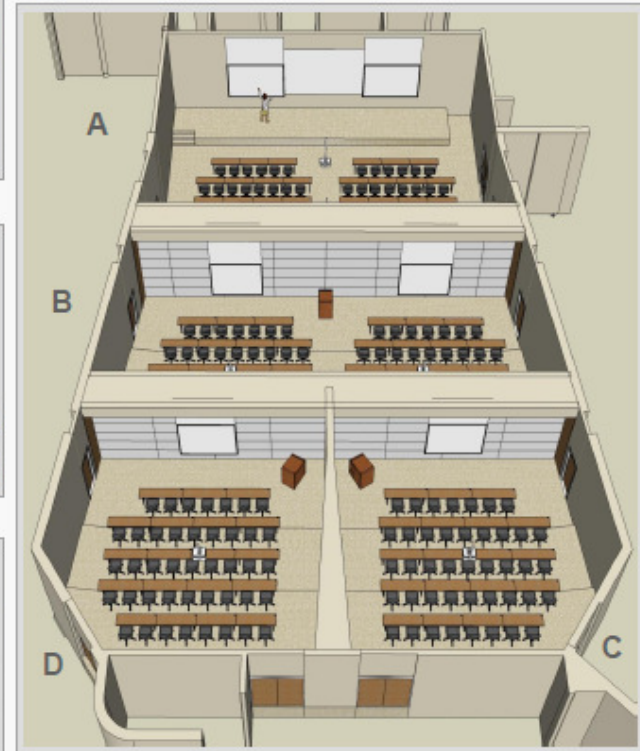
Auditorium D, Front View



Open Auditorium



Auditorium C, Back View



Auditorium with partitions in position



GRESHAM  
SMITH AND  
PARTNERS  
Property of Gresham, Smith and Partners



University of South Florida  
USF 517: College of Medicine Improvements  
Schematic Design Submission  
May 7, 2010



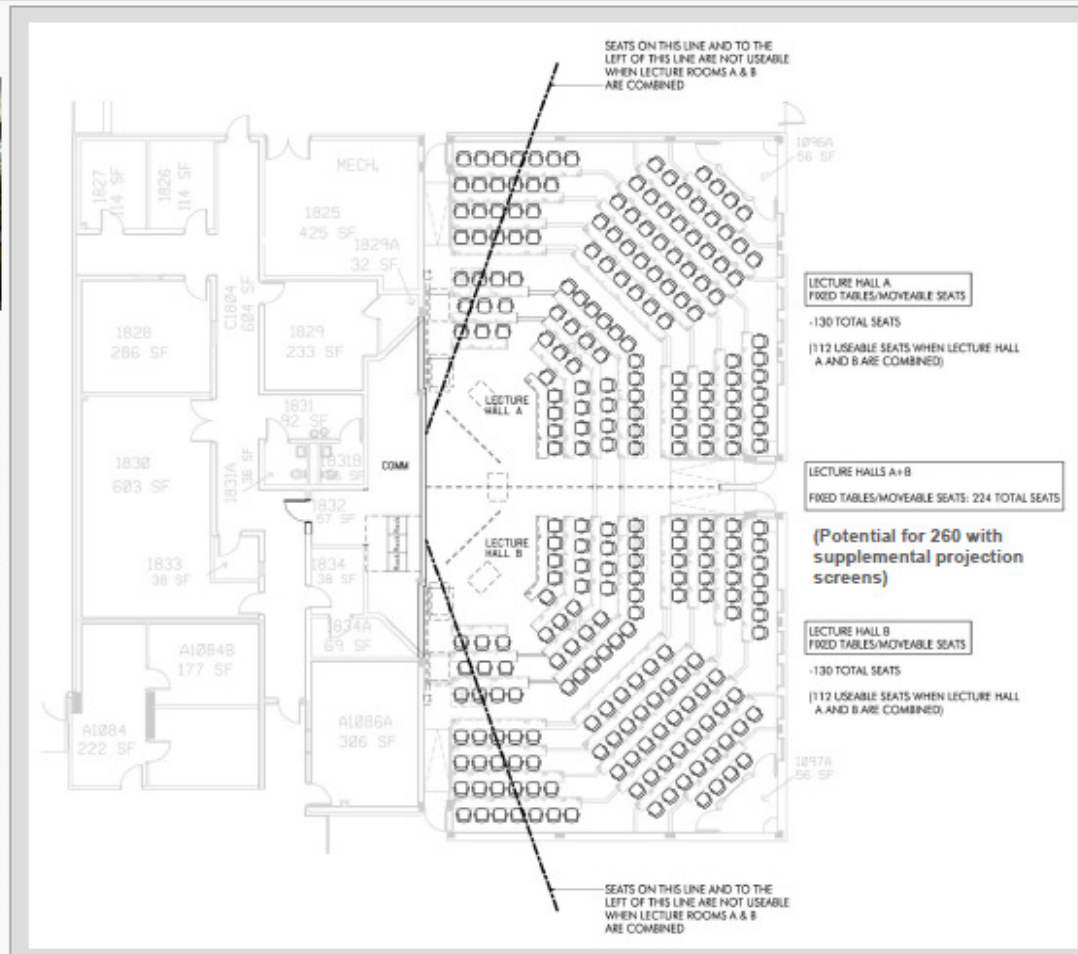
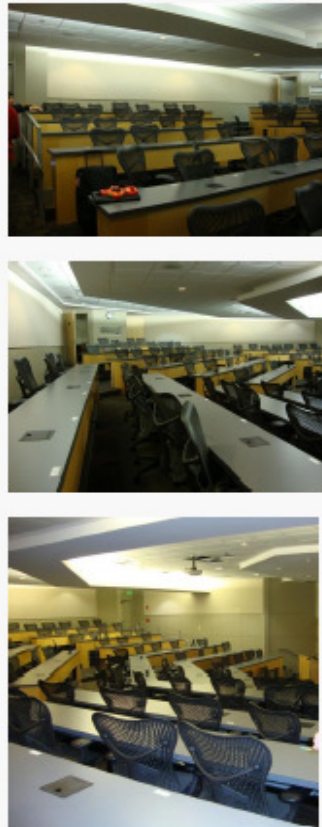


# USF – Health Facilities Planning and Construction

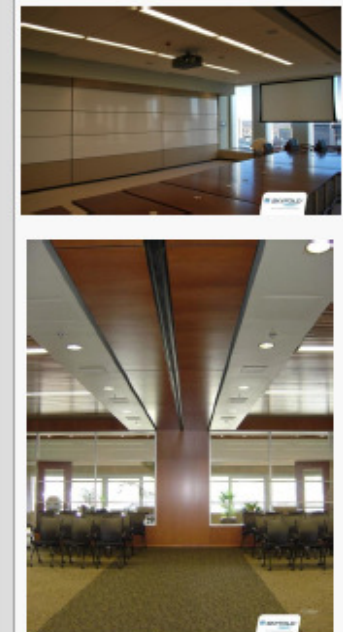
## Health Science Center Facility Improvements

### Lecture Hall Plan

Existing Lecture Halls



Typical Skyfold installations



GRESHAM  
SMITH AND  
PARTNERS  
Property of Gresham, Smith and Partners



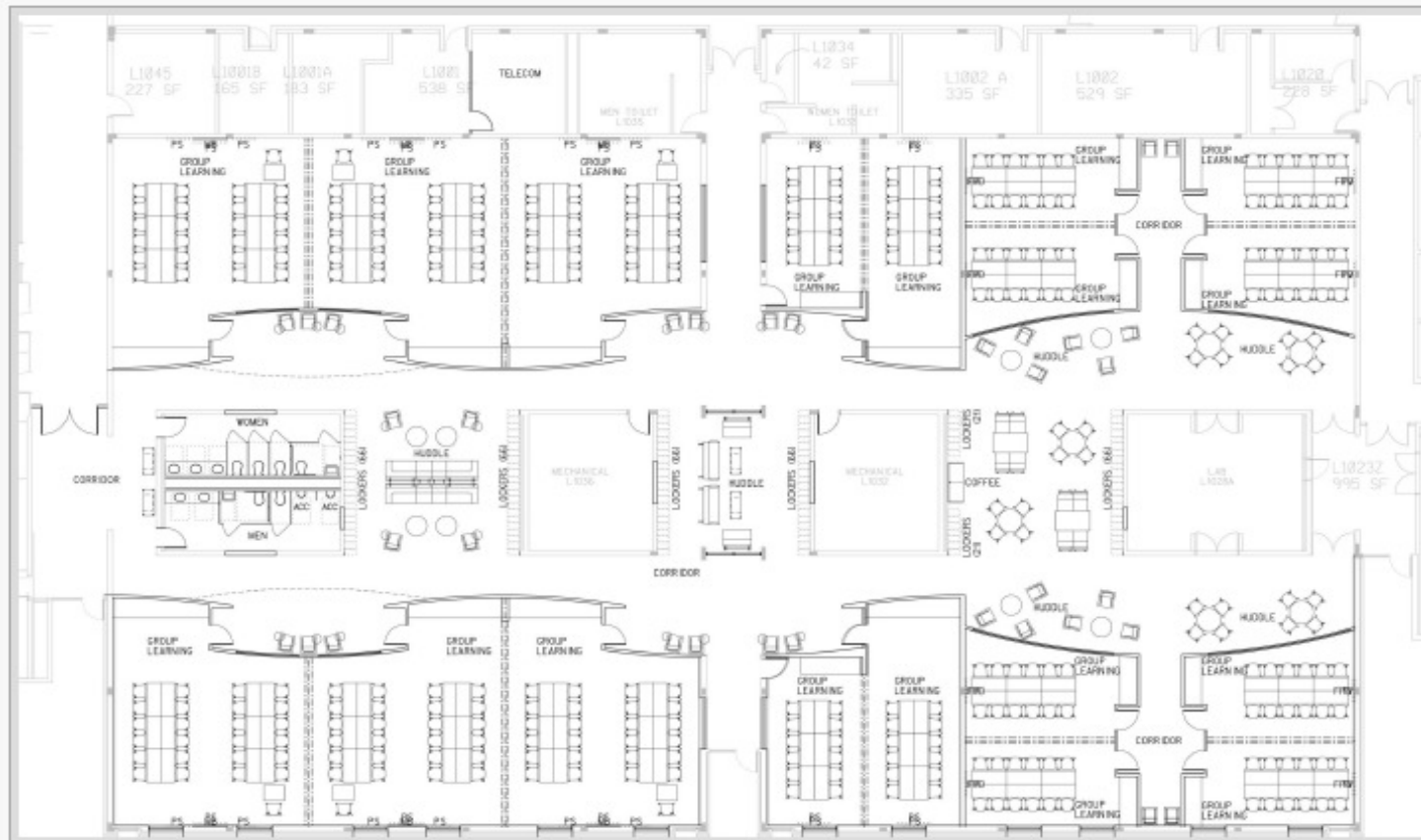
University of South Florida  
USF 517: College of Medicine Improvements  
Schematic Design Submission  
May 7, 2010



# USF – Health Facilities Planning and Construction

## Health Science Center Facility Improvements

### Group Learning Plan



#### Scope:

- Demolition of existing labs
- New dividable and flexible student areas
- New toilets
- Huddle spaces
- Lockers
- New windows for daylight
- Glass panels to teaching rooms
- New finishes throughout



GRESHAM  
SMITH AND  
PARTNERS  
Property of Gresham, Smith and Partners



University of South Florida  
USF 517: College of Medicine Improvements  
Schematic Design Submission  
May 7, 2010



# USF – Health Facilities Planning and Construction

## Health Science Center Facility Improvements



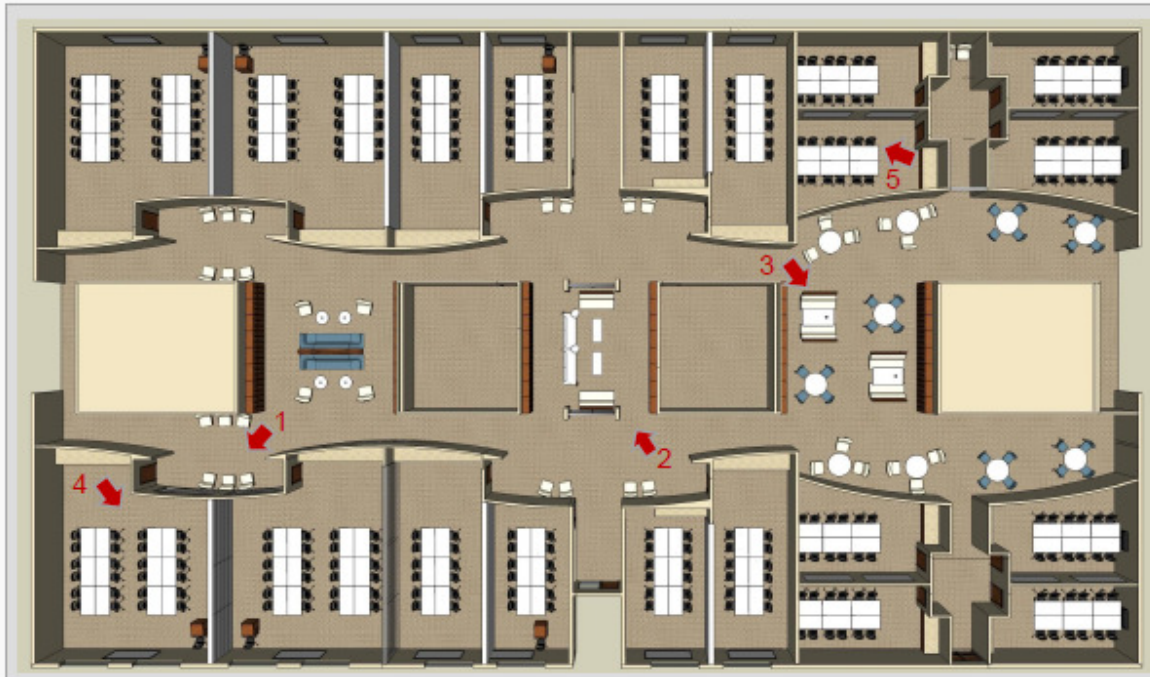
1. Glazing to teaching rooms



2. Central huddle space



3. Huddle space and lockers



4. Typical room



5. Twelve person room



GRESHAM  
SMITH AND  
PARTNERS  
Property of Gresham, Smith and Partners



University of South Florida  
USF 517: College of Medicine Improvements  
Schematic Design Submission  
May 7, 2010



---

## **USF – Health Facilities Planning and Construction**

### **Health Science Center Facility Improvements**

#### **Learning Spaces Summary:**

<b>*Student Lab Conversion-</b>		<b>6 (24 pers); 2 (72 pers)</b> <b>6 (24 pers); 12 (12 pers)</b>
<b>*Lecture Halls</b>	<b>-</b>	<b>2 (130 pers); 1 (260 pers)</b>
<b>*Auditorium</b>	<b>-</b>	<b>2 (100 per); 2 (50 pers);</b> <b>1 (300 pers)</b>
<b>Total</b>	<b>-</b>	<b>~ 32 new spaces</b>

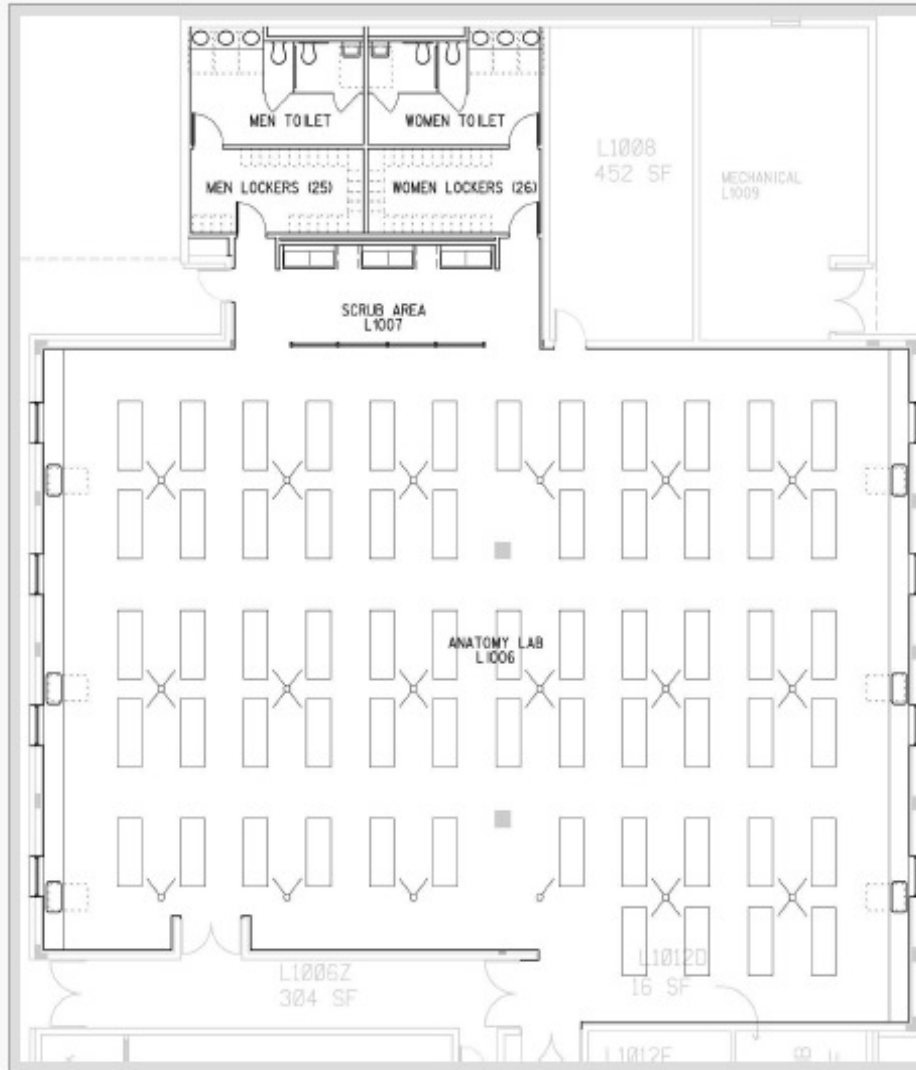


# USF – Health Facilities Planning and Construction

## Health Science Center Facility Improvements

### Anatomy Lab Plan

**Option A:  
Anatomy Lab Plan**

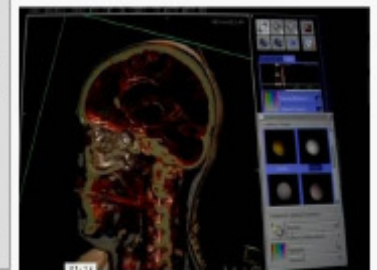


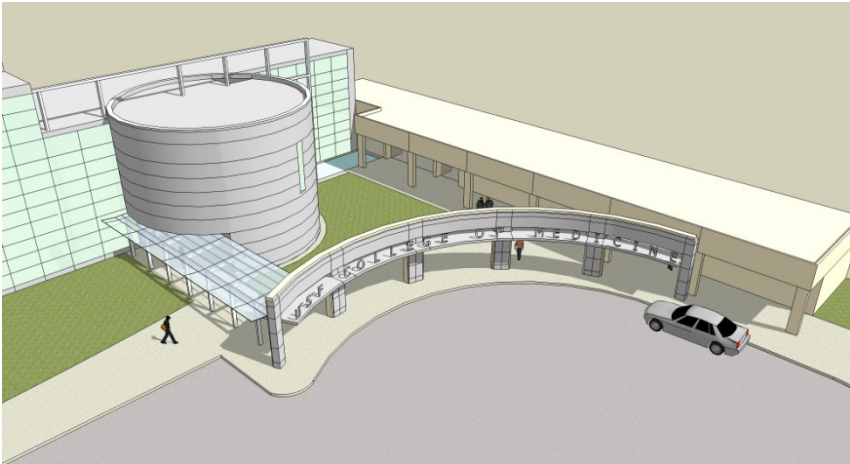
#### Scope:



Suspended arm with AV  
& computer station

- 62 tables
- New windows for day lighting
- Scrub area visible to lab
- New toilet/locker configuration
- Complete AV capability





Entry Canopy Design

Conceptual Rendering – Option Four



Property of Gresham, Smith and Partners

## College of Medicine

Auditorium

Lecture Hall

Group Learning

Exterior



# USF – Health Facilities Planning and Construction

## Health Science Center Facility Improvements

### North Courtyard Plan

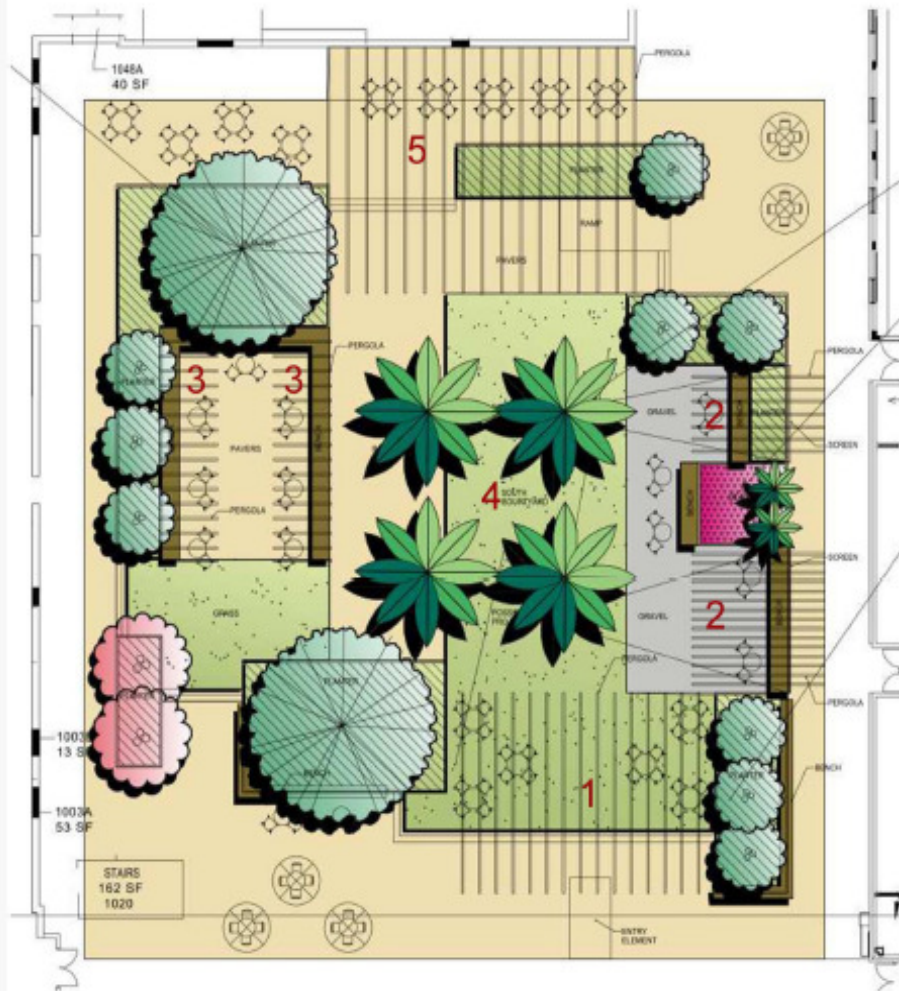




# USF – Health Facilities Planning and Construction

## Health Science Center Facility Improvements

### South Courtyard Plan



1, 5



2



3



4



#### Concept Images:

-Hardscape and paving

-Softscape options

-Water feature

-Shading

-Seating



---

# USF – Health Facilities Planning and Construction

## HSC Facility Improvements – *Tentative* Timetable

Schedule: This project will be executed in a phased construction sequence as noted below:

### Auditorium Renovation (Phase I)

Planned Start Range: - Sept 2010 - Dec 2010

Scheduled Completion: - July 2011

### Group Learning (Phase II)

Planned Start: - Oct 2010

Scheduled Completion - July 2011

### Lecture Halls (Phase III)

Possible Start: May 10, 2011.....only if area can be completed by July/Aug 2011 (TBD by Project Team).

Alternate Start Date: - April 10, 2012

Scheduled Completion - July 2012

### Anatomy Lab (Phase IV)

Planned Start: - April 30, 2011

Scheduled Completion - Aug 30, 2011

Courtyards, Way-finding, & Main Entrance work will occur during or between the phases of this project (dates TBD)

---